

HENDON LANE, LONDON, N3
£1,570,000 FREEHOLD

A SPACIOUS, WELL PRESENTED, DETACHED HOUSE, OFFERING CIRCA 3500 SQ.FT OF LIVING SPACE.

Finchley | 020 8349 3388 | finchley@winkworth.co.uk



for every step...

winkworth.co.uk



Winkworth

DESCRIPTION:

Set in a prestigious location, we are pleased to offer this spacious six/seven double bedroom detached family home, ideally located for public transport, local amenities, shops and restaurants of Finchley Central, as well as a short walk to Kinloss Synagogue, Chalgrove, Hasmonean, Akiva and St. Theresa Primary Schools. The property offers extensive living space over three floors, and comprises of a spacious hallway entrance, two front reception rooms (both with en-suites that could be used as bedrooms), spacious through-lounge which is currently being occupied as a living and dining area, eat-in kitchen with access to a South facing rear garden, separate utility area and downstairs WC. The first floor comprises of four double bedrooms, (two of which have en-suites with a dressing area to the primary bedroom) and family bathroom. The second floor has two double bedrooms (one with-en suite). Further benefits include, air conditioning throughout the property, double garage and ample parking. Offered on a chain free basis, an internal viewing is highly recommended!

AT A GLANCE

- Double fronted detached house
- Four / Five reception rooms
- Six bedrooms
- Six bathrooms / Shower rooms
- South Facing rear garden over two levels
- Parking
- Double Garage



Winkworth



Winkworth



Winkworth



Winkworth



Winkworth



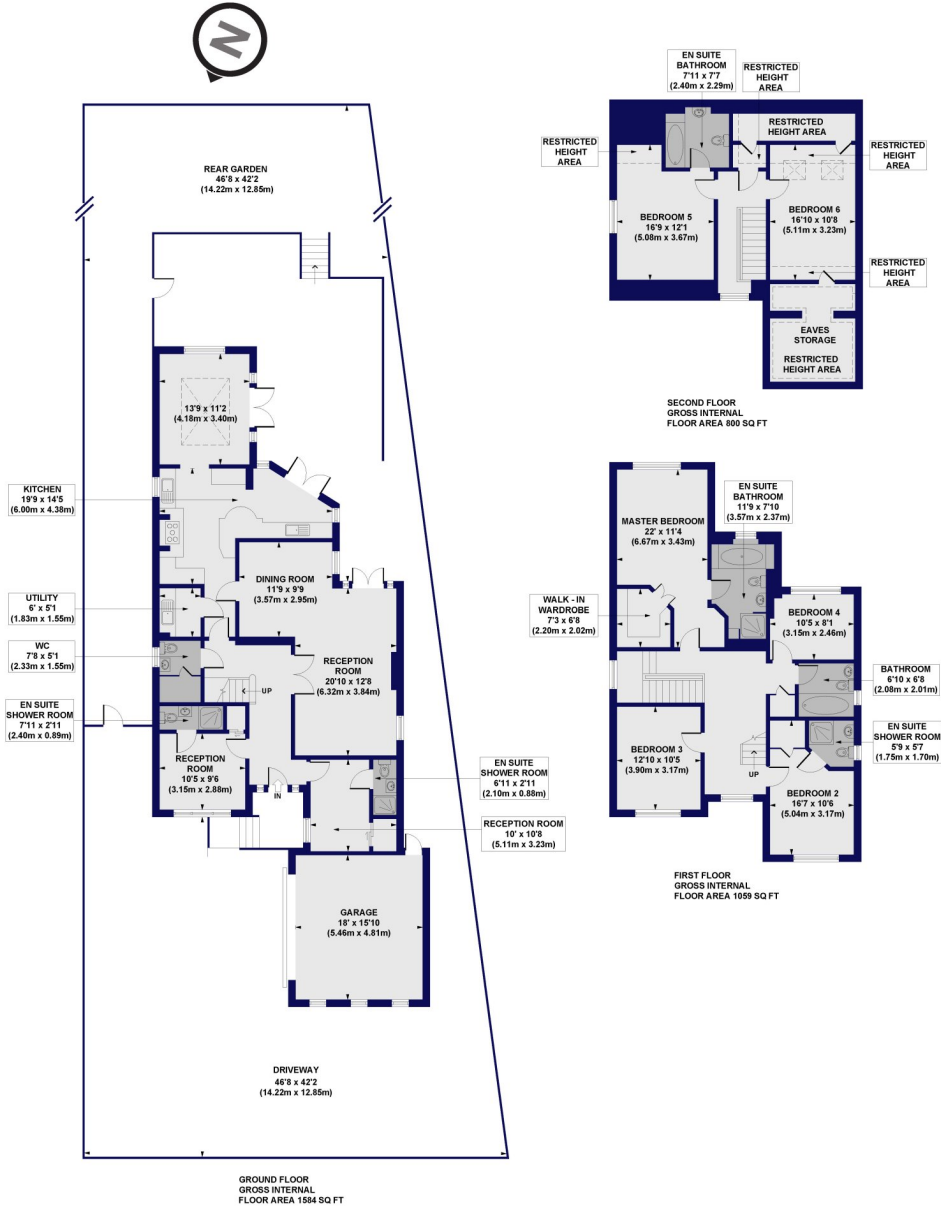
Winkworth



Winkworth

Hendon Lane, N3

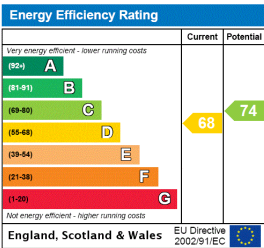
Approx. Gross Internal Floor Area 3443 sq. ft / 319.85 sq. m (Including Restricted Height Area, Garage & Eaves Storage)
 Approx. Gross Internal Floor Area 2859 sq. ft / 265.57 sq. m (Excluding Restricted Height Area, Garage & Eaves Storage)



All measurements of walls, doors, windows, fittings and appliances, including their size and location, are shown as standard sizes and do not constitute any warranty or representation by the seller, their agent or CP Creative. Any intending purchaser must satisfy himself by inspection or otherwise as to the correctness of the information contained in these plans. This plan is for illustrative purposes only and should be used as such by any prospective purchasers.

Winkworth

This floorplan is for illustration purposes only and is not to scale. The position and size of doors, windows, appliances and other features are approximate.



Tenure: Freehold

Council Tax Band: G

Where no figures are shown, we have been unable to ascertain the information. All figures that are shown were correct at the time of printing.

Finchley | 020 8349 3388 | finchley@winkworth.co.uk



for every step...

winkworth.co.uk

Winkworth wishes to inform prospective buyers and tenants that these particulars are a guide and act as information only. All our details are given in good faith and believed to be correct at the time of printing but they don't form part of an offer or contract. No Winkworth employee has authority to make or give any representation or warranty in relation to this property. All fixtures and fittings, whether fitted or not are deemed removable by the vendor unless stated otherwise and room sizes are measured between internal wall surfaces, including furnishings.