



BRONDESBURY ROAD, QUEENS PARK, LONDON, NW6
£500,000 LEASEHOLD

**A BRIGHT, AIRY AND SPACIOUS TWO DOUBLE BEDROOM,
TWO BATHROOM, TOP FLOOR FLAT LOCATED A SHORT WALK
AWAY FROM QUEENS PARK.**

Kensal Rise & Queens Park | 0208 960 4947 | kensalrise@winkworth.co.uk

Winkworth



LOCATION:

Brondesbury Road is ideally situated between Salusbury Road and Kilburn High Road. Transport links are excellent at Queens Park which has the Underground (Bakerloo) and the London Overground lines. If it's a bite to eat or a quick drink then look no further than the bars, restaurants and GastroPubs on Salusbury Road. For recreation, Queens Park itself is one of the prettiest in London and only a short walk away!





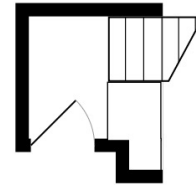
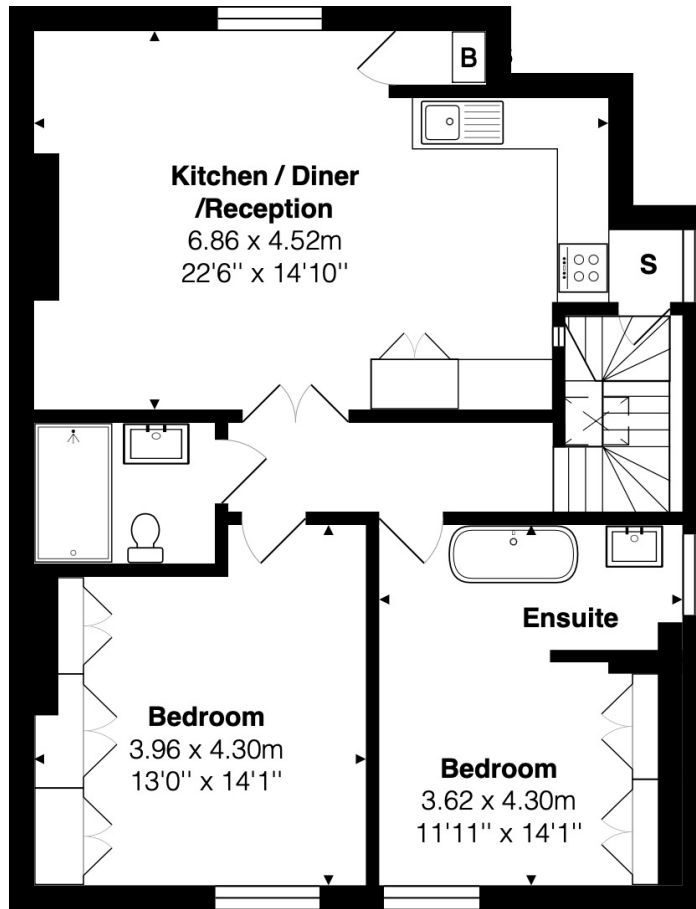
DESCRIPTION:

Spread across the top floor of this well maintained period building, is this wonderful converted flat with contemporary designed interior. On entry, the flat comprises of a wide staircase leading you up to a spacious landing, splitting the living space and bedrooms. There are two large double bedrooms, with the main bedroom benefiting built in wardrobes and an open en-suite with freestanding bathtub. The second bedroom is also a spacious double, with built in wardrobes. The reception and dining area is open plan to the kitchen. The kitchen is a contemporary and handle less with integrated appliances. This is a great entertaining space and hub of the flat. The main shower room is a tiled three-piece suite with modern fittings and heated towel rail.

Being a top floor flat with high ceilings throughout, the flat has a sense of openness and is flooded with natural light from all angles.

The property further benefits from being offered with no upper chain. Viewing therefore comes highly recommended.





1st Floor

2nd Floor

Total Area: 78.3 m² ... 842 ft²

All measurements are approximate and for display purposes only

This floorplan is for illustration purposes only and is not to scale. The position and size of doors, windows, appliances and other features are approximate.

Kensal Rise & Queens Park | 0208 960 4947 | kensalrise@winkworth.co.uk

Winkworth

winkworth.co.uk

See things differently

winkworth wishes to inform prospective buyers and tenants that these particulars are a guide and act as information only. All our details are given in good faith and believed to be correct at the time of printing but they don't form part of an offer or contract. No Winkworth employee has authority to make or give any representation or warranty in relation to this property. All fixtures and fittings, whether fitted or not are deemed removable by the vendor unless stated otherwise and room sizes are measured between internal wall surfaces, including furnishings.