



Winkworth
for every step...



Winkworth
for every step...



Winkworth
for every step...

BRAMPTON ROAD, LONDON, NW9
£2,400 PER MONTH PART FURNISHED

LOCATION! LOCATION! LOCATION! KINGSBURY THREE BEDROOM HOUSE

Kingsbury | 020 8204 0000 | kingsbury@winkworth.co.uk

Winkworth

for every step...

winkworth.co.uk



- THREE BEDROOMS
- MODERN KITCHEN
- TWO SHOWER ROOMS
- OFF STREET PARKING
- WHITE GOODS
- GARDEN
- PART FURNISHED
- AVAILABLE NOW
- EPC RATING C
- COUNCIL TAX BAND D APPROX £1924
- 5 WEEKS RENT DEPOSIT



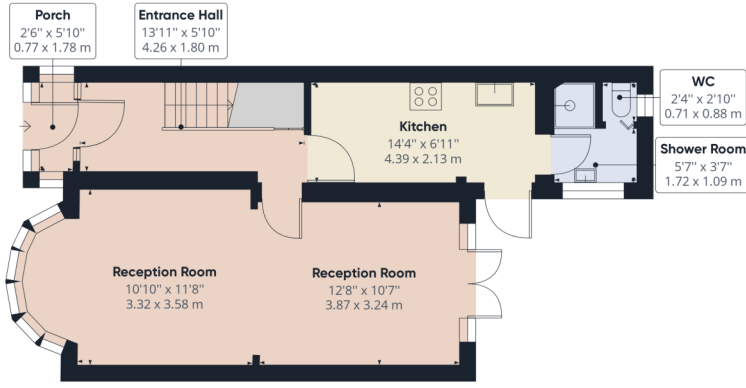
Winkworth

for every step...

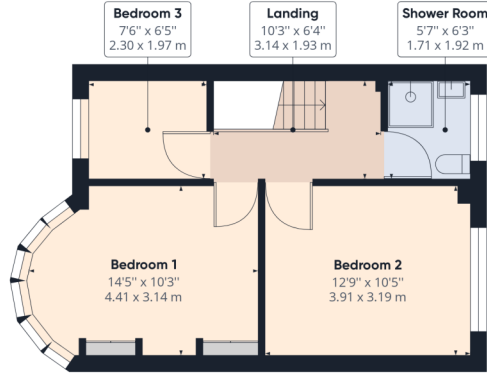


Winkworth

for every step...



Ground Floor



Floor 1

Winkworth

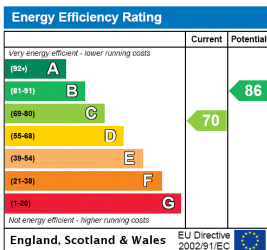
Approximate total area⁽¹⁾
964.05 ft²
89.56 m²

(1) Excluding balconies and terraces

While every attempt has been made to ensure accuracy, all measurements are approximate, not to scale. This floor plan is for illustrative purposes only.

GIRAFFE360

This floorplan is for illustration purposes only and is not to scale. The position and size of doors, windows, appliances and other features are approximate.



Kingsbury | 020 8204 0000 | kingsbury@winkworth.co.uk



for every step...

winkworth.co.uk

Winkworth wishes to inform prospective buyers and tenants that these particulars are a guide and act as information only. All our details are given in good faith and believed to be correct at the time of printing but they don't form part of an offer or contract. No Winkworth employee has authority to make or give any representation or warranty in relation to this property. All fixtures and fittings, whether fitted or not are deemed removable by the vendor unless stated otherwise and room sizes are measured between internal wall surfaces, including furnishings.