



Uxbridge Road, Shepherd's Bush, W12

£425,000 Share of Freehold

A superb one bedroom flat with private garden, on the lower ground floor of an end of terrace Victorian house.

Reception Room | Open Plan Kitchen | Bedroom | Bathroom | Garden | 765 Sq Ft / 71 Sq M | Council Tax Band C | EPC Rating Band C

Winkworth



LOCATION

The property is located on the corner of Uxbridge Road and Becklow Road, moments from The Princess Victoria gastropub. Also close to Askew Road where numerous restaurants, pubs and coffee shops can be found, as well as an array of shops such as The Ginger Pig, Askew Wine and Gail's Bakery. Shepherd's Bush offers not only Westfield London shopping centre, but also an abundance of independent bars, restaurants and an internationally famous music venue, as well as outstanding transport links.

DESCRIPTION

Offered in good order throughout, having been refurbished in recent years, the property offers accommodation comprising entrance hall, shower room, bedroom and extended kitchen/reception room, with French doors leading to a good size, private rear garden.

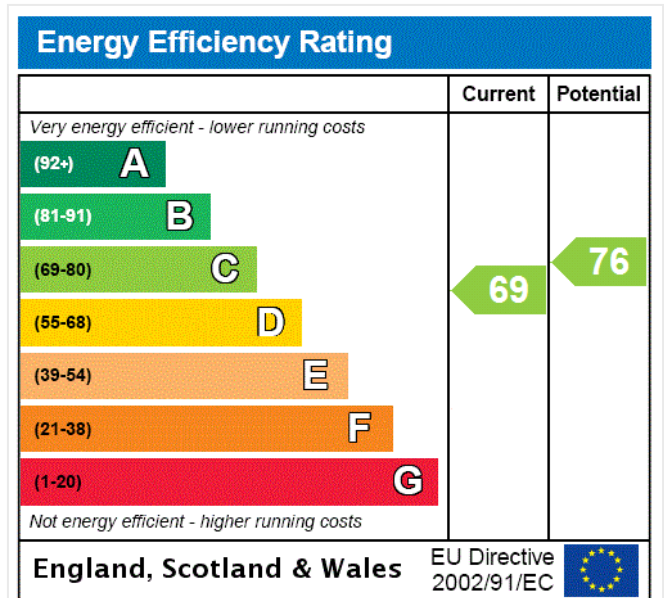


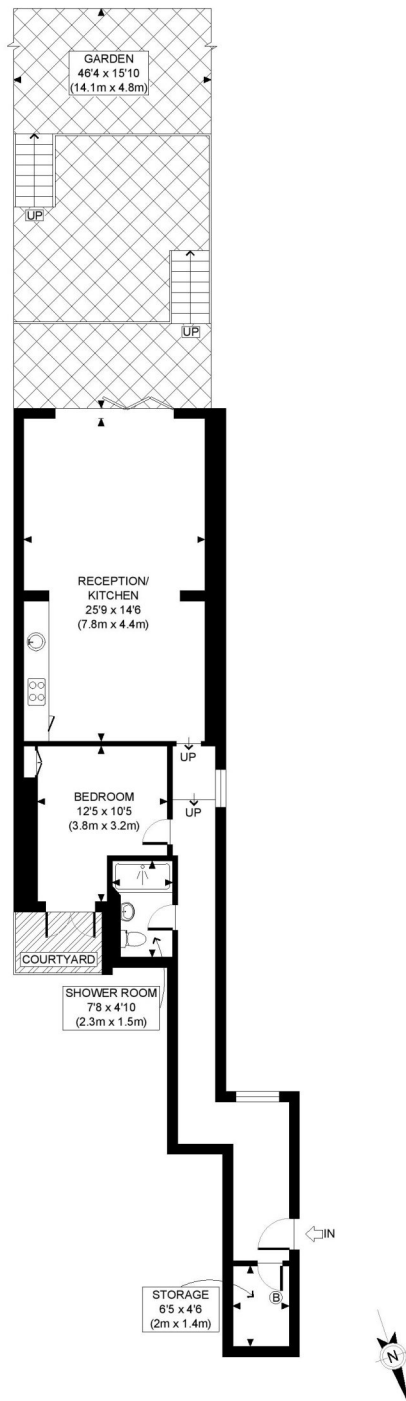


LOCAL AUTHORITY
Hammersmith & Fulham

TENURE
Share of Freehold.

PRICE: £425,000 Share of Freehold





LOWER GROUND FLOOR
GROSS INTERNAL
FLOOR AREA 765 SQ FT

APPROX. GROSS INTERNAL FLOOR AREA: 765 SQ FT/ 71 SQM

PROPERTY PHOT PLANS.CO.UK
ONE STOP SHOP FOR PROPERTY MARKETING

This plan is for illustrative purposes only and should be used as such by any prospective client. Whilst every attempt has been made to ensure the accuracy of the Floor Plan contained here, measurements of the doors, windows, rooms and any other items are approximate and no responsibility is taken for any errors, omissions, or misstatement. The services, systems and appliances shown have not been tested and no guarantee as to the operability or efficiency can be given.

The displayed square footage is taken from the floor plans with measurements created using the Royal Institute of Chartered Surveyors' Code of Practice for Measuring. These measurements are approximate and included for illustrative purposes only. Winkworth does not make any representation as to the accuracy of these measurements and you should seek to verify them for yourself. Winkworth accept no liability for any loss you may suffer if you rely on these measurements.

Shepherds Bush | 020 8735 3266 | shepherdsbush@winkworth.co.uk



for every step...

Under the Property Misdescriptions Act 1991, these Particulars are a guide and act as information only. All details are given in good faith and are believed to be correct at time of printing. Winkworth give no representation as to their accuracy and potential purchasers or tenants must satisfy themselves by inspection or otherwise as to their correctness. No employee of Winkworth has authority to make or give any representation or warranty in relation to this property.