



Evening Glade
Ferndown BH22 8DB
GUIDE PRICE £550,000

Winkworth



GUIDE PRICE £550,000
FREEHOLD

This superbly positioned and very spacious three double bedroom (formerly four double bedroom), three bathroom house occupies a larger than average corner plot enjoying delightful views over Ferndown's Championship Golf Course.

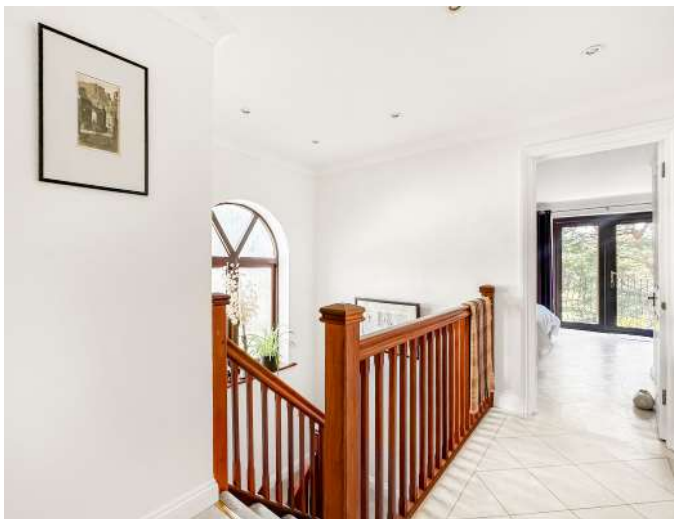
Tucked away in a superb location within this exclusive mews style development and further benefiting from an integral garage and off road parking via a block paved driveway.

Three/Four Bedrooms
Immaculate Throughout
Previous (now lapsed) Planning Permission For
Garage To The Side Of The Property
Three Bathrooms
Versatile Layout
Utility Room
Ground Floor Bedroom With Underfloor Heating
Integral Garage
Driveway
Sought After Location
Direct Views Over Golf Course
En-suite Bedroom With Balcony
Low Maintenance Garden

EPC D | Council Tax Band F

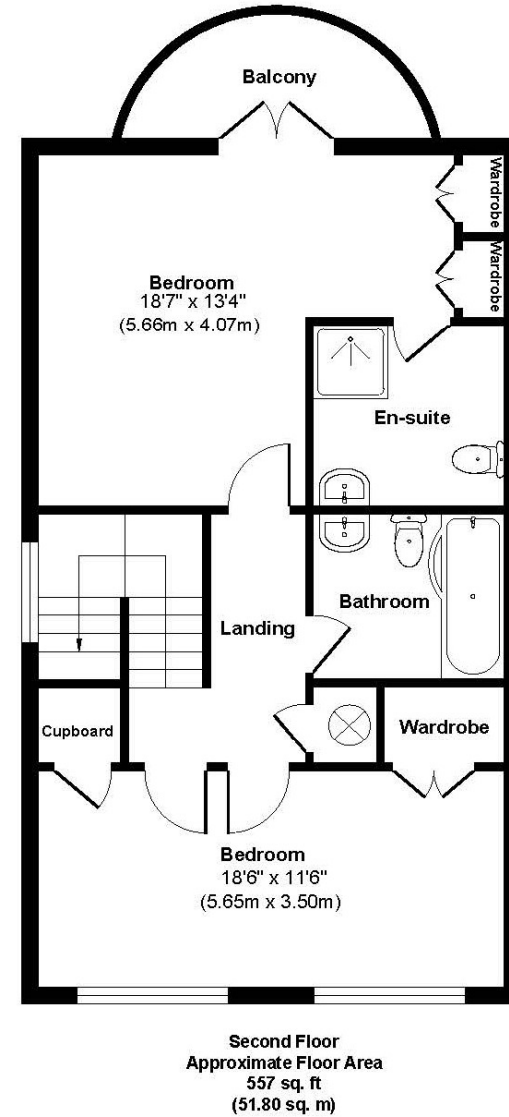
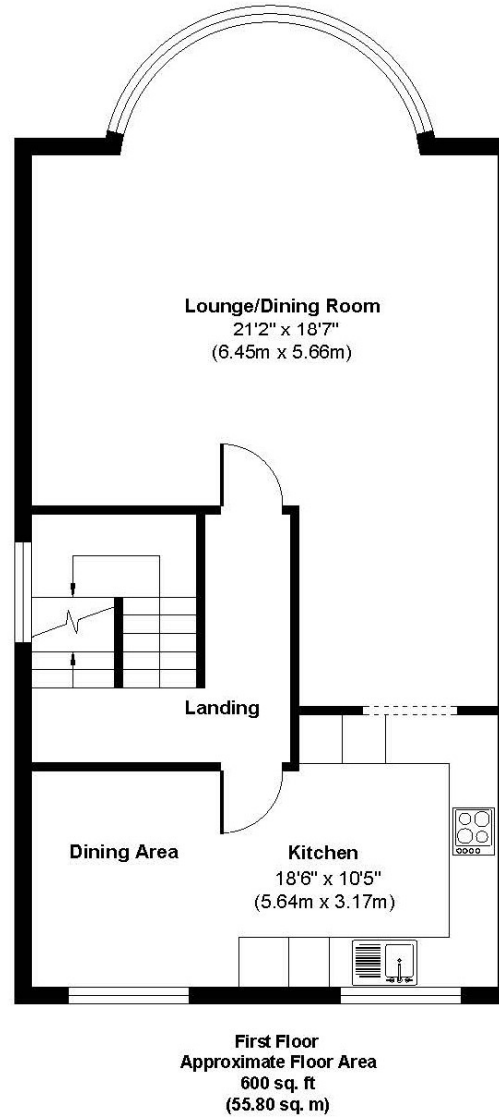
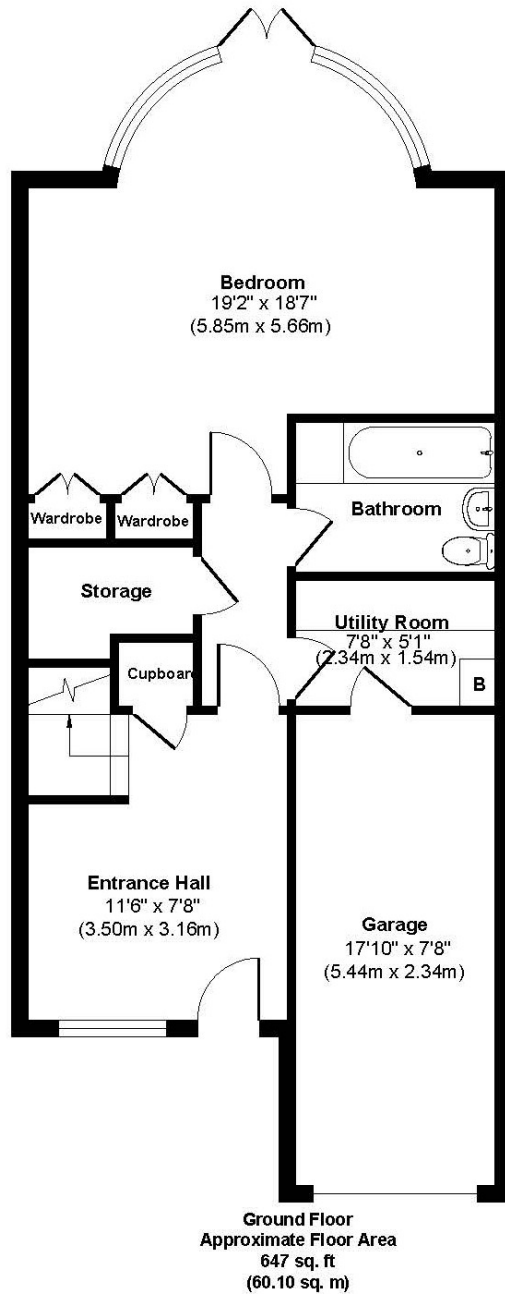
01202 434365

ferndown@winkworth.co.uk





Evening Glade



Approx. Gross Internal Floor Area 1805 sq. ft / 167.70 sq. m
Illustration for identification purposes only, measurements approximate and not to scale.



LOCATION

Positioned in a quiet residential area adjacent to Ferndown championship Golf Course and a short walk from the town centre which has a range of shops, cafes and amenities including an M&S Foodhall. There are bus routes nearby giving you easy access to Bournemouth, Poole and Wimborne, all of which have an excellent range of shops, restaurants and leisure facilities. Award winning beaches are just twenty minutes away and the A31 provides quick access to the New Forest, Southampton, London and beyond for the commuter by car.

Winkworth Ferndown

406 Ringwood Road, Ferndown, Dorset, BH22 9AU

01202 434365 | ferndown@winkworth.co.uk

winkworth.co.uk/ferndown

Winkworth