



BELVEDERE ROAD, LONDON, SE19
£2,300 PER MONTH FURNISHED

BEAUTIFULLY PRESENTED TWO BEDROOM FLAT FOR RENT ON THE POPULAR BELVEDERE ROAD

Crystal Palace | 02038693222 | crystalpalace@winkworth.co.uk

Winkworth

for every step...

winkworth.co.uk



DESCRIPTION:

Winkworth is pleased to offer this beautifully presented two double bedroom flat for rent on the ever-popular Belvedere Road.

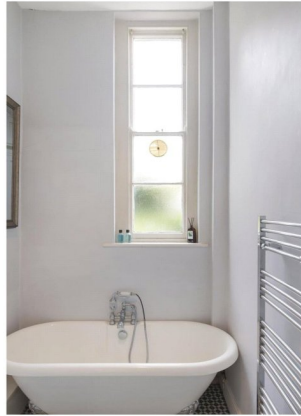
The property is located in a well-maintained period conversion and benefits from its own private entrance, separate fitted kitchen, larger than average reception room with space to dine and a beautiful fireplace with patio doors out onto the private garden, two good sized double bedrooms and a family bathroom with roll top bath and separate shower.

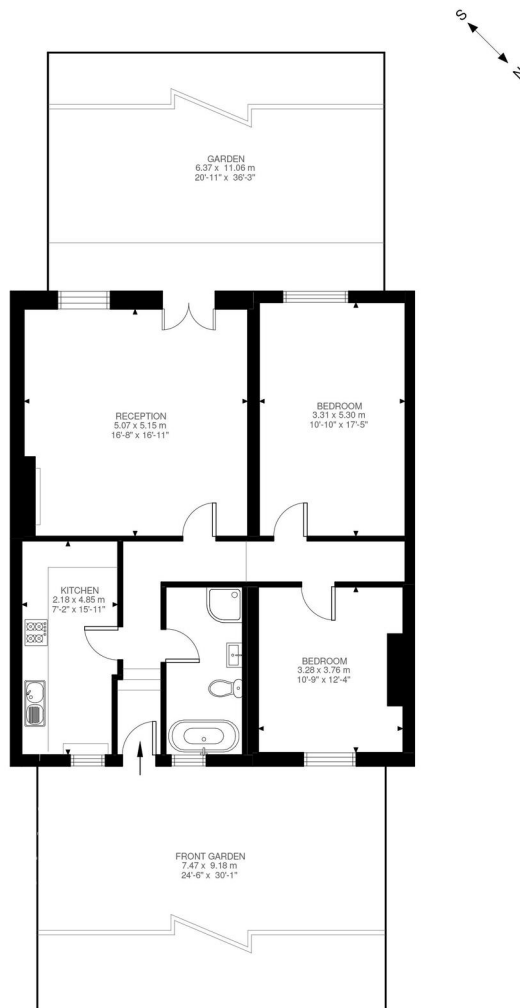
The property is presented in excellent condition throughout & benefits from stunning high ceilings, larger than average sash windows which allow for an abundance of natural light & original wooden shutters.

Offered furnished, residents off street parking & available from early May.

With the superb transport links of Crystal Palace within easy reach and the excellent amenities around the Crystal Palace "Triangle" being a short walk away, this is a great property to enjoy Crystal Palace living.







Ground Floor
951 ft²

Belvedere Road, SE19
Approximate Gross Internal Area
88.37 SQ.M / 951 SQ.FT

Illustration for identification purposes only. Not to scale.
Floor Plan Drawn According To RICS Guidelines.

This floorplan is for illustration purposes only and is not to scale. The position and size of doors, windows, appliances and other features are approximate.

Score	Energy rating	Current	Potential
92+	A		
81-91	B		
69-80	C		77 C
55-68	D	65 D	
39-54	E		
21-38	F		
1-20	G		

Holding Deposit: £530.77 (1 weeks rent)

Deposit: £2,653.85 (5 weeks rent)

Bromley Council Tax Band C: £1,815.52pa

Where no figures are shown, we have been unable to ascertain the information. All figures that are shown were correct at the time of printing.



Crystal Palace | 02038693222 | crystalpalace@winkworth.co.uk

[winkworth.co.uk](https://www.winkworth.co.uk)

Winkworth wishes to inform prospective buyers and tenants that these particulars are a guide and act as information only. All our details are given in good faith and believed to be correct at the time of printing but they don't form part of an offer or contract. No Winkworth employee has authority to make or give any representation or warranty in relation to this property. All fixtures and fittings, whether fitted or not are deemed removable by the vendor unless stated otherwise and room sizes are measured between internal wall surfaces, including furnishings.