

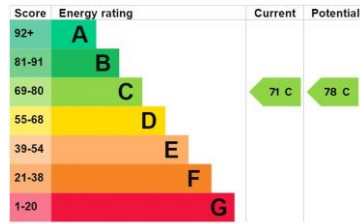
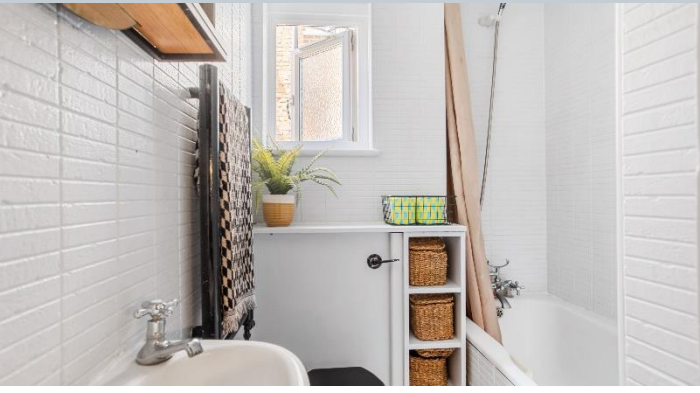
Winkworth

77 Longfield Street, London SW18 5RD





A lovely ground floor Edwardian maisonette benefitting from a private Southerly facing garden. Situated on a quiet residential street, this property would make an ideal first-time purchase. Accommodation includes a modern galley kitchen, leading through to a well-presented living/dining room. Two double bedrooms are serviced by a bathroom with white suite. To the rear is a beautiful private garden. Sold with no onward chain.



Features

- 2 double bedrooms
- Private Garden
- Residents Parking
- Chain Free

Share of Freehold

Internal area

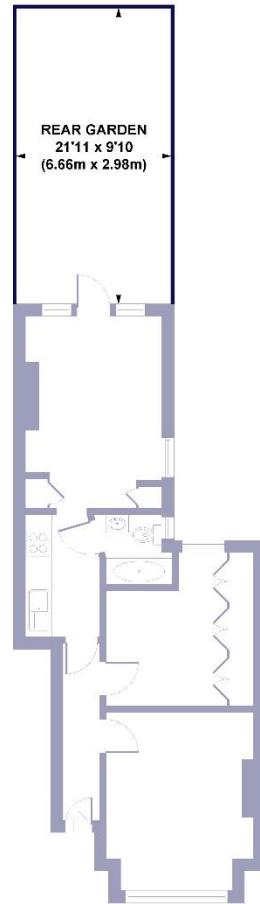
Total 523 sq. ft/ 48.63 sq. m

Price

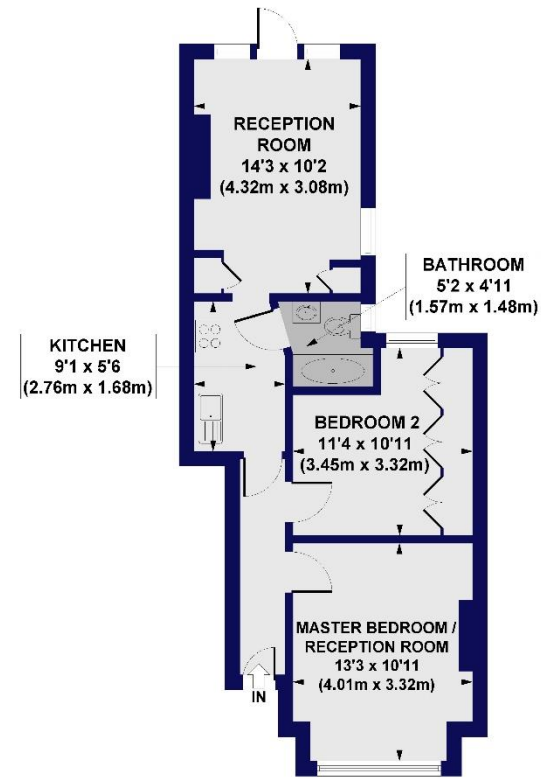
£525,000

Longfield Street, SW18

Approx. Gross Internal Floor Area 523 sq. ft / 48.63 sq. m



SITE PLAN



GROUND FLOOR

All measurements of walls, doors, windows, fittings and appliances, including their size and location, are shown as standard sizes and do not constitute any warranty or representation by the seller, their agent or CP Creative. Any intending purchaser must satisfy himself by inspection or otherwise as to the correctness of the information contained in these plans. This plan is for illustrative purposes only and should be used as such by any prospective purchasers.