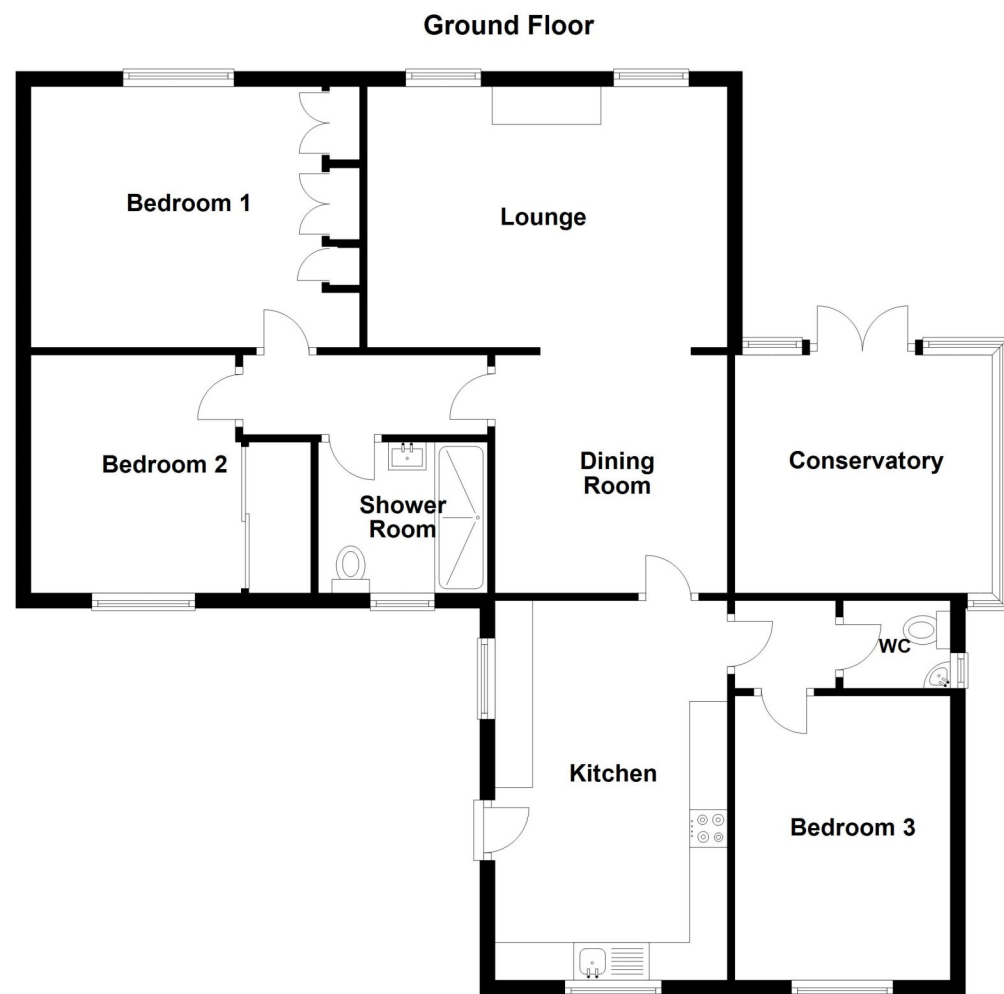


EPC TO FOLLOW



20a Lincoln Road, Digby, Lincoln, Lincolnshire, LN4 3NB

£350,000 Freehold

This extremely spacious and immaculately presented Three Bedroom Detached Bungalow offers flexible living accommodation and a lovely wrap around landscaped garden.

The property is approached via a gravel driveway with parking for up to ten vehicles. The rear of the property is principally laid to lawn with a large paved patio area, non-overlooked, fencing and hedging to all aspects.

FANTASTIC SIZED PLOT | AMPLE PARKING | GORGEOUS SUNSET VIEWS TO FRONT ASPECT | LARGE WRAP AROUND GARDENS | STUNNING KITCHEN | MODERN FITTED SHOWER ROOM | CONSERVATORY | LARGE PAVED PATIO AREA | LOUNGE WITH LOG BURNER | MODERNISED THROUGHOUT



The accommodation comprises of Lounge, Kitchen/Diner, Dining Room, Conservatory, Three Double Bedrooms, Separate Cloakroom & a Shower Room.

This lovely Bungalow is positioned the edge of the popular village of Digby, in a non estate position and with stunning views over countryside to the front aspect which is westerly aspected.

Digby is a popular village located between Sleaford and Lincoln and has many amenities including a village hall, primary school, public house and park. It is conveniently positioned between Sleaford & Lincoln offering easy travel links to both via the B1188. It is also located close to numerous RAF bases such as Cranwell, Digby, Waddington & Coningsby.



ACCOMMODATION

Entrance Hall

Living Room - 15'8" x 11'5" (4.78m x 3.48m)

Dining Room - 12' x 10'3" (3.66m x 3.12m)

Kitchen - 16'6" x 10'3" (5.03m x 3.12m)

Conservatory - 12'2" x 11'2" (3.7m x 3.4m)

Bedroom One - 14'4" x 11'4" (4.37m x 3.45m)

Bedroom Two - 12' x 10'3" (3.66m x 3.12m)

Bedroom Three - 12'1" x 8'1" (3.68m x 2.46m)

Cloakroom

Shower Room - 7'4" x 6'4" (2.24m x 1.93m)

LOCAL AUTHORITY

North Kesteven District Council

TENURE

Freehold

COUNCIL TAX BAND

C

