



HEATHWOOD GARDENS, CHARLTON, LONDON, SE7
£850,000 FREEHOLD

WE ARE DELIGHTED TO OFFER THIS PRETTY, FOUR BEDROOM, THREE STOREY, FAMILY HOME THAT MEASURES AN IMPRESSIVE 1929 SQ FT AND IS LOCATED ON THIS QUIET AND IMMENSELY POPULAR ROAD, LOCATED JUST EAST OF CHARLTON VILLAGE!

Greenwich | 02030533033 | greenwich@winkworth.co.uk

Winkworth

winkworth.co.uk

See things differently



DESCRIPTION:

We are delighted to offer this pretty, four bedroom, three storey, family home that measures an impressive 1929 sq ft and is located on this quiet and immensely popular road, located just east of Charlton Village!

The property is presented in good order throughout and still retains many of its original features. The accommodation briefly comprises of three large reception rooms on the ground floor, with a lovely modern 12ft kitchen to the rear. Access to the garden can either be from the kitchen or middle reception room. Upstairs there are four double bedrooms, which includes the master room in the loft conversion, two bathrooms and a utility room/WC on the first floor. Benefits include hard wood flooring on the ground floor, feature fireplaces and eaves storage. To the rear is a stunning west facing garden that is part paved, with lawned area, vegetable patch and shed. Heathwood Gardens is certainly considered one of the very best roads in the Charlton area. Not only is it a quiet road, but it's also in close proximity to the village centre, plus the local retail park, which features a large Sainsbury and M&S. It is only a five minute bus ride or 15 minute walk to the Elizabeth line and DLR at Woolwich Arsenal. Your earliest viewing is recommended.

AT A GLANCE

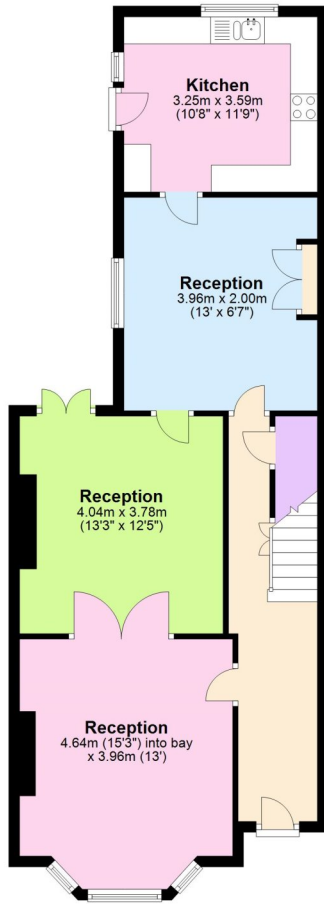
- Beautiful family home
- Mid terrace Victorian
- four double bedrooms
- three reception rooms
- three storey
- two bathrooms
- utility room/WC
- pretty rear garden
- c1929 sq ft
- 12ft fitted kitchen
- quiet and popular road





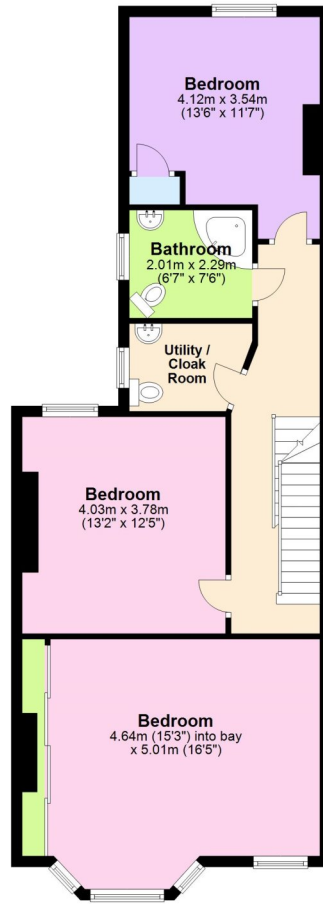
Ground Floor

Approx. 72.0 sq. metres (775.5 sq. feet)



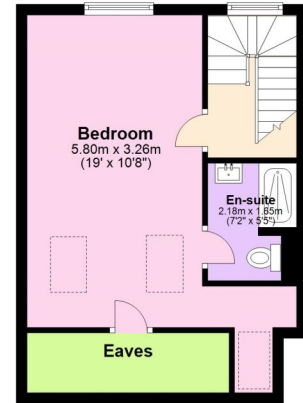
First Floor

Approx. 72.6 sq. metres (782.0 sq. feet)



Second Floor

Approx. 34.5 sq. metres (371.7 sq. feet)



Total area: approx. 179.2 sq. metres (1929.1 sq. feet)

This floorplan is for illustration purposes only and is not to scale. The position and size of doors, windows, appliances and other features are approximate.

Greenwich | 02030533033 | greenwich@winkworth.co.uk

Winkworth

winkworth.co.uk

See things differently

Winkworth wishes to inform prospective buyers and tenants that these particulars are a guide and act as information only. All our details are given in good faith and believed to be correct at the time of printing but they don't form part of an offer or contract. No Winkworth employee has authority to make or give any representation or warranty in relation to this property. All fixtures and fittings, whether fitted or not are deemed removable by the vendor unless stated otherwise and room sizes are measured between internal wall surfaces, including furnishings.