



PASSMORE STREET, LONDON, SW1W
£800 PER WEEK FURNISHED

A COSY 2 BEDROOM HOUSE LOCATED IN A QUITE SIDE STREET ONLY FEW MINUTES WALK FROM SLOANE SQUARE.

DESCRIPTION:

A cosy 2 bedroom house located in a quite side street only few minutes walk from Sloane Square. The property comprises of a bright reception room, a fully fitted kitchen, a family bathroom and a private back patio garden with a separate storage room.

AT A GLANCE

- 2 Double Bedroom House
- Terraced House
- 0.3 miles from Sloane Square
- Private Patio Garden
- Separate Storage room

Knightsbridge & Chelsea | 0207 589 6616 | knightsbridge@winkworth.co.uk





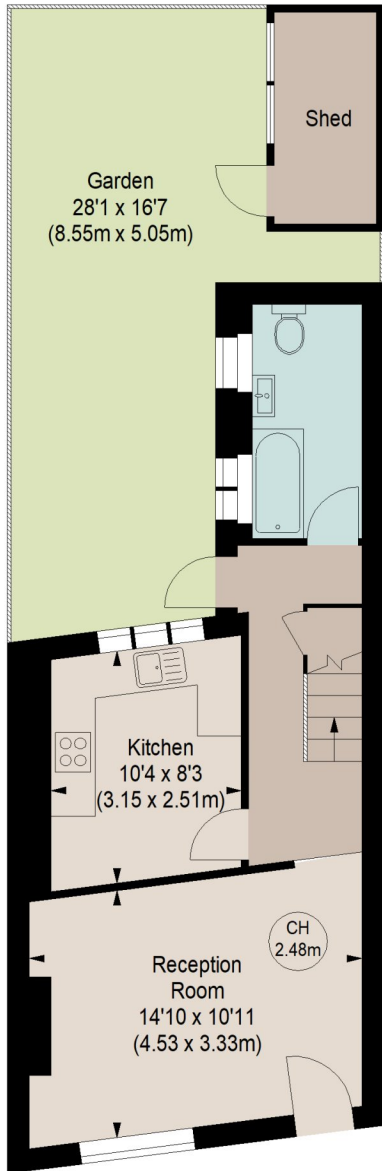
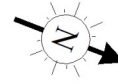
PASSMORE STREET, SW1W

Approximate gross internal area

759 sq ft / 70.51 sq m
(Including Shed)

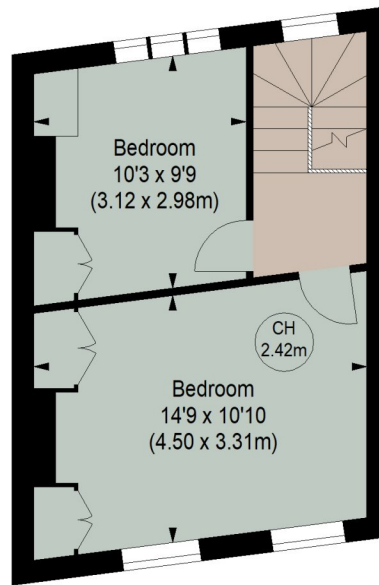
Shed
44 sq ft / 4.09 sq m

Key :
CH - Ceiling Height



GROUND FLOOR

(36.14 + 4.09 m²)



FIRST FLOOR

(30.28 m²)

Although every attempt has been made to ensure accuracy, all measurements are approximate.
This floorplan is for illustrative purposes only and not to scale.
Measured in accordance with RICS standards.

This floorplan is for illustration purposes only and is not to scale. The position and size of doors, windows, appliances and other features are approximate.

Deposit: £0.00

Holding Deposit:

Council Tax Band: G

Where no figures are shown, we have been unable to ascertain the information. All figures that are shown were correct at the time of printing.

