



DRAYTON PARK, Highbury, N5  
£400,000 LEASEHOLD

A FANTASTIC ONE BEDROOM PERIOD  
CONVERSION CLOSE TO HIGHBURY FIELDS  
AND PLENTIFUL TRANSPORT LINKS.

Islington | 0207 354 2480 | [islington@winkworth.co.uk](mailto:islington@winkworth.co.uk)

**Winkworth**

[winkworth.co.uk](http://winkworth.co.uk)

See things differently





## DESCRIPTION:

A beautifully presented, one double bedroom apartment set on the second floor of this handsome Victorian building in Highbury, N5. With unrivalled views down the street and across The Danny Fisman Bridge, the light pouring into every room is sensational. Accommodation comprises of a spacious reception room, while a sizeable kitchen set towards the rear offers plentiful dining space too. The larger than average bedroom has superb views too, while the property is completed with a modern bathroom.

The flat is set near to the ever-popular Highbury Barn which boasts an array of award-winning food shops and the Highbury Barn gastro pub. There are also superb transport links with Arsenal (Piccadilly line), Holloway Road (Piccadilly line) and Drayton Park (into Moorgate) being a very short distance away. Highbury and Islington Station (Victoria Line and Overground) and the high street shops and restaurants on Upper Street are located just across the green open space of Highbury Fields.

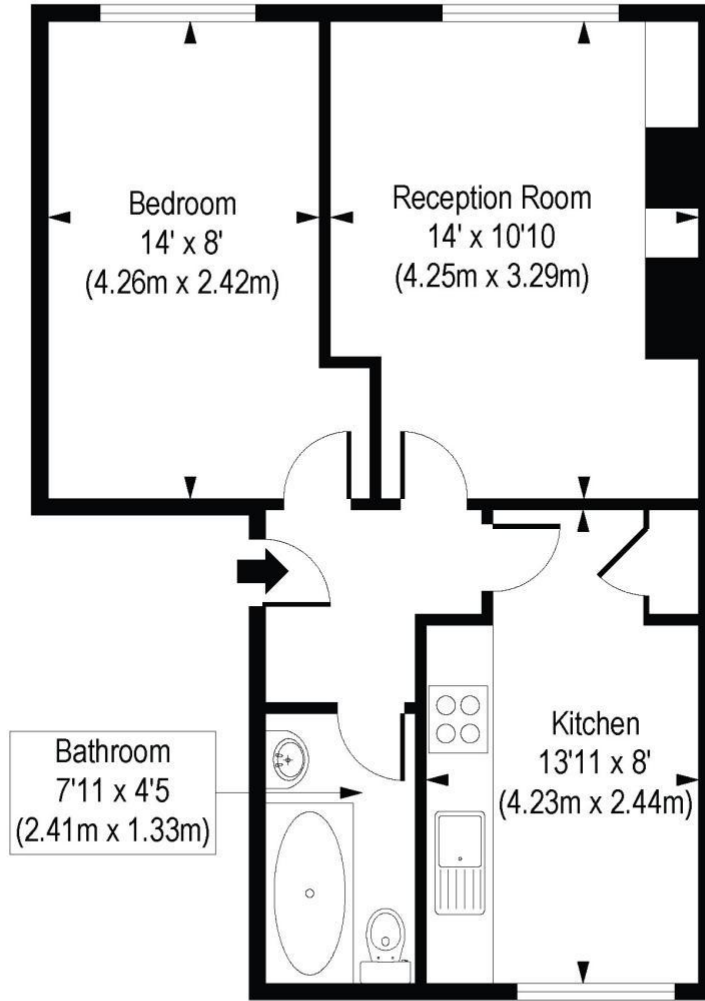
**Winkworth**



**Winkworth**

# Drayton Park, N5

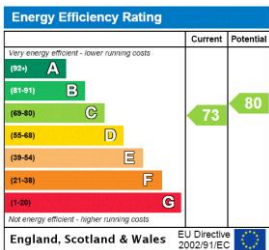
Approx. Gross Internal Floor Area 447 sq. ft / 41.51 sq. m



Second Floor

COMPLIANT WITH RICS CODE OF MEASURING PRACTICE Floorplan is for illustrative purposes only and is not to scale. Every attempt has been made to ensure the accuracy of the floorplan shown, however all measurements, fixtures, fittings and data shown are an approximate interpretation for illustrative purposes only. Liability for errors, omissions or mis-statement through negligence or otherwise is hereby excluded.

This floorplan is for illustration purposes only and is not to scale. The position and size of doors, windows, appliances and other features are approximate.



Islington | 0207 354 2480 | islington@winkworth.co.uk



winkworth.co.uk

See things differently

Winkworth wishes to inform prospective buyers and tenants that these particulars are a guide and act as information only. All our details are given in good faith and believed to be correct at the time of printing but they don't form part of an offer or contract. No Winkworth employee has authority to make or give any representation or warranty in relation to this property. All fixtures and fittings, whether fitted or not are deemed removable by the vendor unless stated otherwise and room sizes are measured between internal wall surfaces, including furnishings.