



Churchill Gardens, UK, SW1V

£1,850 PER MONTH

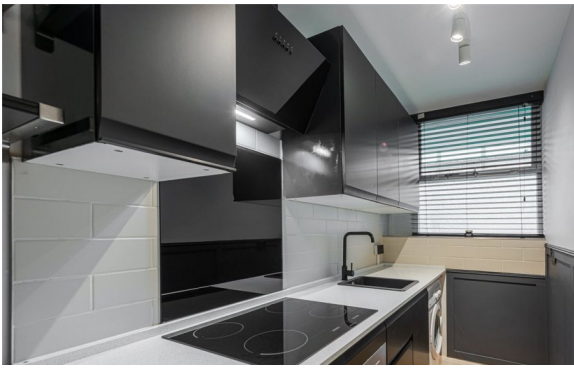
FURNISHED

AT A GLANCE

- Spacious Studio Room
- Separate Kitchen
- Private Patio
- Communal Gardens
- Residents Parking Available
- Heating / Hot Water Included in

Winkworth

for every step...



Energy Efficiency Rating		
	Current	Potential
Very energy efficient - lower running costs		
(92+) A		
(81-91) B		
(69-80) C	74	78
(55-68) D		
(39-54) E		
(21-38) F		
(1-20) G		
Not energy efficient - higher running costs		
England, Scotland & Wales	EU Directive 2002/91/EC	

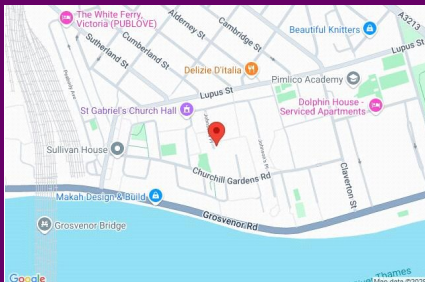
CHURCHILL GARDENS, UK, SW1V

£1,850 PER MONTH
FURNISHED

HEATING AND HOT WATER INCLUDED IN THE RENT - A beautifully presented and recently refurbished, ground floor studio apartment located within this low-rise purpose-built block in the popular Churchill Gardens.

The property has been completely refurbished internally and benefits from a new kitchen with fridge freezer, oven, induction hob, washing machine and microwave oven. The bathroom has also been newly fitted and has mirrored wall cabinets, heated towel radiator and rain shower. The spacious studio room has a large built in wardrobe with shelf and hanging space, double bed with additional under bed storage, desk/dining table with chairs, sofa bed and 55" Samsung smart TV. There is also access to a private patio garden.

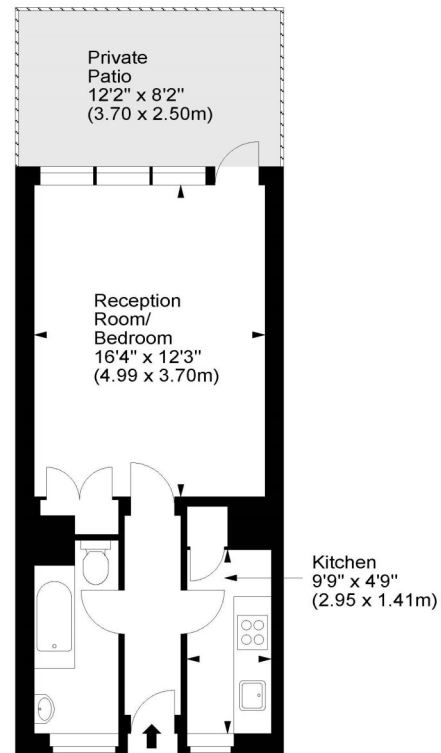
Churchill Gardens is situated moments from the River Thames and the local amenities on Lupus Street, Churton Street and Wilton Road. Slightly further afield is Victoria and the Battersea Power Station development with the green open spaces of Battersea Park also nearby.



winkworth wishes to inform prospective buyers and tenants that these particulars are a guide and act as information only. All our details are given in good faith and believed to be correct at the time of printing but they don't form part of an offer or contract. No Winkworth employee has authority to make or give any representation or warranty in relation to this property. All fixtures and fittings, whether fitted or not are deemed removable by the vendor unless stated otherwise and room sizes are measured between internal wall surfaces, including fire doors.

Churchill Gardens, SW1V

Approx. Gross Internal Area
350 Sq Ft - 32.52 Sq M



Ground Floor

For illustration purposes only. Not to scale.
All measurements are taken and shown at floor level.
www.r3photography.co.uk © Photography / Floor Plans / Lease Plans / EPCs



Pimlico & Westminster | 020 7828 1786 |
pimlico@winkworth.co.uk

winkworth.co.uk/pimlico



for every step...