

Ufford Street, London, SE1

£945,000 Freehold

A fantastic opportunity to acquire a two-bedroom house with a private garden in need of full renovation and ideally located between Southwark and Waterloo on Ufford Street, a particular street that has proven very popular. This house benefits from a double height outrigger which is rare on Ufford Street. EPC Rating E

LOCATION

You will find the house on Ufford Street, between Blackfriars and Waterloo Road. A beautiful, terraced residential street that sits behind the Cut in central Waterloo.

DESCRIPTION

The house will require extensive refurbishment throughout and is ideal for anyone looking to put their own stamp on a house in a fantastic area that has proven very popular. Enter the house and you will immediately find a sizeable sitting room to the front of the house offering pleasant views on to Ufford Street.

To the rear, sits an equally sizeable dining room with views on to the rear garden. The galley kitchen is located behind and benefits from direct access to the rear paved South-east facing garden. The kitchen also offers additional storage. The first floor is arranged to provide two double bedrooms divided by the staircase and ample loft storage above. There is potential to convert the loft to provide additional square footage as others have in recent years on the street STPP.

The family bathroom is located at the very rear of the second floor behind both bedrooms.

PARKING

Residents parking permit available from the Lambeth Council.

UTILITIES

Electricity – mains connected

Gas – mains connected

Water – mains connected

Heating – gas central heating

Sewerage – mains connected

Broadband – Superfast fibre

LOCAL AUTHORITY

Lambeth Council

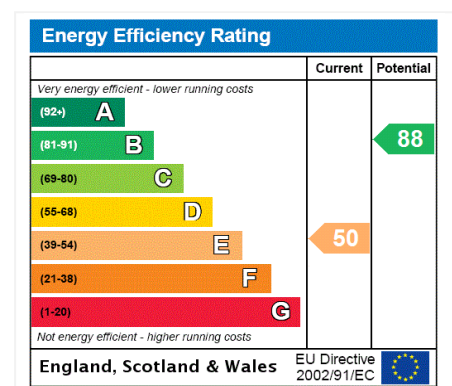
Council Tax Band E

TENURE

Freehold

DIRECTIONS

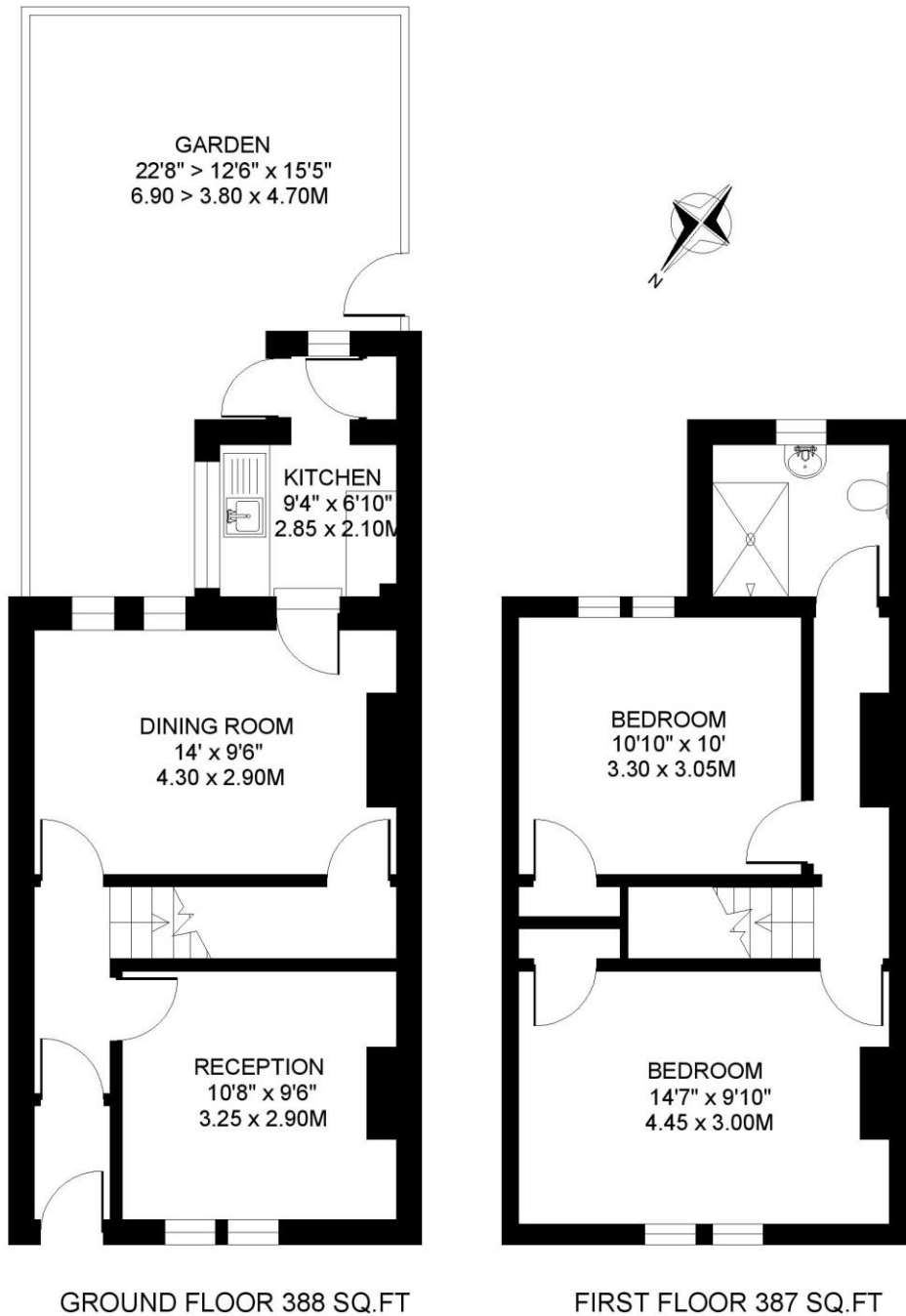
Waterloo Station (National Rail, Northern, Bakerloo, Jubilee and Waterloo & City Lines) is approximately 0.4 miles away. Southwark Underground Station (Jubilee Line) is approximately 0.2 miles away. The area is also well served with frequent bus services.





UFFORD STREET. SE1
2 BEDROOM HOUSE

Approximate gross floor area
775 SQ.FT / 72.0 SQ.M.



This floorplan is for illustration purposes only and is not to scale. The position and size of doors, windows, appliances and other features are approximate. Copyright: These plans should not be reproduced by any other person, without permission. Floorplan produced for Winkworth by Floorplanners 07801 228850

Kennington | 020 7587 0600 | kennington@winkworth.co.uk