



# Longstock Close

Chineham Basingstoke RG24 8WR

## Description

This is a very smart one bedroomed home with a contemporary kitchen and bathroom, two parking spaces and a corner garden – well worth a look! It is set in Chineham, a popular area with a wide range of amenities close by.

The kitchen has been fitted with cream coloured shaker style units and has a built-in oven and hob together with a free standing fridge/freezer and washing machine. The living/dining room is a decent size and has a deep 'box-bay' window.

Heading upstairs there is a large bedroom with an airing cupboard and built-in double wardrobe. The bathroom has a modern white suite with a 'shower-end' bath and fitted shower screen.

Externally there is a garden to front and side and two parking spaces.



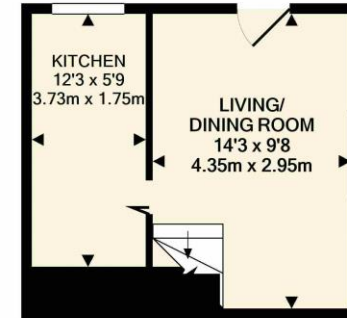
**Winkworth**

## Accommodation

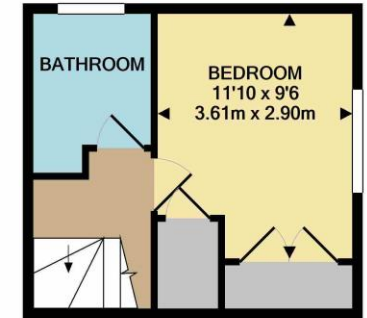
- Corner house
- Garden
- Two parking spaces
- Unfurnished
- Living/dining room
- Kitchen
- Double bedroom
- Bathroom
- Garden

Under the Property Misdescriptions Act 1991, these Particulars are a guide and act as information only. All details are given in good faith and are believed to be correct at time of printing. Winkworth give no representation as to their accuracy and potential purchasers or tenants must satisfy themselves by inspection or otherwise as to their correctness. No employee of Winkworth has authority to make or give any representation or warranty in relation to this property.

Energy Efficiency Rating		Current	Potential
Very energy efficient - lower running costs			
(92-100)	<b>A</b>		
(81-91)	<b>B</b>		
(69-80)	<b>C</b>		
(55-68)	<b>D</b>		
(39-54)	<b>E</b>		
(21-38)	<b>F</b>		
(1-20)	<b>G</b>		
Not energy efficient - higher running costs			
<b>England, Scotland &amp; Wales</b>		EU Directive 2002/91/EC	



GROUND FLOOR  
APPROX. FLOOR  
AREA 203 SQ.FT.  
(18.8 SQ.M.)



FIRST FLOOR  
APPROX. FLOOR  
AREA 220 SQ.FT.  
(20.4 SQ.M.)

TOTAL APPROX. FLOOR AREA 423 SQ.FT. (39.3 SQ.M.)

Whilst every attempt has been made to ensure the accuracy of the floor plan contained here, measurements of doors, windows, rooms and any other items are approximate and no responsibility is taken for any error, omission, or mis-statement. This plan is for illustrative purposes only and should be used as such by any prospective purchaser. The services, systems and appliances shown have not been tested and no guarantee as to their operability or efficiency can be given  
Made with Metropix ©2019



## Basingstoke Office

10B Church Street, Basingstoke, Hampshire, RG21 7QE

01256 811730 | basingstoke@winkworth.co.uk

[winkworth.co.uk/Basingstoke](http://winkworth.co.uk/Basingstoke)

# Winkworth

See things differently.