



VICTORIA ROAD, DARTMOUTH
£350,000 FREEHOLD

A SUPERB THREE BEDROOMED VICTORIAN HOUSE.

Dartmouth | 01803 832288 | dartmouth@winkworth.co.uk 3a Market Street, Dartmouth, TQ6 9QE

Winkworth

for every step...

winkworth.co.uk



SUMMARY: MIDSHIPS IS A SUPERB THREE BEDROOM VICTORIAN RED BRICK HOUSE, BEAUTIFULLY PRESENTED AND FILLED WITH CHARACTER FEATURES, APPROXIMATELY 10 MINUTES ON FOOT FROM THE TOWN CENTRE.

DIRECTIONS: From Dartmouth's Market Square turn right into Victoria Road. Carry on up Victoria Road, past the bowling green and children's playground on your right. Midships is approximately 250 meters further up Victoria Road on your left.

DESCRIPTION: Midships, has been lovingly cherished and is offered in superb decorative order with no onward chain. Sitting in an elevated position within a terrace of four properties, this deceptively large Victorian home is a successful commercial holiday let but it could also be enjoyed as a full-time residence. With features like stripped floors and doors, high ceilings and coving, period fireplaces, double glazed bay windows and a lovely terrace at the front of the property, to sit and dine.

THE ACCOMMODATION COMPRISES:

ENTRANCE HALLWAY: - A lovely stained glass front door leads into the entrance hallway with stripped floorboards which continue into the living room. Stairs rise to the first-floor landing with a convenient cloakroom underneath.

LIVING ROOM: - A large room with a beautiful, dominating period fireplace and a large bay window overlooking the front terrace. With high ceilings, coving and stripped floorboards this is a wonderfully cosy room.

DINING ROOM - Impressively generous room with period fireplace, carpeted and a window overlooking the rear courtyard. This space could easily be utilised as a fourth bedroom, playroom, hobby room or enjoyed to dine and entertain in.

KITCHEN: - A well equipped kitchen with ample floor and wall mounted cupboards with butcher's block style worktops. Integrated appliances include a dishwasher, washing machine, gas oven, and gas hob. There is additional space for a freestanding fridge freezer also. A glazed door leads out to a small rear courtyard.

FIRST FLOOR LANDING:

BEDROOM 3 - Either a large single or generous double bedroom (currently dressed with bunkbeds) overlooking the rear courtyard. With a period fireplace and cupboard housing a gas fired boiler which supplies domestic hot water and the central heating system.

A step-down leads to the fully tiled EN-SUITE BATHROOM which comprises a modern bath with hand held shower attachment, sink, toilet and heated towel rail.

BEDROOM 2: - A large double bedroom with a window overlooking the rear courtyard.

PRINCIPAL BEDROOM - This luxurious bedroom features a large bay window which overlooks the front terrace, period fireplace and incorporates a hotel style, modern EN-SUITE SHOWER ROOM with shower cubical and electric shower, toilet, and sink.

OUTSIDE - An attractive front terrace laid to decking with glass balustrade. Ideal for alfresco dining and winding down at the end of the day.

To the rear is a small courtyard which is the perfect size for a bistro table and chairs. There is also access to a generous store cupboard which is ideal for keeping outdoor pursuits related items or general household essentials.

COUNCIL TAX BAND: C

EPC: D

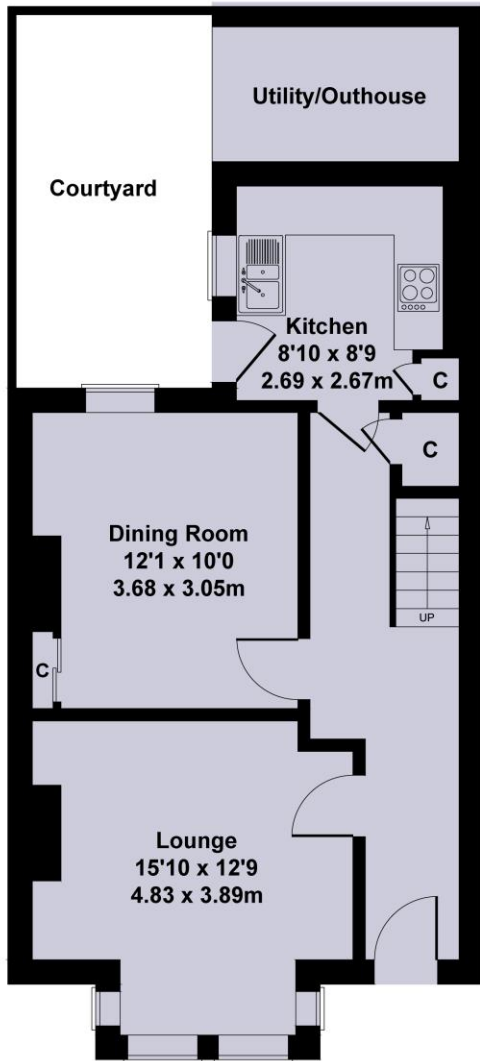
POSTCODE: TQ6 9EG

SERVICES - Mains water, electricity and gas are connected.

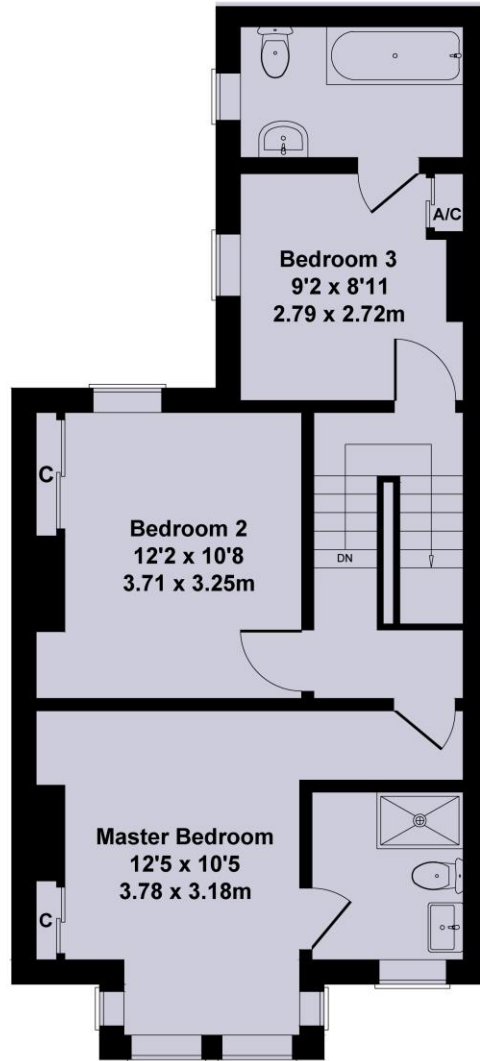


179 Victoria Road

Approximate Gross Internal Area
1108 sq ft - 103 sq m



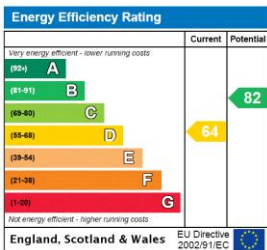
GROUND FLOOR



FIRST FLOOR

Not to Scale. Produced by The Plan Portal 2022
For Illustrative Purposes Only.

This floorplan is for illustration purposes only and is not to scale. The position and size of doors, windows, appliances and other features are approximate.



Dartmouth | 01803 832288 | dartmouth@winkworth.co.uk
3a Market Street, Dartmouth, TQ6 9QE



for every step...

winkworth.co.uk

Winkworth wishes to inform prospective buyers and tenants that these particulars are a guide and act as information only. All our details are given in good faith and believed to be correct at the time of printing but they don't form part of an offeror contract. No Winkworth employee has authority to make or give any representation or warranty in relation to this property. All fixtures and fittings, whether fitted or not are deemed removable by the vendor unless stated otherwise and room sizes are measured between internal wall surfaces, including furnishings.