



TALBOT ROAD, W2
£565 PER WEEK FURNISHED

**A SPACIOUS AND VERY BRIGHT ONE BEDROOM FLAT ENJOYING
FANTASTIC SOUTH FACING VIEWS OF THIS PERIOD CORNER
BUILDING IN THE HEART OF NOTTING HILL.**

Notting Hill Lettings | 0207 727 3227 | nottinghill@winkworth.co.uk

Winkworth

for every step...

winkworth.co.uk

DESCRIPTION

A wonderfully bright and spacious apartment situated on the third floor (with entrance on the second floor) of this charming period building in the heart of Notting Hill. The accommodation comprises a spacious open plan reception room and kitchen, with wonderful south facing views, large bedroom, bathroom and a separate utility cupboard. The property is offered furnished and viewings are highly recommended.

LOCATION

Talbot Road runs East to West, parallel to Westbourne Grove and crossing Ledbury Road. With host of boutiques and restaurants both on its doorstep and a very short walk away.




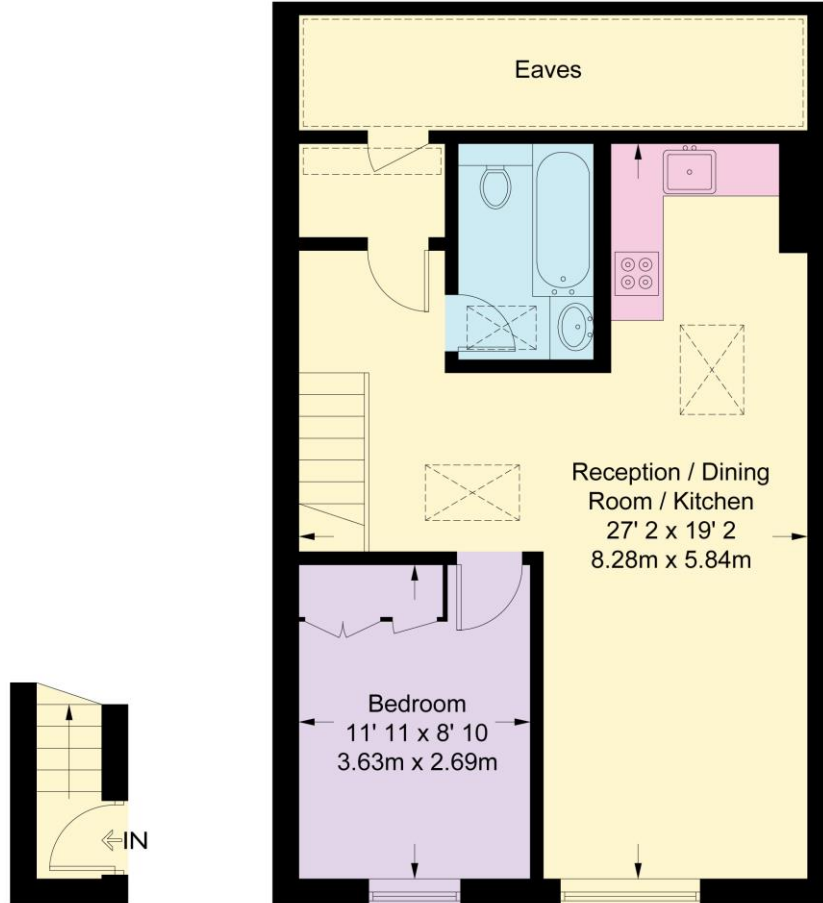


Talbot Road

Approximate Gross Internal Area = 577 sq ft / 53.7 sq m
 (Excluding Eaves / Reduced Headroom)
 Eaves / Reduced Headroom = 83 sq ft / 7.7 sq m
 Total = 660 sq ft / 61.4 sq m
 (Including Eaves / Reduced Headroom)



 = Reduced headroom below 1.5m / 5'0



Second Floor
 19 sq ft / 1.8 sq m

Third Floor
 641 sq ft / 59.6 sq m
 (Including Eaves / Reduced Headroom)

Not to scale, for guidance only and must not be relied upon as a statement of fact
 All measurements and areas are approximate only and have been prepared in
 accordance with the current edition of the RICS Code of Measuring Practice

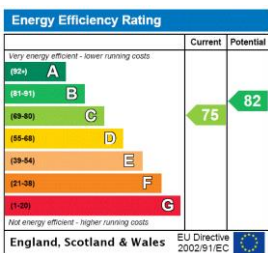
This floorplan is for illustration purposes only and is not to scale. The position and size of doors, windows, appliances and other features are approximate.

Deposit: £0.00

Holding Deposit:

Council Tax Band: D

Where no figures are shown, we have been unable to ascertain the information. All figures that are shown were correct at the time of printing.



Notting Hill Lettings | 0207 727 3227 | nottinghill@winkworth.co.uk

for every step...

winkworth.co.uk

Winkworth wishes to inform prospective buyers and tenants that these particulars are a guide and act as information only. All our details are given in good faith and believed to be correct at the time of printing but they don't form part of an offer or contract. No Winkworth employee has authority to make or give any representation or warranty in relation to this property. All fixtures and fittings, whether fitted or not are deemed removable by the vendor unless stated otherwise and room sizes are measured between internal wall surfaces, including furnishings.