



KINLOCH DRIVE, KINGSBURY, LONDON, NW9
£625,000 FREEHOLD

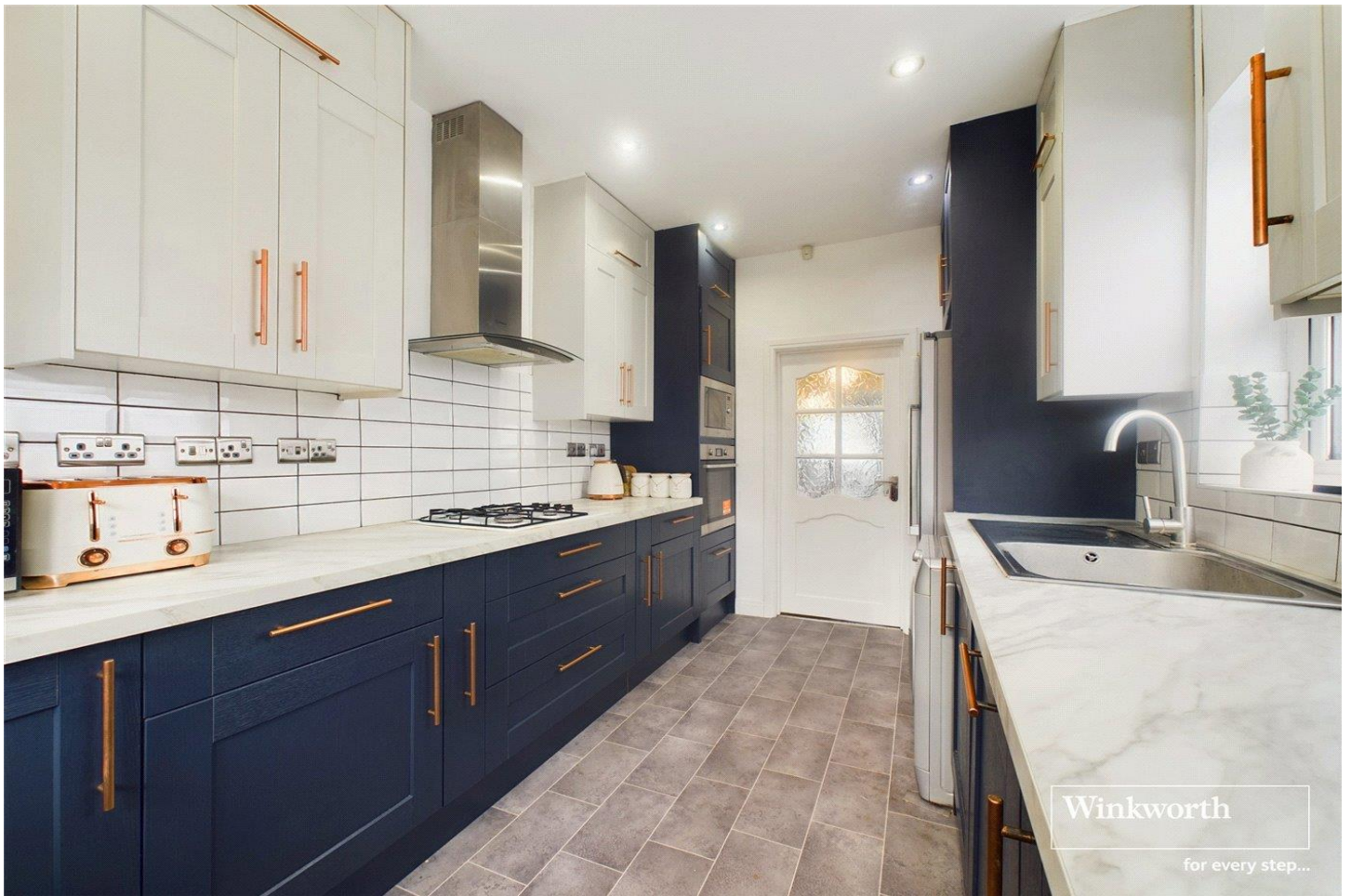
THREE BEDROOM SEMI DETACHED BUNGALOW

Kingsbury | 020 8204 0000 | kingsbury@winkworth.co.uk



for every step...

winkworth.co.uk



DESCRIPTION: A fondly loved & maintained three-bedroom semi-detached bungalow, perfectly situated in the peaceful & highly sought-after Welsh Harp Village. The property features three bedrooms, a study, a spacious shower room, a homely reception room adjoining with a well-appointed cosy dining room, & a modern kitchen. Outside, there's a charming rear garden complete with a garage, & off-street parking to the front. Outdoor enthusiasts will appreciate nearby Silver Jubilee Park, Welsh Harp Reservoir, & Fryent Country Park. For commuters, Hendon Thameslink is just 0.8 miles away, Kingsbury Station (Jubilee Line) is 1.2 miles, & Hendon Central (Northern Line) is 1.4 miles. Excellent schools such as Fryent Primary, Oliver Goldsmith, and Kingsbury High are within easy reach, along with a variety of places of worship, including Shree Swaminarayan Mandir Temple. An internal viewing is highly recommended.



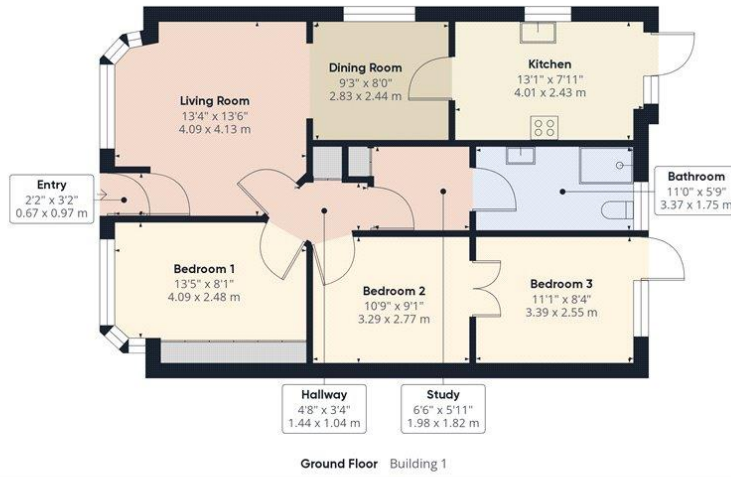
Winkworth

for every step...



Winkworth

for every step...



Approximate total area⁽¹⁾
923.33 ft²
85.78 m²

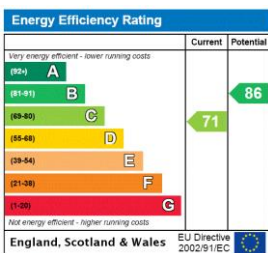


(1) Excluding balconies and terraces

While every attempt has been made to ensure accuracy, all measurements are approximate, not to scale. This floor plan is for illustrative purposes only.
Calculations are based on RICS IPMS 3C standard.

GIRAFFE360

This floorplan is for illustration purposes only and is not to scale. The position and size of doors, windows, appliances and other features are approximate.



Tenure: Freehold

Council Tax Band: D - Brent

Where no figures are shown, we have been unable to ascertain the information. All figures that are shown were correct at the time of printing.

Kingsbury | 020 8204 0000 | kingsbury@winkworth.co.uk

Winkworth

for every step...

winkworth.co.uk

Winkworth wishes to inform prospective buyers and tenants that these particulars are a guide and act as information only. All our details are given in good faith and believed to be correct at the time of printing but they don't form part of an offer or contract. No Winkworth employee has authority to make or give any representation or warranty in relation to this property. All fixtures and fittings, whether fitted or not are deemed removable by the vendor unless stated otherwise and room sizes are measured between internal wall surfaces, including furnishings.