



Hedgehog Hideaway, Winchester Road, Romsey, SO51 8AB

Winkworth



EXCEPTIONAL PROPERTY CLOSE TO ROMSEY TOWN CENTRE

This immaculately presented property is in a tucked away position, within easy walking distance of central Romsey. Romsey is an historic market town, providing an excellent range of leisure facilities, shops and supermarkets for everyday needs. The centre of Romsey hosts a large piazza, bordered by coffee shops and cafés the perfect place to catch up with friends. Schools for all ages, both state and private, are readily available. There is easy access to the M27 and M3 motorways, serving the major centres of Southampton, Winchester and Bournemouth. In addition, there is an excellent local bus service and a train station linking with the mainline services to London at Southampton. The New Forest National Park is within 6 miles of Romsey.

Hedgehog Hideaway is a true hidden gem, just a short walk from Romsey Town Centre. Formerly a School House this beautifully presented property offers three bedrooms, a stunning kitchen/breakfast/sitting room and a contemporary bathroom. An attractive property from the outside, continues on the inside. The kitchen/dining room/sitting room is superb, with its vaulted ceiling, the room has a real sense of space. The well-appointed kitchen with breakfast bar creates a lovely social space. The property benefits from three bedrooms, any of which could easily be adapted to provide a home office or snug. The family bathroom is super stylish, completing all on offer at this wonderful property is a separate WC.

Outside the property has a private courtyard garden along with two allocated spaces and a visitor's space.

- All mains' utilities
- Council Tax Band C – Test Valley Borough Council - £1,867.68
- Ultrafast Broadband available
- No onward chain



Winkworth

**Address: 6 English Court,
Winchester Road, Romsey,
Hampshire SO51 8AB**

**Council Tax Band: 'C' Test Valley
Borough Council £1867.68 PA**

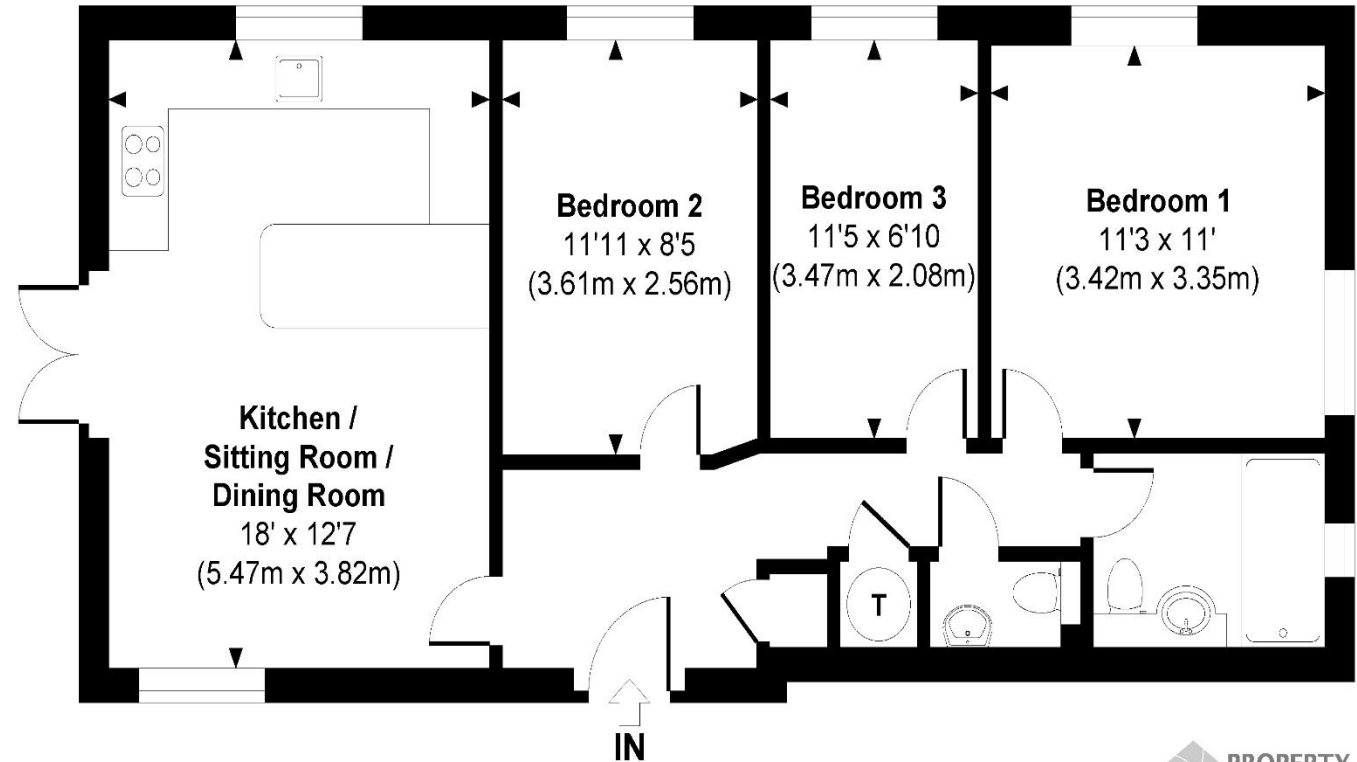
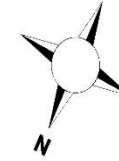
EPC: F

Tenure: Freehold



English Court

Approximate Gross Internal Area
Total = 711 Sq Ft / 66.05 Sq M



© www.propertyfocus.co | Professional Property Photography & Floorplans

This plan is for illustrative purposes only and is not to scale. If specified, the Gross Internal Area (GIA), dimensions, North point orientation and the size and placement of features are approximate and should not be relied on as a statement of fact. No guarantee is given for the GIA and no responsibility is taken for any error, omission or misrepresentation.

winkworth.co.uk/romsey

Winkworth Romsey

18 Market Place, Romsey, Hampshire, SO51 8NA
01794 511911 | romsey@winkworth.co.uk

winkworth.co.uk/romsey

Winkworth Winchester

2 Black Swan Buildings, Southgate Street,
Winchester, Hampshire, SO23 9DT
01962 866777 | winchester@winkworth.co.uk

Winkworth Mayfair & Country House Department

11 Berkeley Street, Mayfair, London, W1J 8DS
020 7871 0589 | countryhouse@winkworth.co.uk

Winkworth

See things differently