



NEWTON ROAD, W2

£595 PER WEEK (£2,578.33 PCM) Part Furnished

AN IMMACULATE AND NEWLY REFURBISHED TOP FLOOR ONE BEDROOM FLAT.

Long Let, 1 Bedroom, 1 Reception Room, 1 Bathroom, Flat/Apartment, Upper Floor without Lift, Part Furnished, 503 Approx. Sq Ft

Winkworth

Notting Hill | 0207 727 3227 | nottinghill@winkworth.co.uk
winkworth.co.uk

for every step...



DESCRIPTION:

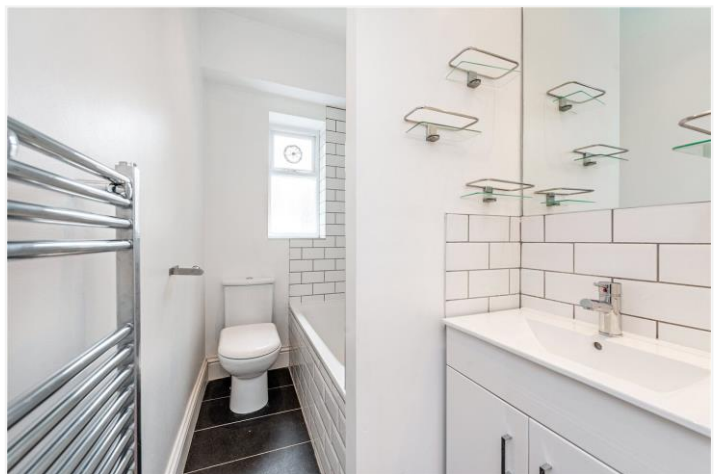
Located on the top floor of this pretty period conversion, a wonderfully bright and charming one bedroom flat with fantastic light comprising hallway with storage cupboard housing a washer/dryer, spacious fully fitted integrated kitchen with large window, spacious living room with hardwood flooring and ornamental fireplace. Spacious double bedroom and separate bathroom. The property is available part-furnished and viewings highly recommended.

LOCATION:

Newton Road is a delightfully peaceful street, located just behind the many shops, bars and restaurants of Westbourne Grove and a short walk from the amenities and transport links of Queensway.

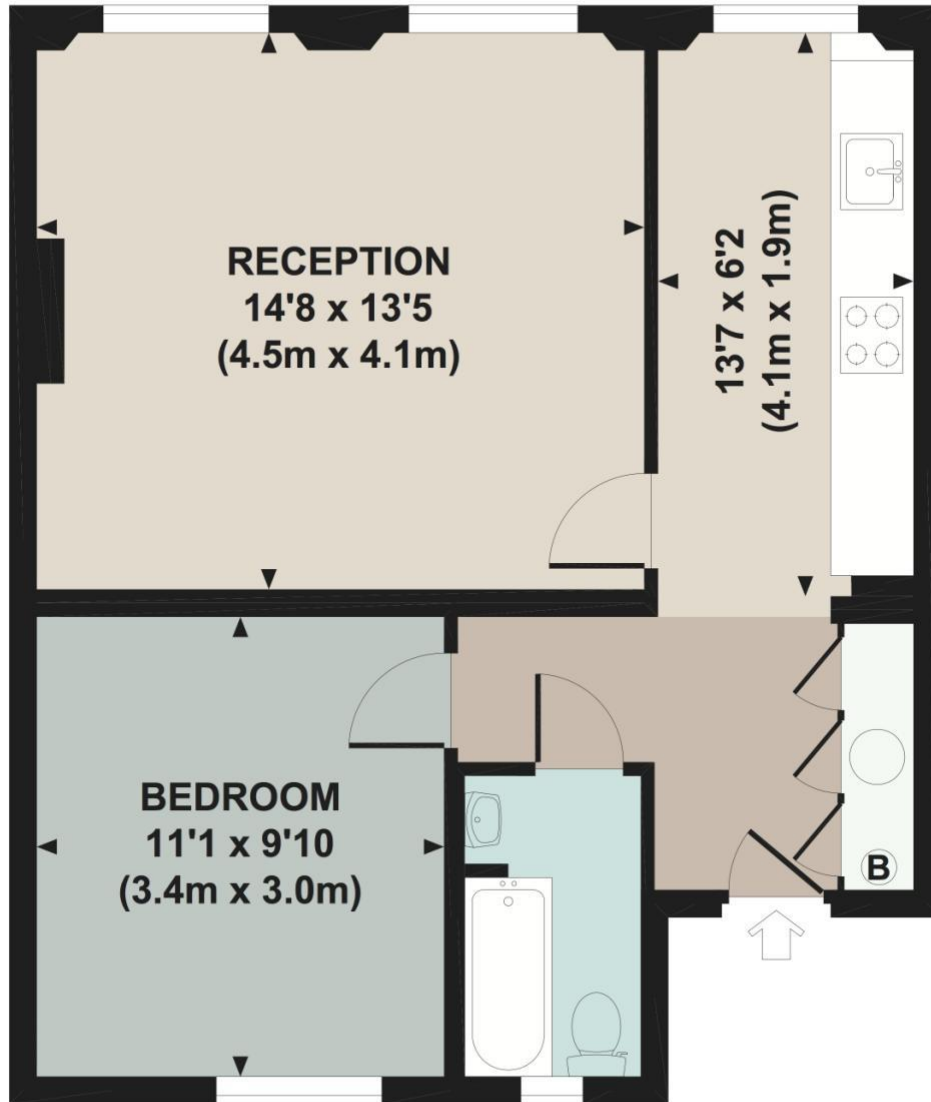
LOCAL AUTHORITY AND COUNCIL TAX BAND:

City of Westminster (Band D)



NEWTON ROAD, W2

Approx. gross internal area
503 Sq Ft. / 46.8 Sq M.

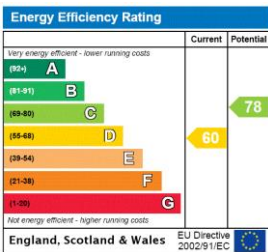


THIRD FLOOR



All measurements are approximate and for illustration purposes only as defined by the RICS Code of Measuring Practice © 2014 Dowling Jones Design www.dowlingjones.com 020 7610 9933

This floorplan is for illustration purposes only and is not to scale. The position and size of doors, windows, appliances and other features are approximate.



Notting Hill | 0207 727 3227 | nottinghill@winkworth.co.uk



winkworth.co.uk

for every step...

winkworth wishes to inform prospective buyers and tenants that these particulars are a guide and act as information only. All our details are given in good faith and believed to be correct at the time of printing but they don't form part of an offer or contract. No winkworth employee has authority to make or give any representation or warranty in relation to this property. All fixtures and fittings, whether fitted or not are deemed removable by the vendor unless stated otherwise and room sizes are measured between internal wall surfaces, including furnishings.