



West Warwick Place, UK, SW1V

£2,743 PER MONTH

UNFURNISHED

AT A GLANCE

- Well Presented
- Two Double Bedrooms
- Two Bathrooms
- Split Level
- Quiet Location
- Over 800 sq ft

Winkworth

for every step...



Energy Efficiency Rating		Environmental Impact (CO ₂) Rating	
Current	Potential	Current	Potential
Very energy efficient - lower running costs		Very environmentally friendly - lower CO ₂ emissions	
(92-100) A		(92-100) A	
(81-91) B		(81-91) B	
(69-80) C		(69-80) C	79
(55-68) D	62	(55-68) D	57
(39-54) E		(39-54) E	
(21-38) F		(21-38) F	
(1-20) G		(1-20) G	
Not energy efficient - higher running costs		Not environmentally friendly - higher CO ₂ emissions	
England, Scotland & Wales EU Directive 2002/91/EC		England, Scotland & Wales EU Directive 2002/91/EC	

The energy efficiency rating is a measure of the overall efficiency of a home. The higher the rating the more energy efficient the home is and the lower the fuel bills will be.

The environmental impact rating is a measure of a home's impact on the environment in terms of carbon dioxide (CO₂) emissions. The higher the rating the less impact it has on the environment.

WEST WARWICK PLACE, UK, SW1V

£2,743 PER MONTH
UNFURNISHED

A well appointed two bedroom, two bathroom flat on a quiet residential road just off Warwick Way, SW1V. The flat is arranged over two floors and spans over 750 sq ft. The first floor comprises off a modern kitchen, with large fridge/freezer, electric hob and slimline dishwasher, the first bathroom can also be found just off from the kitchen. To the front of the property is a large, light and bright living room with high ceilings and beautiful double glazed windows. The second floor comprises of two good sized double bedrooms with inbuilt storage, and a modern ensuite in the master bedroom. The flat is available on a unfurnished basis.

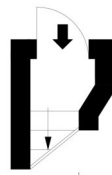
Deposit Amount: £3,166.15



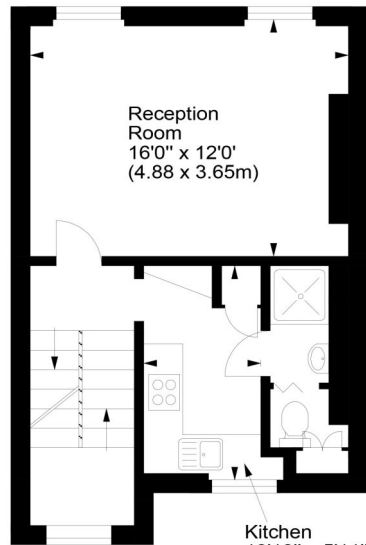
winkworth wishes to inform prospective buyers and tenants that these particulars are a guide and act as information only. All our details are given in good faith and believed to be correct at the time of printing but they don't form part of an offer or contract. No winkworth employee has authority to make or give any representation or warranty in relation to this property. All fixtures and fittings, whether fitted or not are deemed removable by the vendor unless stated otherwise and room sizes are measured between internal wall surfaces, including fireplaces.

West Warwick Place, SW1

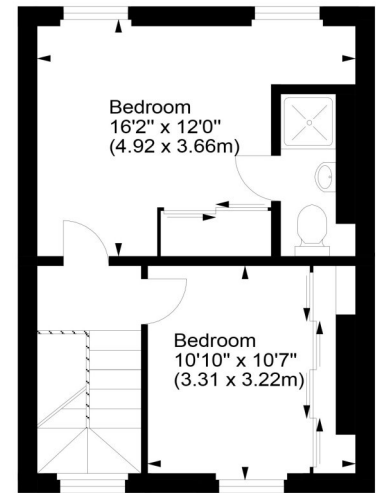
Approx. Gross Internal Area
762 Sq Ft - 70.79 Sq M



Ground Floor
Entrance



First Floor



Second Floor

For illustration purposes only. Not to scale.
All measurements are taken and shown at floor level.
www.r3photography.co.uk © Photography / Floor Plans / Lease Plans / EPCs



Pimlico & Westminster | 020 7828 1786 |
pimlico@winkworth.co.uk

winkworth.co.uk/pimlico

Winkworth

for every step...