



**23 FOXGLOVE CLOSE, WOKINGHAM, BERKSHIRE, RG41 3NF
OIE £700,000 FREEHOLD**

SITUATED IN ONE OF WOKINGHAM'S MOST SOUGHT AFTER DEVELOPMENTS IS THIS 4 BEDROOM DETACHED FAMILY HOME OFFERED TO THE MARKET WITH NO ONWARD CHAIN.



Wokingham | 01189 072777 | wokingham@winkworth.co.uk

for every step...

winkworth.co.uk



DESCRIPTION:

Situated in one of Wokingham's most sought after developments is this 4 bedroom detached family home offered to the market with no onward chain.

The property comprises entrance hall with storage, family room/office, cloakroom, living room with open fireplace and bay window, dining room, conservatory and kitchen and utility room. To the first floor there are four bedrooms, with built in wardrobes to three bedrooms and two bathrooms with the master bedroom suite having an en suite shower room.

The front is open plan with driveway to the side providing parking for two vehicles with the remainder laid out as lawn and mature shrubs. There is a double garage which has side access from the garden. Gated side access leads to a secluded rear garden comprising patio with the rest laid to lawn and enclosed by timber fencing.

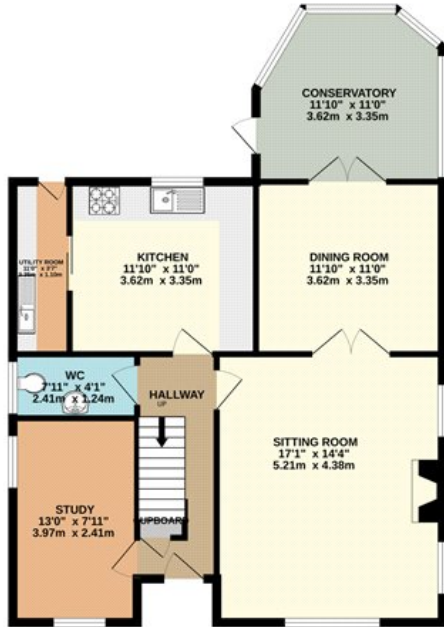
Foxglove Close is located just 2 miles from the popular market town centre of Wokingham with its numerous, restaurants, bars, pubs, shops and amenities and local train station with direct links to London Waterloo. You also have a number of outstanding local schools within one mile of the property including the hugely popular Forest School, The Holt, and Emmbrook.

AT A GLANCE

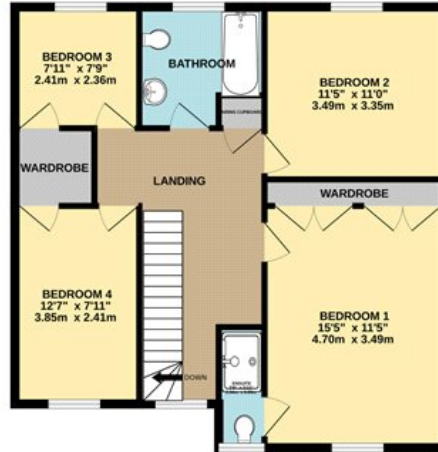
- Four Bedrooms
- Three Reception rooms
- Kitchen and utility room
- Detached double garage
- Corner plot
- No Chain
- Broadband 22Mbps
- Council tax band F Wokingham
- Satellite/ Fibre TV Availability
- Mobile coverage Virgin, Vodafone, EE & O2



GROUND FLOOR
866 sq.ft. (80.5 sq.m.) approx.



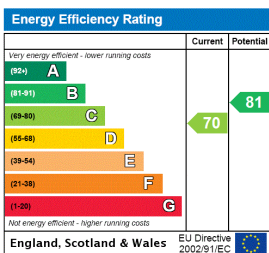
1ST FLOOR
731 sq.ft. (67.9 sq.m.) approx.



TOTAL FLOOR AREA: 1597 sq.ft. (148.4 sq.m.) approx.

Whilst every attempt has been made to ensure the accuracy of the floorplan contained here, measurements of doors, windows, rooms and any other items are approximate and no responsibility is taken for any error, omission or mis-statement. This plan is for illustrative purposes only and should be used as such by any prospective purchaser. The services, systems and appliances shown have not been tested and no guarantee as to their operability or efficiency can be given.
Made with Metropix ©2024

This floorplan is for illustration purposes only and is not to scale. The position and size of doors, windows, appliances and other features are approximate.



Wokingham | 01189 072777 | wokingham@winkworth.co.uk

winkworth.co.uk

for every step...

Winkworth wishes to inform prospective buyers and tenants that these particulars are a guide and act as information only. All our details are given in good faith and believed to be correct at the time of printing but they don't form part of an offer or contract. No Winkworth employee has authority to make or give any representation or warranty in relation to this property. All fixtures and fittings, whether fitted or not are deemed removable by the vendor unless stated otherwise and room sizes are measured between internal wall surfaces, including furnishings.

We are required by law to conduct anti-money laundering checks on all those buying a property. Whilst we retain responsibility for ensuring checks and any ongoing monitoring are carried out correctly, the initial checks are carried out on our behalf by Landmark who will contact you once you have had an offer accepted on a property you wish to buy. The cost of these checks is £15 (plus VAT) per person and this will need to be paid by you in advance of us issuing a memorandum of sale, directly to Landmark, and is non-refundable.