

Winkworth

Flat 2, Burghley Hall Close, Princes Way, SW19 6TN





A well-presented two-bedroom ground floor flat, in the beautiful and tranquil neighbourhood of Southfields.

This bright property comprises; two bedrooms, one of which has fitted wardrobes, a modern bathroom, and an open-plan spacious lounge and kitchen, with direct access to the communal gardens. The kitchen is fitted with a stylish induction hob and a sleek stainless-steel oven. All the rooms are well-proportioned and tastefully decorated in a neutral colour scheme.

Conveniently located with just a short walk to Southfields Underground Station and the many bus routes nearby, this location is ideal for those looking to get away from the busier parts of London, but with all the conveniences of city living.



| Score | Energy rating | Current | Potential |
|-------|---------------|---------|-----------|
| 92+ | A | | |
| 81-91 | B | | |
| 69-80 | C | | 72 C |
| 55-68 | D | 55 D | |
| 39-54 | E | | |
| 21-38 | F | | |
| 1-20 | G | | |

Features

- 2-Bedrooms
- Communal Gardens
- S/C £1,707.82 PA
- Off-Street Parking
- Chain Free

Leasehold

Approx. 972 Yr

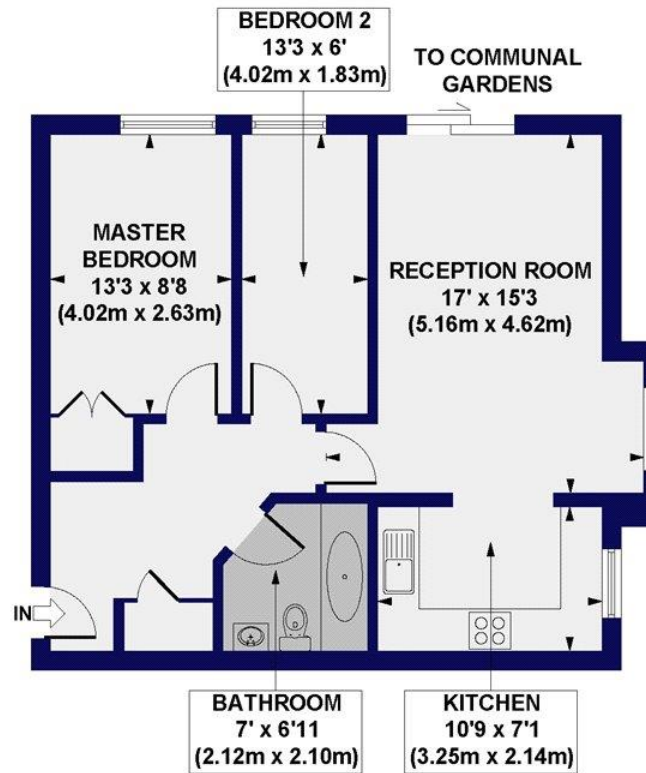
Internal area

Total 654 sq. ft/ 60.75 sq. m

Price

£425,000

Burghley Hall Close, SW19
 Approx. Gross Internal Floor Area 654 sq. ft / 60.75 sq. m



GROUND FLOOR

All measurements of walls, doors, windows, fittings and appliances, including their size and location, are shown as standard sizes and do not constitute any warranty or representation by the seller, their agent or CP Creative. Any intending purchaser must satisfy himself by inspection or otherwise as to the correctness of the information contained in these plans. This plan is for illustrative purposes only and should be used as such by any prospective purchasers.