



ELFORT ROAD, LONDON, N5
£700,000 SHARE OF FREEHOLD

A BEAUTIFUL, TWO DOUBLE BEDROOM
PERIOD CONVERSION WITH PRIVATE
OUTSIDE SPACE IN N5.

Hackney | 020 8986 4216 | hackney@winkworth.co.uk





DESCRIPTION:

A stunning, two double bedroom period conversion positioned on a quiet, peaceful street in the heart of Highbury. Laterally set across the entire ground floor, after stepping foot through your own entrance, you're welcomed into a wonderfully bright, west facing living room, opening directly out into a fully equipped, modern kitchen. Both bedrooms are genuine doubles, with the master bedroom benefitting from built in wardrobes, and the other having access to a private, patioed garden, ideal for those summer bbqs. The property is completed with a contemporary family sized bathroom and is offered to the market with a share of the freehold.

The property is set on a fully residential road in Highbury and is perfectly set for easy access to local amenities.

The well renowned Highbury Barn is within easy reach and offers a selection of cafes and independent shops including Da Marios Deli, Godfreys butchers, Bournes fishmongers and La Fromagerie. The bars, restaurants and high street shops on Upper Street are also close by and the property also benefits from a fantastic array of transport links.

Arsenal offers the closest underground links on the Piccadilly line whilst over ground services and the

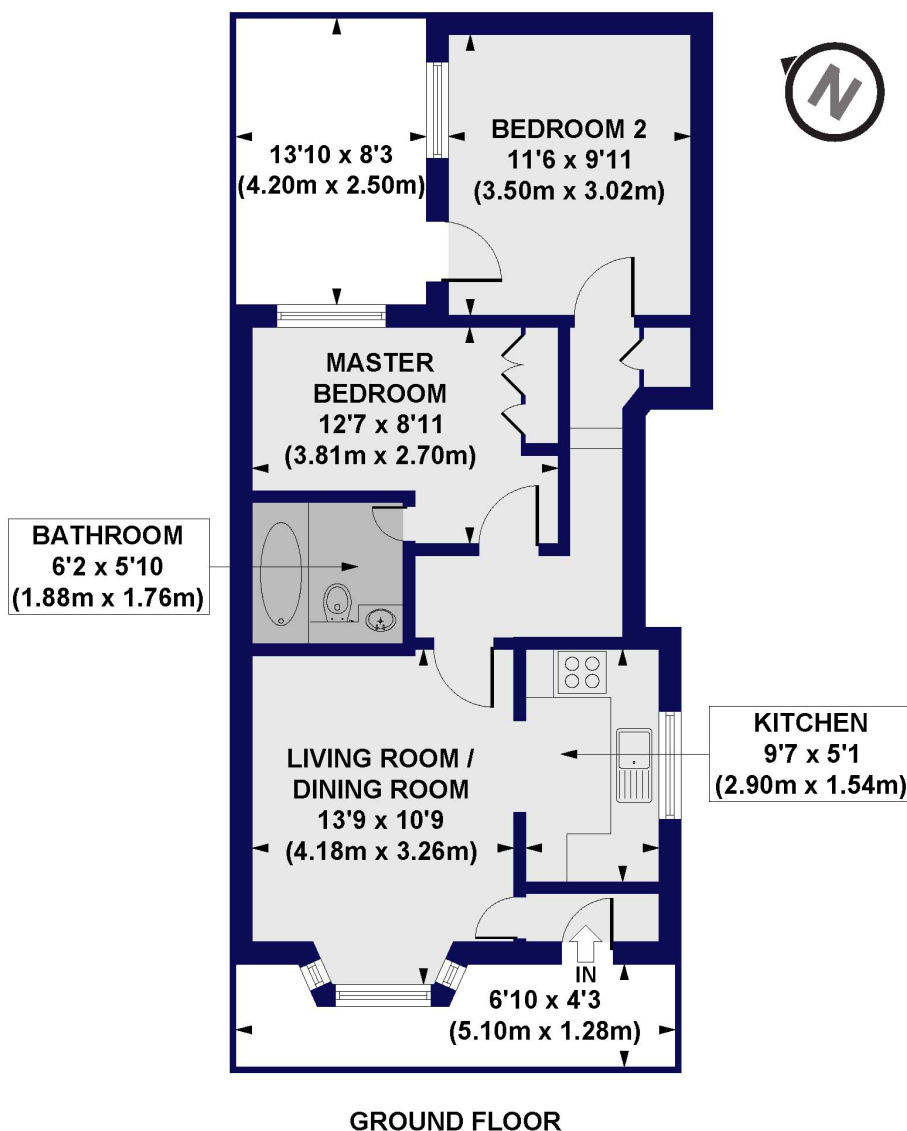
Winkworth



Winkworth

Elfort Road, N5

Approx. Gross Internal Floor Area 533 sq. ft / 49.56 sq. m



This floorplan is for illustration purposes only and is not to scale. The position and size of doors, windows, appliances and other features are approximate.

Hackney | 020 8986 4216 | hackney@winkworth.co.uk



winkworth.co.uk

See things differently

Winkworth wishes to inform prospective buyers and tenants that these particulars are a guide and act as information only. All our details are given in good faith and believed to be correct at the time of printing but they don't form part of an offer or contract. No Winkworth employee has authority to make or give any representation or warranty in relation to this property. All fixtures and fittings, whether fitted or not are deemed removable by the vendor unless stated otherwise and room sizes are measured between internal wall surfaces, including furnishings.