



**HONEYFIELD MEWS, LONDON, SE23**  
**£700,000 FREEHOLD**

Welcome to this delightful 3-bedroom home, offering the perfect combination of comfortable living and outdoor enjoyment. Nestled in a desirable location, this property features a spacious kitchen diner, a separate living room, and a charming garden studio that adds versatility to the home.

**Winkworth**

Forest Hill | [foresthill@winkworth.co.uk](mailto:foresthill@winkworth.co.uk)

for every step...

[winkworth.co.uk](http://winkworth.co.uk)





### DESCRIPTION:

With great transport links, local amenities, and a warm, welcoming community, this home is an ideal choice for those seeking both functionality and tranquillity. Don't miss your chance to experience the charm and potential of this wonderful property.



**Winkworth**

for every step...





**Winkworth**

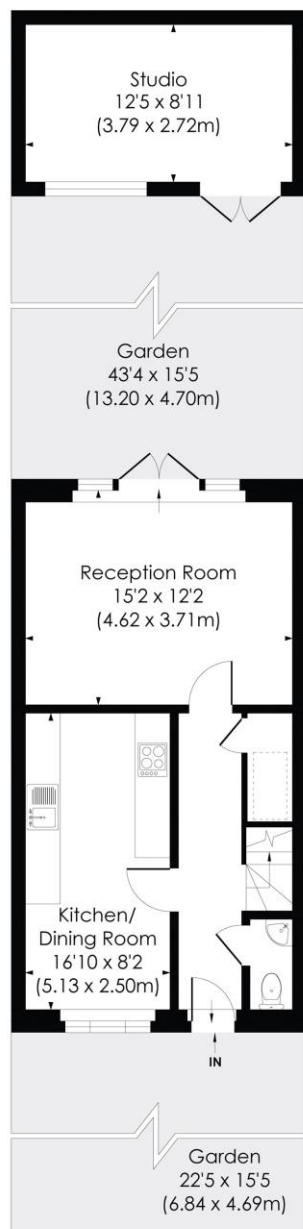
for every step...

## HONEYFIELD MEWS, SE23

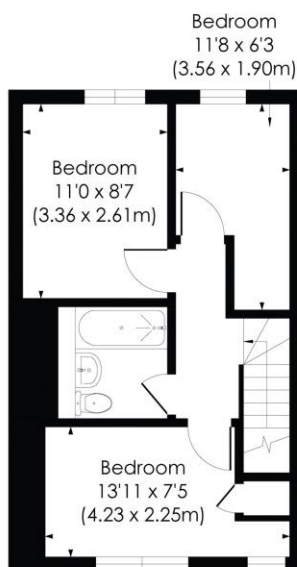
Approx. Gross Internal Floor Area

**826 Sq. ft/76.77 Sq. m**

**Studio: 111 Sq. ft/10.30 Sq. m**



GROUND FLOOR



FIRST FLOOR



**pixangle**  
PROPERTY MARKETING

This floor plan has been prepared for the purpose of illustration only in accordance with the latest RICS code of measuring practice and is not to scale. All measurements and areas are approximate and whilst every effort has been made to ensure the accuracy of the plan contained here, no responsibility is taken for any error, omission or misstatement.

© Pixangle Property Marketing Ltd. info@pixangle.com Tel: 0208 870 2118

This floorplan is for illustration purposes only and is not to scale. The position and size of doors, windows, appliances and other features are approximate.

**COUNCIL TAX BAND- D**

**LOCAL AUTHORITY - Lewisham**

**TENURE- Freehold**

**SERVICES: Mains Electric, Gas, Drainage & Water.**

**BROADBAND: Ultrafast, Superfast & Standard Broadband Available. Checked on Openreach Feb 2025.**

**MOBILE SIGNAL: You are likely to have good voice coverage with most mobile providers, you are likely to have limited data coverage with some providers**

**HEATING: Gas Central Heating**

Forest Hill | | foresthill@winkworth.co.uk

**Winkworth**

for every step...

[winkworth.co.uk](http://winkworth.co.uk)

Winkworth wishes to inform prospective buyers and tenants that these particulars are a guide and act as information only. All our details are given in good faith and believed to be correct at the time of printing but they don't form part of an offer or contract. No Winkworth employee has authority to make or give any representation or warranty in relation to this property. All fixtures and fittings, whether fitted or not are deemed removable by the vendor unless stated otherwise and room sizes are measured between internal wall surfaces, including furnishings.