



ST JOHN'S WOOD TERRACE, NW8 £4,650,000 FREEHOLD

On the market for the first time in 40 years, a rare opportunity to purchase this linked-detached house (3626 sq ft/337 sq m) situated on this prominent corner on the favoured East side of St John's Wood. Currently arranged as four self-contained flats, this non-listed house would lend itself as a rental investment or converted to larger units (subject to the necessary consents).

St John's Wood Terrace is a popular tree lined street adjacent to St John's Wood High Street with its array of cafes, restaurants and 0.3 miles from St John's Wood Underground Station (Jubilee Line), 0.5 miles to Regents Park and 0.5 miles to The American School.

Winkworth

for every step...

winkworth.co.uk/st-johns-wood



96 St John's Wood Terrace London NW8 6PP

Lower Ground Floor
GROSS INTERNAL FLOOR AREA
APPROX. 86.57 SQ M / 932 SQ FT



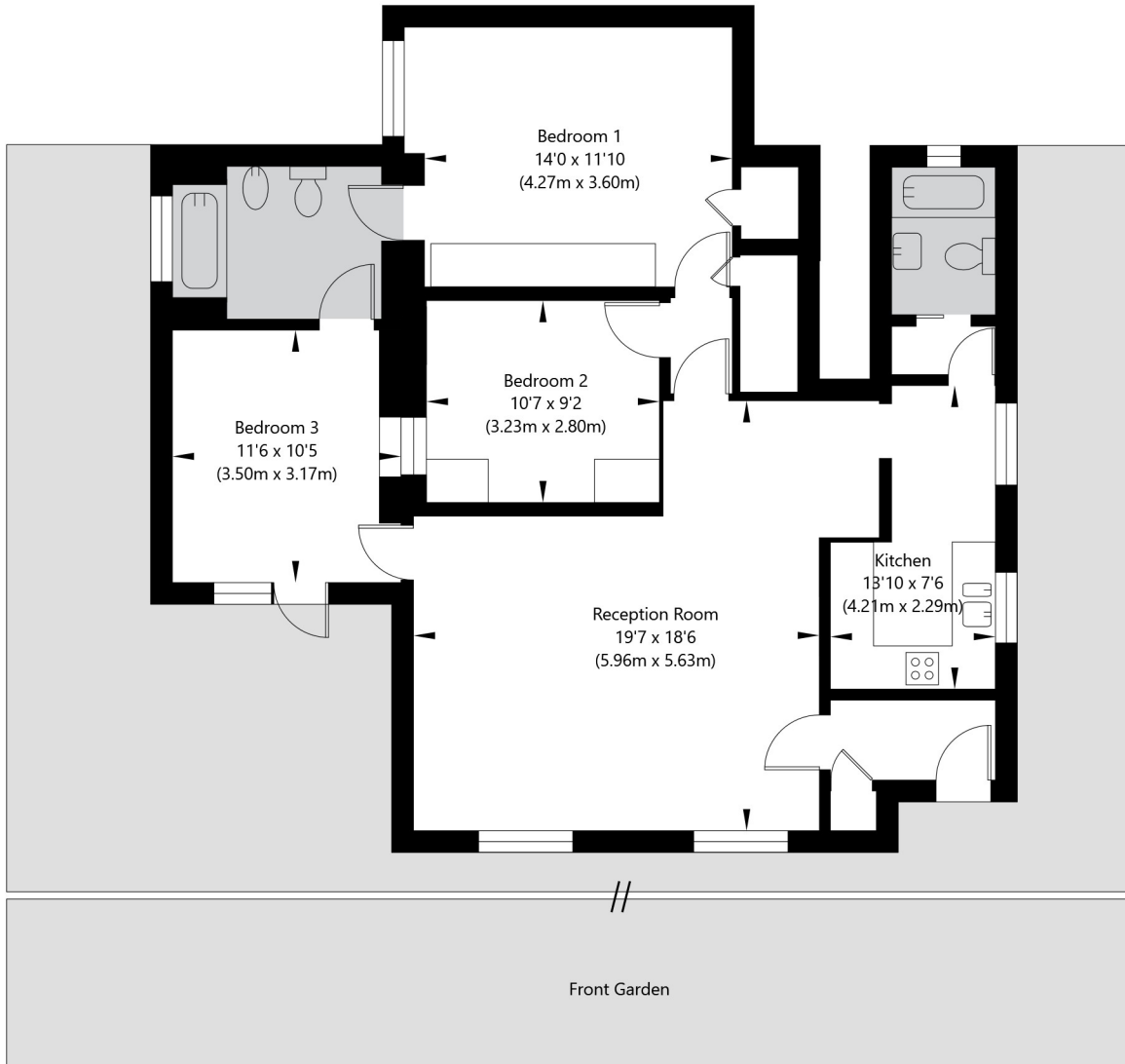
APPROXIMATE GROSS INTERNAL FLOOR AREA 86.57 SQ M / 932 SQ FT
THIS FLOOR PLAN IS FOR ILLUSTRATIVE PURPOSES ONLY AND
SHOULD BE USED FOR THIS PURPOSE BY PROSPECTIVE APPLICANTS AS ITS NOT TO SCALE.

(c) AMBERSHORE PIX LIMITED / PHOTO - VIDEO - FLOOR PLANS / 0800 999 1577 / WWW.AMERSHOREPIX.CO.UK

96 St John's Wood Terrace London NW8 6PP



Ground Floor
GROSS INTERNAL FLOOR AREA
APPROX. 96.97 SQ M / 1044 SQ FT

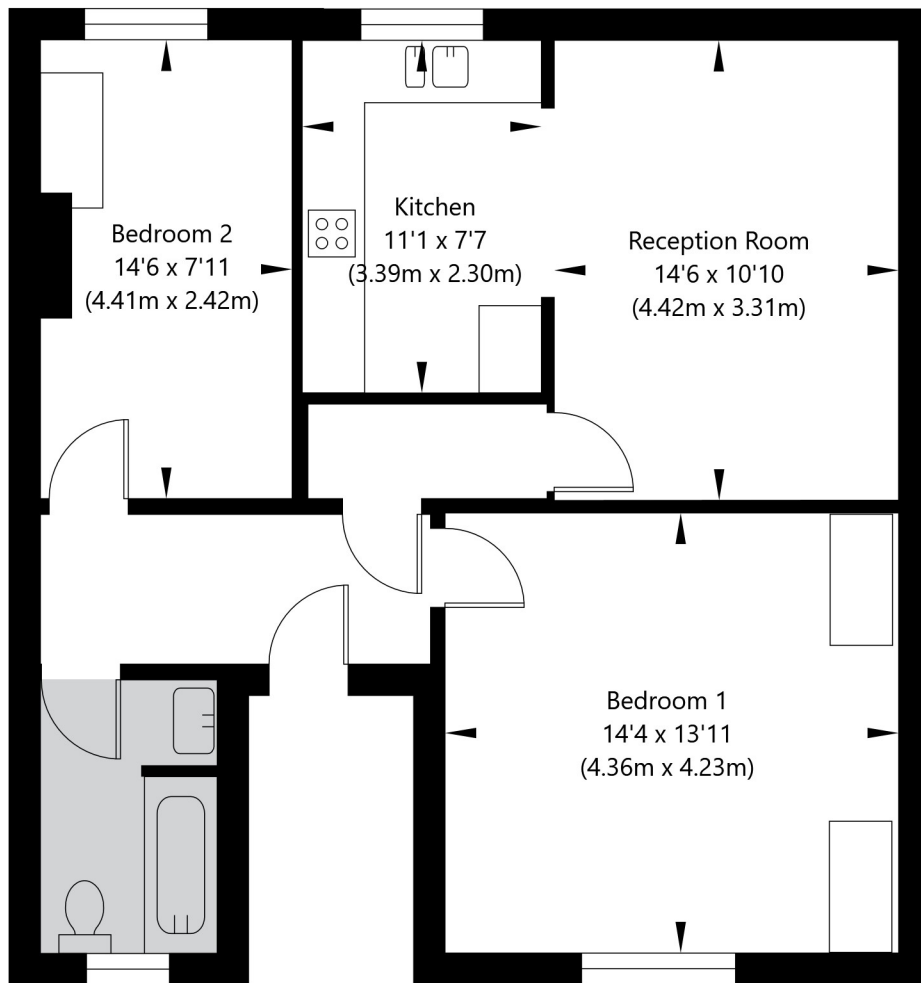


APPROXIMATE GROSS INTERNAL FLOOR AREA 96.97 SQ M / 1044 SQ FT
THIS FLOOR PLAN IS FOR ILLUSTRATIVE PURPOSES ONLY AND
SHOULD BE USED FOR THIS PURPOSE BY PROSPECTIVE APPLICANTS AS ITS NOT TO SCALE.

96 St John's Wood Terrace London NW8 6PP



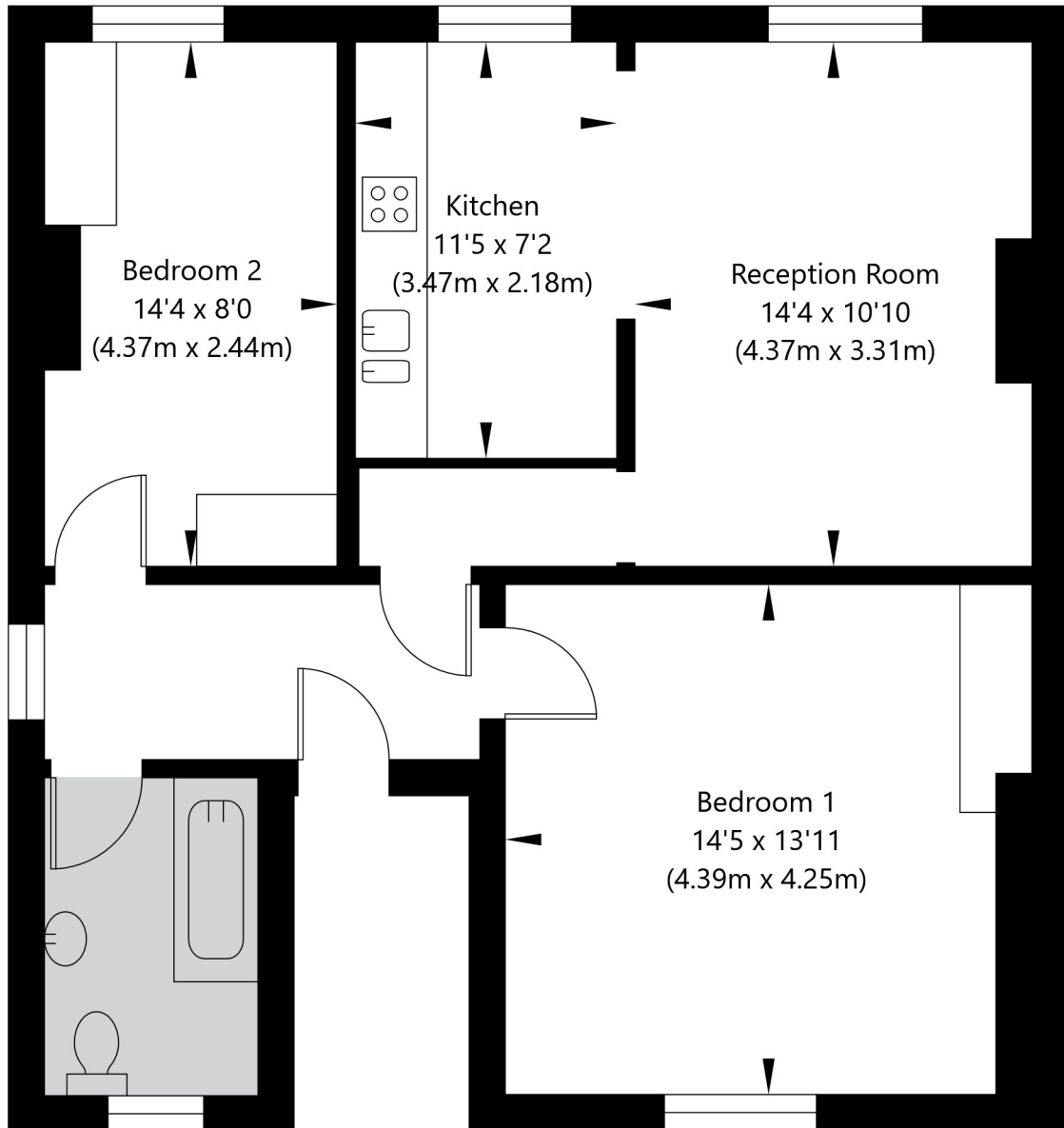
First Floor
GROSS INTERNAL FLOOR AREA
APPROX. 66.29 SQ M / 713 SQ FT



APPROXIMATE GROSS INTERNAL FLOOR AREA 66.29 SQ M / 713 SQ FT
THIS FLOOR PLAN IS FOR ILLUSTRATIVE PURPOSES ONLY AND
SHOULD BE USED FOR THIS PURPOSE BY PROSPECTIVE APPLICANTS AS ITS NOT TO SCALE.

96 St John's Wood Terrace London NW8 6PP

Second Floor
GROSS INTERNAL FLOOR AREA
APPROX. 66.45 SQ M / 715 SQ FT



APPROXIMATE GROSS INTERNAL FLOOR AREA 66.45 SQ M / 715 SQ FT
THIS FLOOR PLAN IS FOR ILLUSTRATIVE PURPOSES ONLY AND
SHOULD BE USED FOR THIS PURPOSE BY PROSPECTIVE APPLICANTS AS ITS NOT TO SCALE.

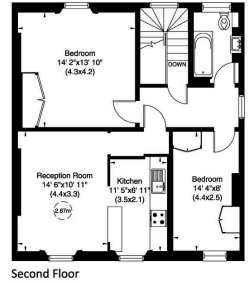
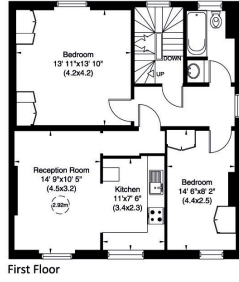
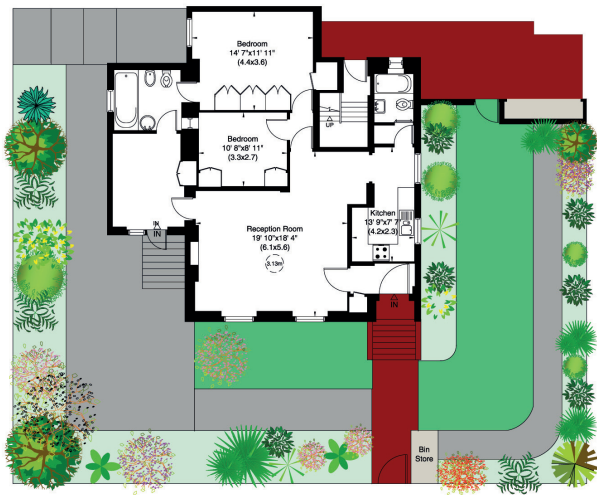
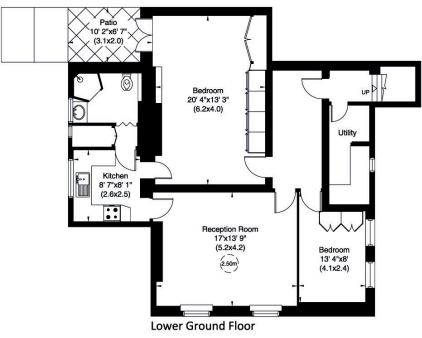
96 Saint John's Wood Terrace, NW8

Gross internal area (approx.)

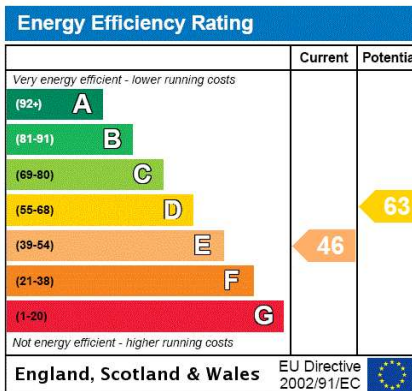
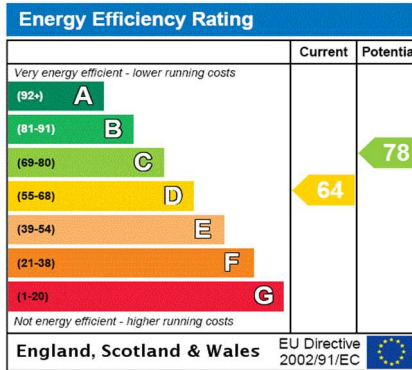
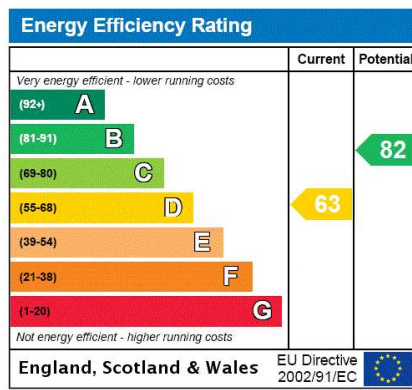
337 Sq m (3626 Sq ft)

For identification only, Not to Scale

capital.020 8871 7722



Not to scale, for guidance only and must not be relied upon as a statement of fact. All measurements and areas are approximate only (and have been prepared in accordance with the current edition of the RICS Code of Measuring Practice).



Tenure: Freehold

Council Tax Band: F

Where no figures are shown, we have been unable to ascertain the information. All figures that are shown were correct at the time of printing.

Where no figures are shown, we have been unable to ascertain the information. All figures that are shown were correct at the time of printing.

These particulars are not an offer or contract, nor part of one. You should not rely on statements by Winkworth in the particulars or by word of mouth or in writing "information" as being factually accurate about the property, its condition or its value. Winkworth does not have any authority to make any representations about the property, and accordingly any information given is entirely without responsibility on the part of the agents, seller(s) or lessor(s). These particulars are prepared on the basis of the information supplied by our client and are a rough guide for information only. The photographs show only certain parts of the property. We are not able to check all of the information and therefore are unable to guarantee accuracy. All interested parties are therefore advised to undertake all necessary inspections and checks that they deem appropriate. Where displayed, the square footage is taken from the floor plans, which are created by an independent supplier. These measurements are approximate and included for illustrative purposes only. The measurements may vary. Winkworth does not make any representation as to the accuracy of these measurements and you should seek to verify them for yourself. Winkworth accept no liability for any loss you may suffer if you rely on these measurements. All fixtures and fittings, whether fitted or not are deemed removable by the vendor unless stated. Any reference to alterations to, or use of, any part of the property does not mean that any necessary planning, building regulations or other consent has been obtained. Amenities and appliances have not been tested

St John's Wood | 103-104 St. Johns Wood Terrace, London, NW8 6PL | 020 7586 7001 |



for every step...

winkworth.co.uk/st-johns-wood

Winkworth wishes to inform prospective buyers and tenants that these particulars are a guide and act as information only. All our details are given in good faith and believed to be correct at the time of printing but they don't form part of an offer or contract. No Winkworth employee has authority to make or give any representation or warranty in relation to this property. All fixtures and fittings, whether fitted or not are deemed removable by the vendor unless stated otherwise and room sizes are measured between internal wall surfaces, including furnishings.