



LATIMER ROAD, W10  
£1,200,000 FREEHOLD

# SUPURB THREE BEDROOM FAMILY HOME CLOSE TO THE OPEN SPACES OF LITTLE WORMWOOD SCRUBS

North Kensington | 020 7792 5000 | northkensington@winkworth.co.uk

**Winkworth**

for every step...

*winkworth.co.uk*



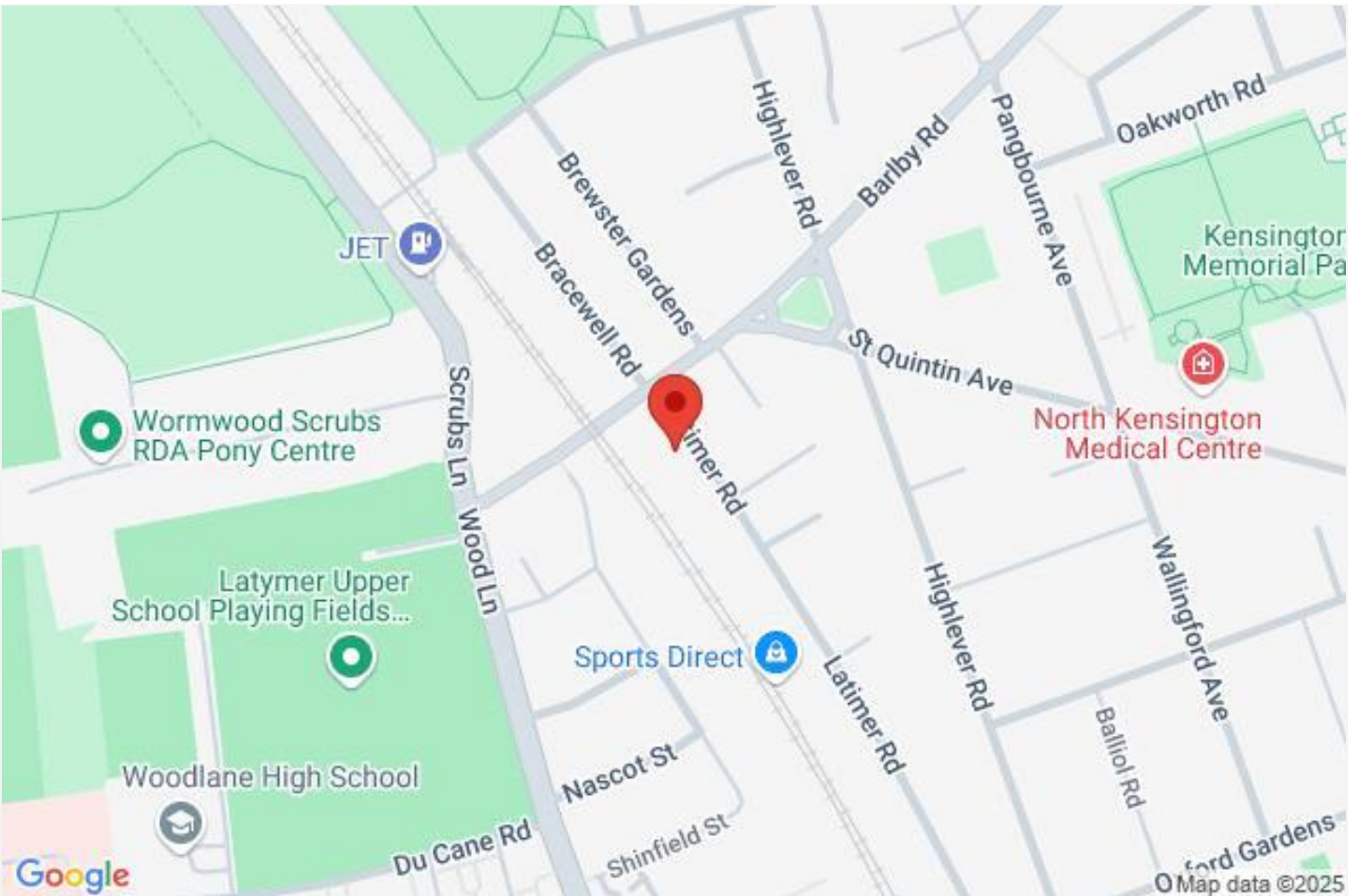
## DESCRIPTION:

A beautiful Victorian terraced house spread across three floors. This bright and spacious three bedroom house comprises of a large double reception/dining room leading on to a fabulous eat-in kitchen, creating a light and engaging entertaining or family area. The property further benefits from a downstairs WC. Upstairs on the first floor are two large double bedrooms, and a large bathroom with separate bath and walk-in shower. The loft has been converted into a spacious third bedroom boasting large windows for all day sunlight. The property benefits from a stunning west facing garden, perfect for summer entertaining with space for children to play, A perfect family home. Latimer Road is a desirable street in the heart of North Kensington (K&C borough) and is within easy reach of Portobello, Golborne Road and Westfield Shopping centre including White City House, whilst being a short stroll away from the open spaces on Wormwood Scrubs Park and Latimer Road underground station for the Hammersmith, City and Circle Lines. The A40 is also easily accessed for routes in and out of London.

## AT A GLANCE

- Beautiful Victorian House
- Three Double Bedrooms
- Large Open Living Room
- Open Kitchen/Dining Room
- High Ceilings
- Fantastic West Facing
- Garden
- Great Location
- Plenty Of Storage
- Stylish Decor



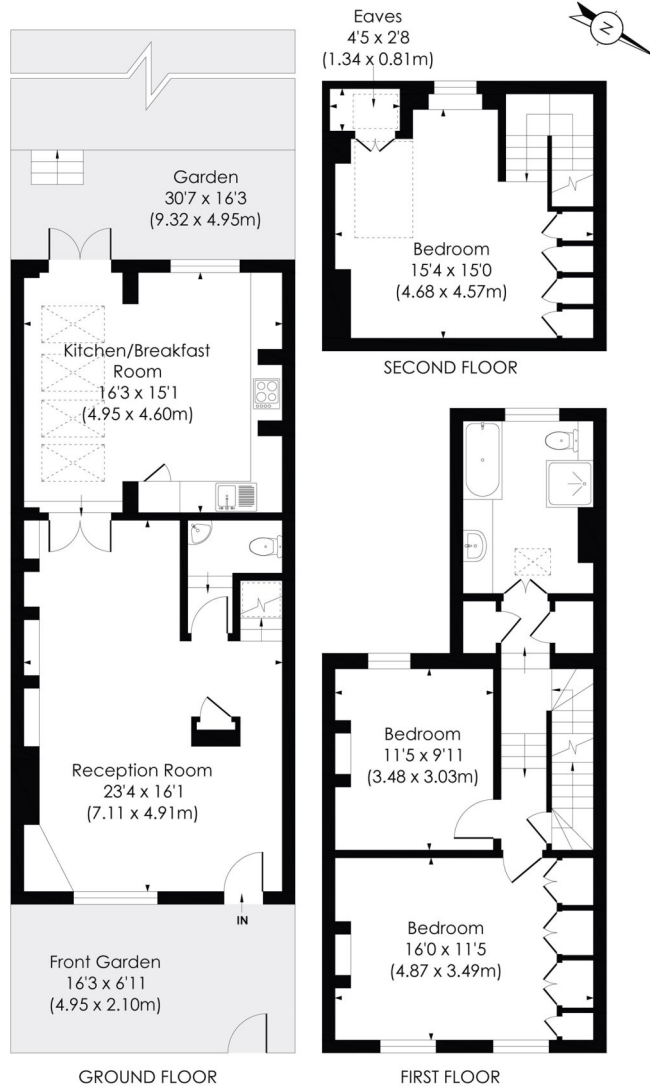


## LATIMER ROAD, W10

Approx. Gross Internal Floor Area

**1374 Sq. ft/127.66 Sq. m**

(including eaves)

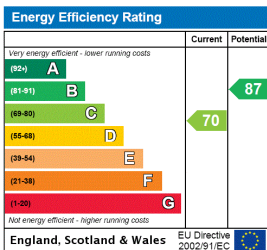


© Pixangle Property Marketing Ltd. info@pixangle.com Tel: 0208 870 2118

pixangle  
PROPERTY MARKETING

This floor plan has been prepared for the purpose of illustration only in accordance with the latest RICS code of measuring practice and is not to scale. All measurements and areas are approximate and whilst every effort has been made to ensure the accuracy of the plan contained here, no responsibility is taken for any error, omission or misstatement.

This floorplan is for illustration purposes only and is not to scale. The position and size of doors, windows, appliances and other features are approximate.



Tenure: Freehold

Council Tax Band: RBKC Band E

North Kensington | 020 7792 5000 | northkensington@winkworth.co.uk

**Winkworth**

for every step...

winkworth.co.uk

Winkworth wishes to inform prospective buyers and tenants that these particulars are a guide and act as information only. All our details are given in good faith and believed to be correct at the time of printing but they don't form part of an offer or contract. No Winkworth employee has authority to make or give any representation or warranty in relation to this property. All fixtures and fittings, whether fitted or not are deemed removable by the vendor unless stated otherwise and room sizes are measured between internal wall surfaces, including furnishings.