



LORNE STREET, BERKSHIRE, RG1 7YW
£750 PER MONTH FURNISHED

A GROUND FLOOR, ONE BEDROOM APARTMENT
CONVENIENTLY LOCATED FOR AMENITIES, THE
STATION AND READING TOWN CENTRE.

Reading | 0118 4022 300 | reading@winkworth.co.uk

Winkworth

for every step...

winkworth.co.uk

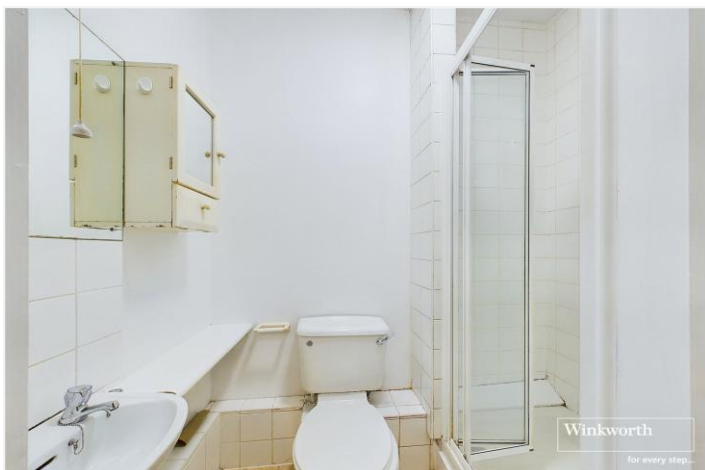


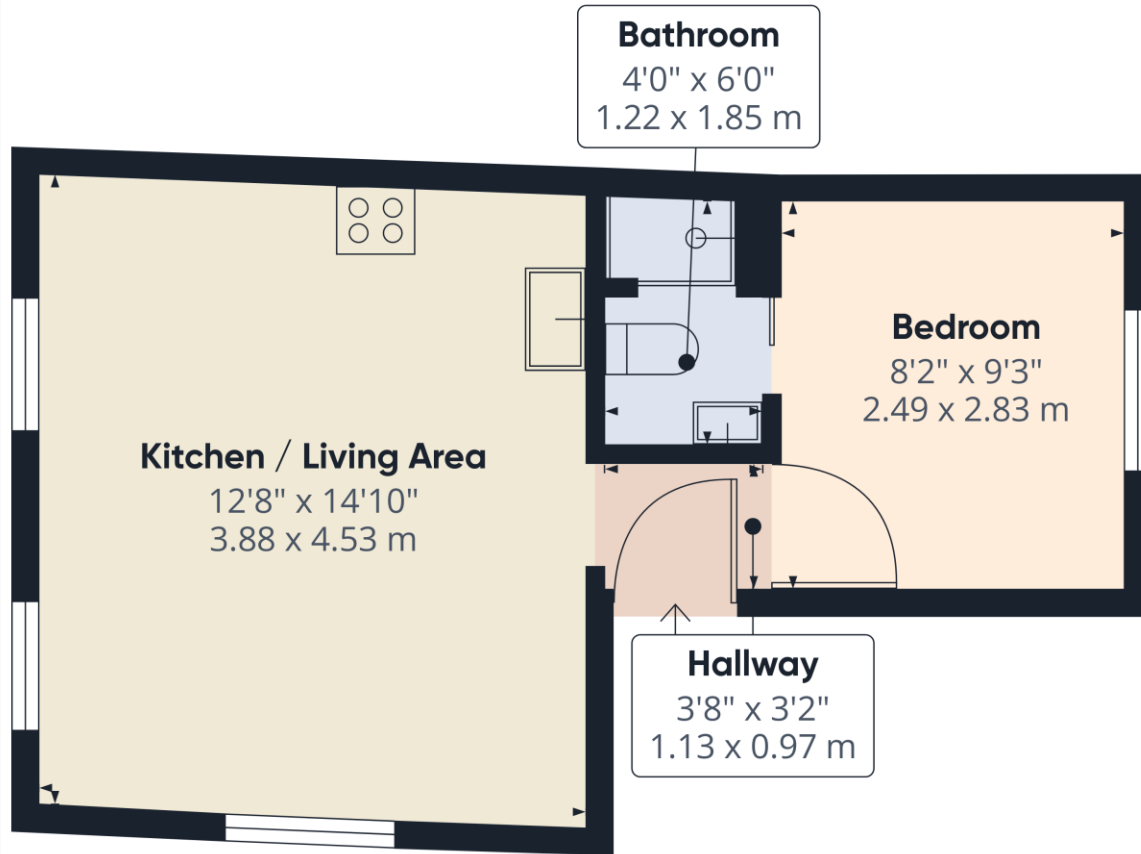
DESCRIPTION:

Ground floor one-bedroom apartment, located in a popular residential area, conveniently located for local amenities and within one mile of Reading station. The apartment comprises; a dual aspect and open-plan living area/ kitchen with appliances, one double bedroom leading to the shower room. (No parking). Furnished. Available Now.

AT A GLANCE

- Ground Floor Flat
- One Double Bedroom
- Within One Mile of Reading Station
- Council tax band A
- Open-Plan Living Accommodation
- No Parking
- Furnished
- Available Now





Approximate total area⁽¹⁾
304.95 ft²
28.33 m²

(1) Excluding balconies and terraces

While every attempt has been made to ensure accuracy, all measurements are approximate, not to scale. This floor plan is for illustrative purposes only.
Calculations are based on RICS IPMS 3C standard.

GIRAFFE360

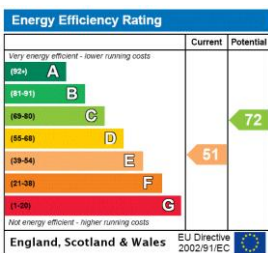
This floorplan is for illustration purposes only and is not to scale. The position and size of doors, windows, appliances and other features are approximate.

Deposit: £865.38

Holding Deposit: £173.07

Council Tax Band: A

Where no figures are shown, we have been unable to ascertain the information. All figures that are shown were correct at the time of printing.



Reading | 0118 4022 300 | reading@winkworth.co.uk



for every step...

winkworth.co.uk

Winkworth wishes to inform prospective buyers and tenants that these particulars are a guide and act as information only. All our details are given in good faith and believed to be correct at the time of printing but they don't form part of an offer or contract. No Winkworth employee has authority to make or give any representation or warranty in relation to this property. All fixtures and fittings, whether fitted or not are deemed removable by the vendor unless stated otherwise and room sizes are measured between internal wall surfaces, including furnishings.