



Elvaston Place, South Kensington, London, SW7

£895 per week* / £3,878.33 per month – Unfurnished

A stunning raised ground floor apartment featuring two bedrooms within an elegant stucco-fronted building.

2 Bedrooms | 1 Reception Room | 2 Bathrooms | Raised Ground Floor Flat | 851 Approx sq ft | EPC: D

APPLICANT FEES MAY BE APPLICABLE
DEPOSIT OF 5 WEEKS' RENT
HOLDING DEPOSIT OF 1 WEEK'S RENT

Winkworth

winkworth.co.uk

for every step...



DESCRIPTION

This spacious property boasts impressive ceiling heights and generous storage throughout. The well-proportioned layout includes a bright and airy reception room, separate kitchen, master bedroom with private bathroom, and a versatile second bedroom or study complemented by an additional shower room. Ideally situated just moments from Hyde Park, offering a perfect location for enjoying London's premier green space.

The property is available immediately on an unfurnished basis.

ACCOMMODATION

2 Bedrooms, 1 Reception Room, 2 Bathrooms,
Raised Ground Floor Flat, Unfurnished,
851 Approx Sq ft

COUNCIL TAX BAND

Band F

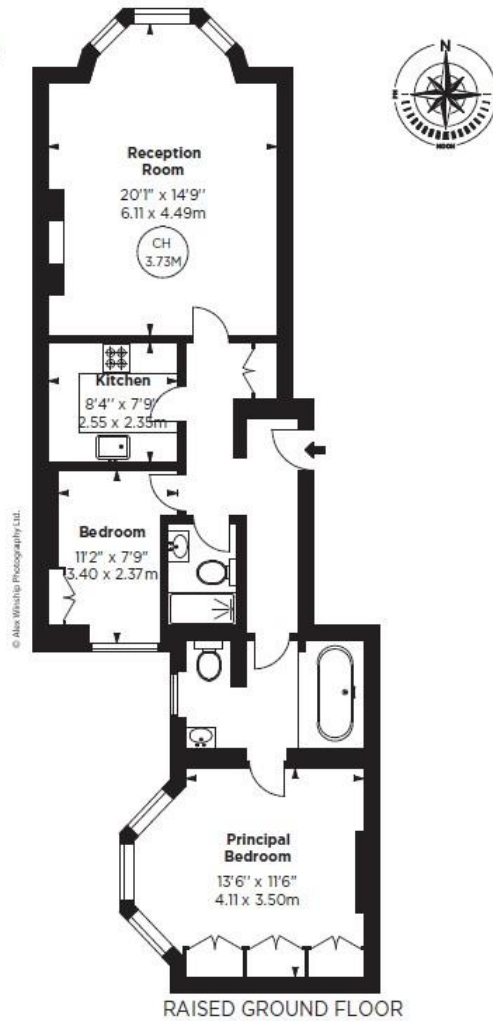


Elvaston Place, SW7

APPROX. GROSS INTERNAL AREA *
851 Sq Ft - 79.06 Sq M

This floorplan is for GUIDANCE ONLY and NOT FOR VALUATION purposes.

Key :
CH - Ceiling Height



ALEX WINSHIP
Photography

*Floorplan for guidance only and is not to scale or valuation purposes. It does not constitute a guarantee or representation of fact. All measurements and areas are approximate and have been prepared by computer using the current edition of the BS3 Code of Measuring Practice.



Energy Efficiency Rating

	Current	Potential
Very energy efficient - lower running costs		
(92+) A		
(81-91) B		
(69-80) C		78
(55-68) D	63	
(39-54) E		
(21-38) F		
(1-20) G		
Not energy efficient - higher running costs		
England, Scotland & Wales	EU Directive 2002/91/EC	

This floorplan is for illustration purposes only and is not to scale. The position and size of doors, windows, appliances and other features are approximate.

*Please note, the rent cannot be paid on a weekly basis

South Kensington Lettings | 020 7370 6767 | lettings.southken@winkworth.co.uk

Winkworth

winkworth.co.uk

for every step...

Winkworth wishes to inform prospective buyers and tenants that these particulars are a guide and act as information only. All our details are given in good faith and believed to be correct at the time of printing but they don't form part of an offer or contract. No Winkworth employee has authority to make or give any representation or warranty in relation to this property. All fixtures and fittings, whether fitted or not are deemed removable by the vendor unless stated otherwise and room sizes are measured between internal wall surfaces, including furnishings.