

HANOVER ROAD, NW10  
**£2,900 PER MONTH**

## NEWLY RENOVATED THREE BEDROOM, THREE BATHROOM SPLIT LEVEL APARTMENT AVAILABLE TO LET

Kensal Rise & Queens Park | 0208 960 4947 | [kensalrise@winkworth.co.uk](mailto:kensalrise@winkworth.co.uk)

**Winkworth**

for every step...

[winkworth.co.uk](http://winkworth.co.uk)



**DESCRIPTION:**

Winkworth are delighted to offer this spacious apartment which is split over the first and second floor.

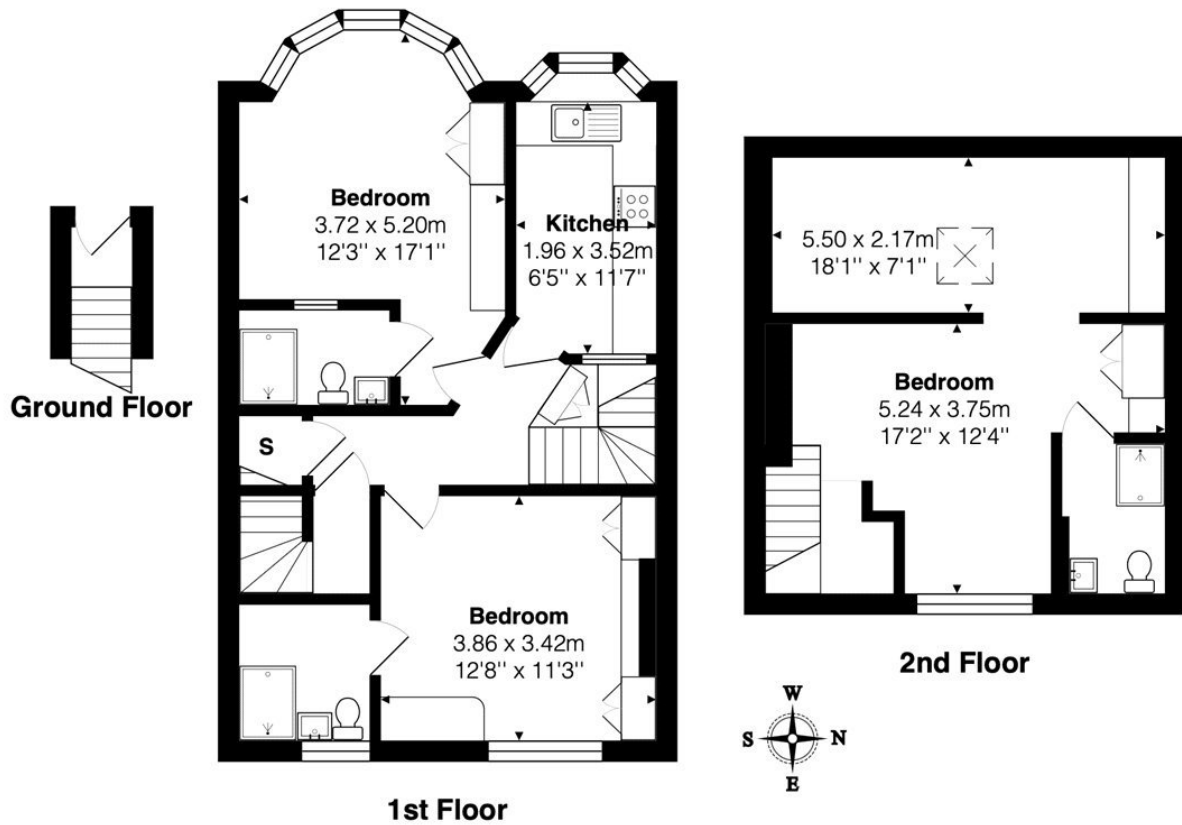
Following a recent refurbishment and comprises of three double bedrooms, each with their own en-suite, a newly renovated eat-in kitchen with breakfast bar and all new appliances

The property benefits from a mixture of wooden floors and newly laid carpet on the stairwell.

Each of the three bedrooms has its own desk, built in wardrobes, double bed and new mattress.

Offered furnished and available now.





Total Area: 90.3 m<sup>2</sup> ... 972 ft<sup>2</sup>  
 All measurements are approximate and for display purposes only

This floorplan is for illustration purposes only and is not to scale. The position and size of doors, windows, appliances and other features are approximate.

Energy Efficiency Rating	
	Potential
Very energy efficient - lower running costs	
(92+) <b>A</b>	
(81-91) <b>B</b>	
(69-80) <b>C</b>	75
(55-68) <b>D</b>	59
(39-54) <b>E</b>	
(21-38) <b>F</b>	
(1-20) <b>G</b>	
Not energy efficient - higher running costs	
England, Scotland & Wales	EU Directive 2002/91/EC

**Deposit:** 5 weeks rent

**Holding Deposit:** 1 weeks rent

**Council Tax Band:** D

Where no figures are shown, we have been unable to ascertain the information. All figures that are shown were correct at the time of printing.



for every step...

Kensal Rise & Queens Park | 0208 960 4947 | kensalrise@winkworth.co.uk

winkworth.co.uk

Winkworth wishes to inform prospective buyers and tenants that these particulars are a guide and act as information only. All our details are given in good faith and believed to be correct at the time of printing but they don't form part of an offer or contract. No Winkworth employee has authority to make or give any representation or warranty in relation to this property. All fixtures and fittings, whether fitted or not are deemed removable by the vendor unless stated otherwise and room sizes are measured between internal wall surfaces, including furnishings.