



WESTBOURNE ROAD, LONDON, N7
£829,999 SHARE OF FREEHOLD

A WONDERFUL THREE BEDROOM APARTMENT WITH A PRIVATE GARDEN

Islington | 0207 354 2480 | islington@winkworth.co.uk

Winkworth

winkworth.co.uk

See things differently



DESCRIPTION:

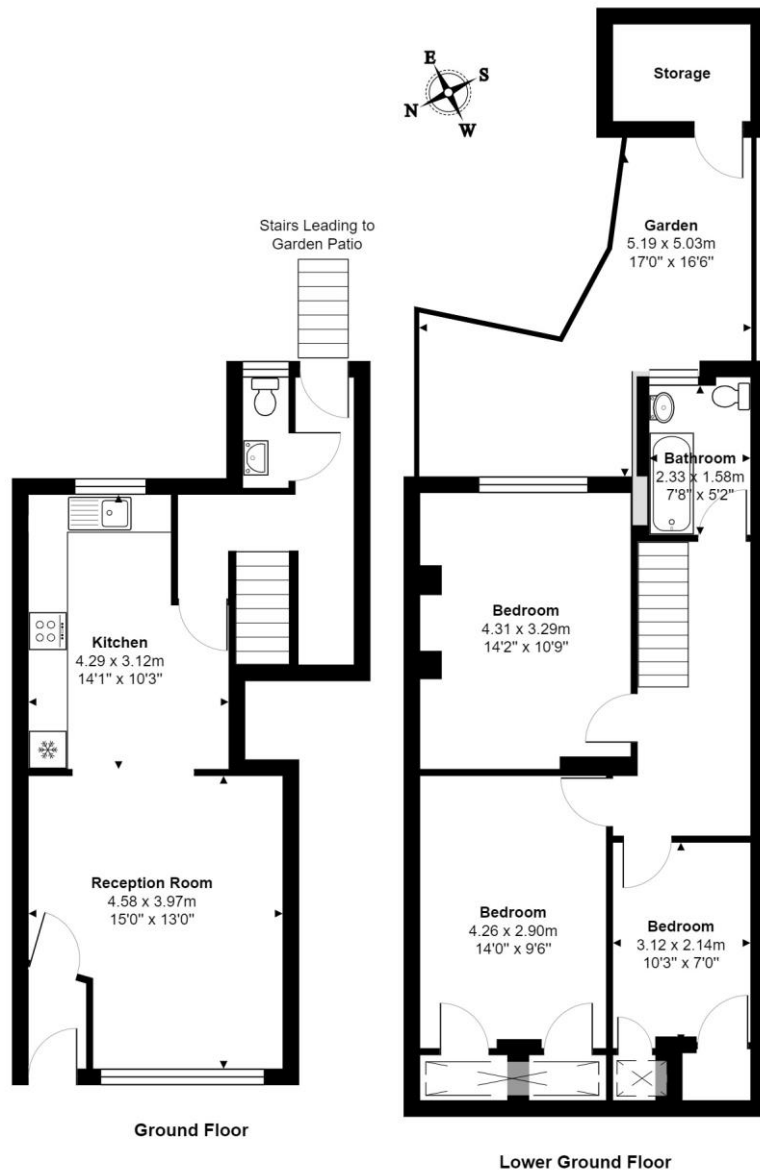
Spanning 980sqft across the ground and lower ground floors is this spacious three bedroom garden flat in Islington. Accommodation consists of a semi open plan reception room and kitchen on the ground floor, both are flooded with natural light and benefit from wonderful high ceilings and sash windows. As you move downstairs you will find a w/c on the landing as well as access to a private landscaped garden. On the basement level is the generous master bedroom with inbuilt storage, two further double bedrooms and a family bathroom. The property further benefits from its own front door, a share of the freehold and is being offered to the market chain free.

The property is perfectly located on Westbourne Road and is perfectly set for the bars, restaurants and shops on Upper Street. The green spaces of St Mary Magdalene Garden and Highbury Fields are close by as are a fantastic selection of transport links. Highbury and Islington station provides the closest Underground and Overground links on the Victoria line whilst Caledonian road is serviced by the Piccadilly line. Drayton Park station is just moments away and provides a weekday service to Moorgate whilst various bus routes offer effortless links to Angel, the City and West End. Kings Cross is easily accessed as are international services from St Pancras.

Winkworth



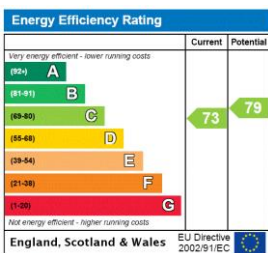
Winkworth



Total Area 91.0 m² ... 980 ft² (excluding garden, storage)

All measurements are approximate and for display purposes only

This floorplan is for illustration purposes only and is not to scale. The position and size of doors, windows, appliances and other features are approximate.



Islington | 0207 354 2480 | islington@winkworth.co.uk



winkworth.co.uk

See things differently

Winkworth wishes to inform prospective buyers and tenants that these particulars are a guide and act as information only. All our details are given in good faith and believed to be correct at the time of printing but they don't form part of an offer or contract. No Winkworth employee has authority to make or give any representation or warranty in relation to this property. All fixtures and fittings, whether fitted or not are deemed removable by the vendor unless stated otherwise and room sizes are measured between internal wall surfaces, including furnishings.