



ARCHEL ROAD, W14
£2,000 PER MONTH UNFURNISHED

A beautifully presented and newly renovated one bedroom garden flat set within a handsome Victorian terrace close to the amenities and transport links of Barons Court and West Kensington.

Fulham & Parsons Green | 020 7731 3388 | fulham@winkworth.co.uk

Winkworth

for every step...

winkworth.co.uk



The property benefits from an open-plan kitchen/reception room with doors leading out to a courtyard garden. There is a large double bedroom which is served by an ensuite shower-room.

The property would make the perfect home for either a couple or a single professional.

Archel Road is a quiet residential street, conveniently located for the famous Queens Tennis Club, and the local amenities within Barons Court, including the award winning butchers HG Walters, and artisan coffee shops.

It is well positioned for the transport links at West Kensington which is 0.3 miles away, West Brompton is 0.4 miles away and Barons Court Underground stations which is 0.6 miles away, offering District, Overground and Piccadilly Line services. Please note these distances are approximates.

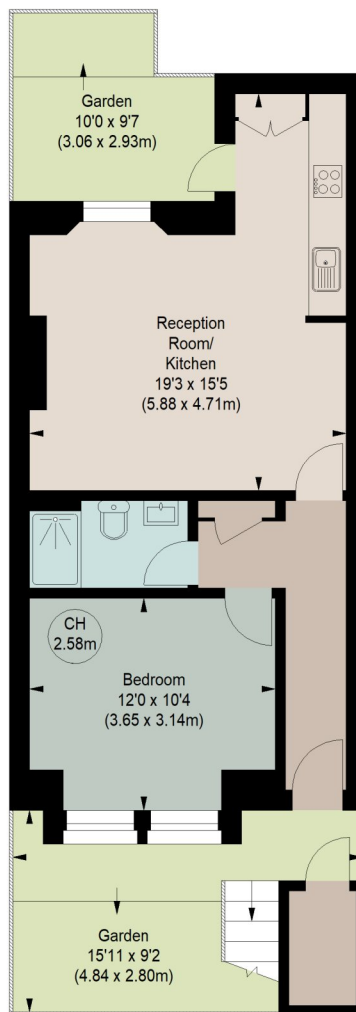
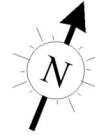




ARCHEL ROAD, SW6

Approximate gross internal area
460 sq ft / 42.73 sq m

Key :
CH - Ceiling Height



GROUND FLOOR

The floor plan is not to scale and measurements and areas shown are approximate and therefore should be used for illustrative purposes only. The plan has been prepared in accordance with the RICS code of Measuring Practice and whilst we have confidence in the information produced, it must not be relied on. If there is any aspect of particular importance, you should carry out or commission your own inspection of the property.

This floorplan is for illustration purposes only and is not to scale. The position and size of doors, windows, appliances and other features are approximate.

Fulham & Parsons Green | 020 7731 3388 | fulham@winkworth.co.uk

Winkworth

for every step...

winkworth.co.uk

Winkworth wishes to inform prospective buyers and tenants that these particulars are a guide and act as information only. All our details are given in good faith and believed to be correct at the time of printing but they don't form part of an offer or contract. No Winkworth employee has authority to make or give any representation or warranty in relation to this property. All fixtures and fittings, whether fitted or not are deemed removable by the vendor unless stated otherwise and room sizes are measured between internal wall surfaces, including furnishings.