



ABERCORN WALK, NW8 £1,550,000 FREEHOLD

An impressively presented and bright Semi-detached regency style two bedroom house set in this exclusive secure gated development. The house is arranged over two floors and consists of two double bedrooms both with en-suite; one shower room and one bathroom. The house further benefits from Smart lighting inside and outside the house (Philips Hue) with Sonos system in the living room.

Abercorn walk is situated within 0.5 miles of the fashionable shops, cafes and transport facilities of both St John's Wood and Little Venice.

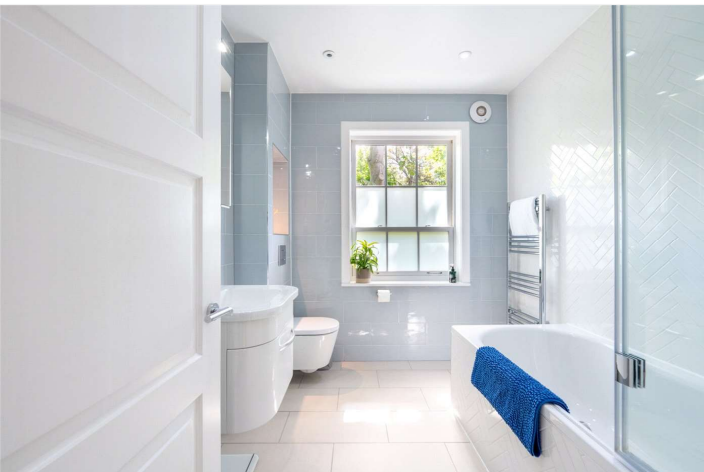
Two Bedrooms | En-Suite Shower Room | Bathroom | Reception Room | Kitchen | Front and Rear Gardens | Gated Entrance | CCTV | Parking | Close to St John's Wood and Maida Vale | Freehold

View our virtual tour here: <https://youtu.be/zDFzGYRMfIs>

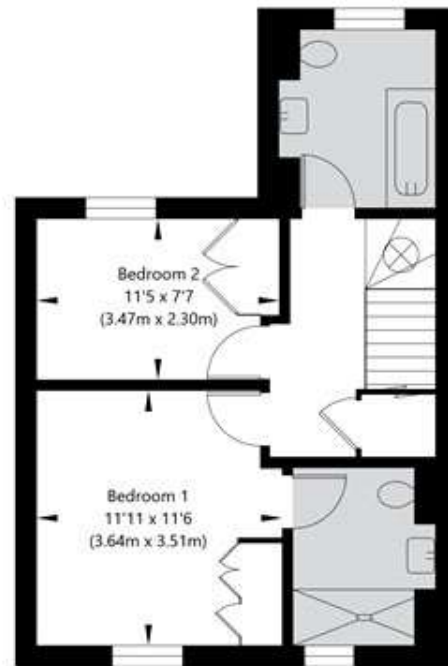
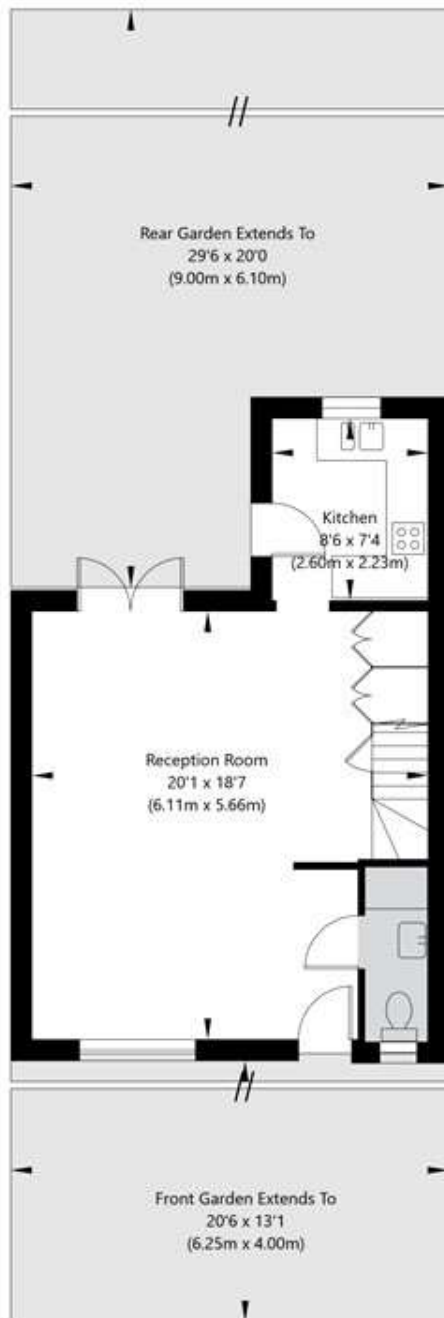
Winkworth

for every step...

[winkworth.co.uk/st-johns-wood](https://www.winkworth.co.uk/st-johns-wood)



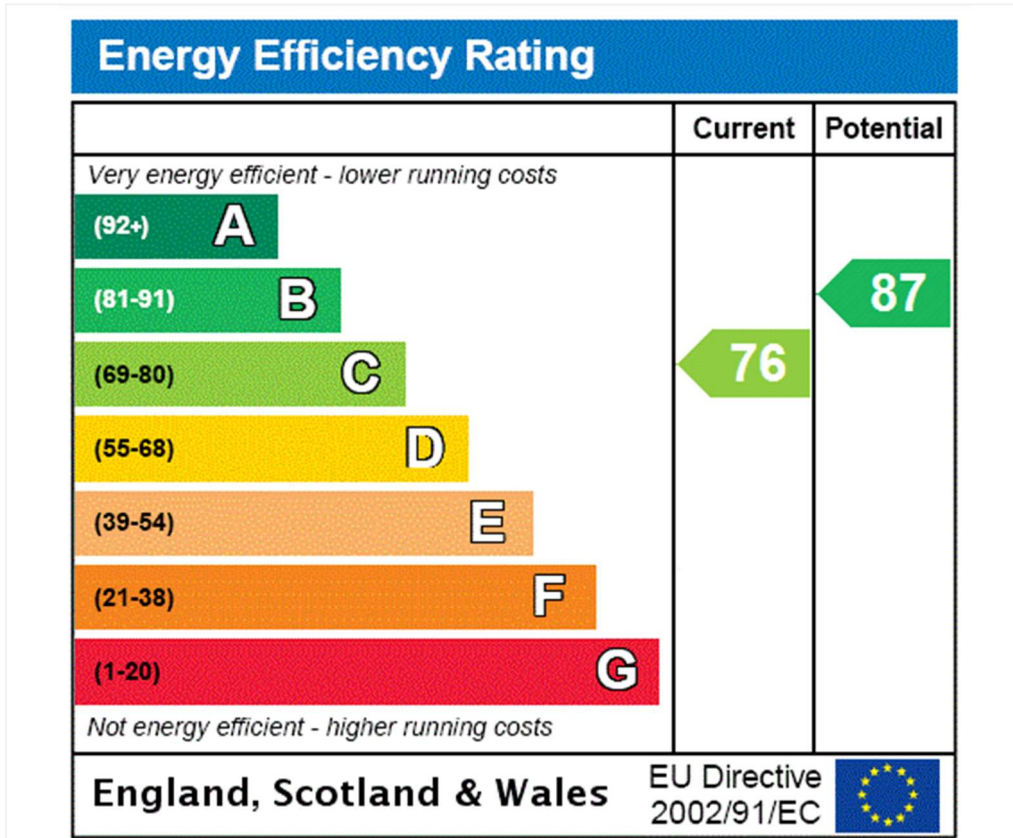
Abercorn Walk, London NW8 9XX



First Floor
GROSS INTERNAL FLOOR AREA
APPROX. 40.76 SQ M / 439 SQ FT

Ground Floor
GROSS INTERNAL FLOOR AREA
APPROX. 40.73 SQ M / 438 SQ FT

APPROXIMATE GROSS INTERNAL FLOOR AREA 81.49 SQ M / 877 SQ FT
THIS FLOOR PLAN IS FOR ILLUSTRATIVE PURPOSES ONLY AND
SHOULD BE USED FOR THIS PURPOSE BY PROSPECTIVE APPLICANTS AS ITS NOT TO SCALE.



Tenure: Freehold

Council Tax Band: G

Where no figures are shown, we have been unable to ascertain the information. All figures that are shown were correct at the time of printing.

Where no figures are shown, we have been unable to ascertain the information. All figures that are shown were correct at the time of printing. These particulars are not an offer or contract, nor part of one. You should not rely on statements by Winkworth in the particulars or by word of mouth or in writing "information" as being factually accurate about the property, its condition or its value. Winkworth does not have any authority to make any representations about the property, and accordingly any information given is entirely without responsibility on the part of the agents, seller(s) or lessor(s). These particulars are prepared on the basis of the information supplied by our client and are a rough guide for information only. The photographs show only certain parts of the property. We are not able to check all of the information and therefore are unable to guarantee accuracy. All interested parties are therefore advised to undertake all necessary inspections and checks that they deem appropriate. Where displayed, the square footage is taken from the floor plans, which are created by an independent supplier. These measurements are approximate and included for illustrative purposes only. The measurements may vary. Winkworth does not make any representation as to the accuracy of these measurements and you should seek to verify them for yourself. Winkworth accept no liability for any loss you may suffer if you rely on these measurements. All fixtures and fittings, whether fitted or not are deemed removable by the vendor unless stated. Any reference to alterations to, or use of, any part of the property does not mean that any necessary planning, building regulations or other consent has been obtained. Amenities and appliances have not been tested

St John's Wood | 103-104 St. Johns Wood Terrace, London, NW8 6PL | 020 7586 7001 |



for every step...

winkworth.co.uk/st-johns-wood

Winkworth wishes to inform prospective buyers and tenants that these particulars are a guide and act as information only. All our details are given in good faith and believed to be correct at the time of printing but they don't form part of an offer or contract. No Winkworth employee has authority to make or give any representation or warranty in relation to this property. All fixtures and fittings, whether fitted or not are deemed removable by the vendor unless stated otherwise and room sizes are measured between internal wall surfaces, including furnishings.