



VICTORIA PARK ROAD, LONDON, E9  
£1,750,000 FREEHOLD

## A STUNNING DETACHED SIX BEDROOM GEORGIAN TOWNHOUSE

Hackney | 020 8986 4216 | [hackney@winkworth.co.uk](mailto:hackney@winkworth.co.uk)

**Winkworth**

[winkworth.co.uk](http://winkworth.co.uk)

See things differently





## DESCRIPTION:

A stunning five-bedroom home, with tasteful period features and off-street parking, located in the heart of Victoria Park Village.

The ground floor of the property comprises of two receptions overlooking the patio area and a spacious kitchen diner, which also opens onto the patio, and an additional patio space following on from the driveway.

The property boasts five generous double bedrooms all featuring high ceilings and vast windows, allowing plenty of light throughout. The house offers the perfect opportunity for purchasers to add their own style and reconfiguration, having previously had planning in place for a basement.

London Fields & Victoria Park are within easy walking distance as well as being close to all the village amenities. The property also offers excellent transport links including Hackney Wick & Cambridge Heath Stations and a variety of bus routes into The City and the West End.

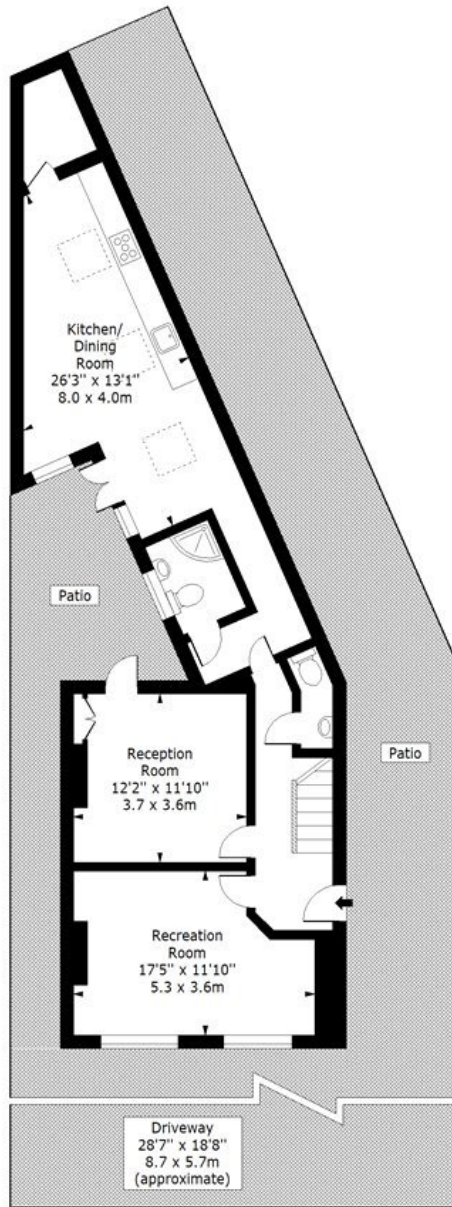
**Winkworth**



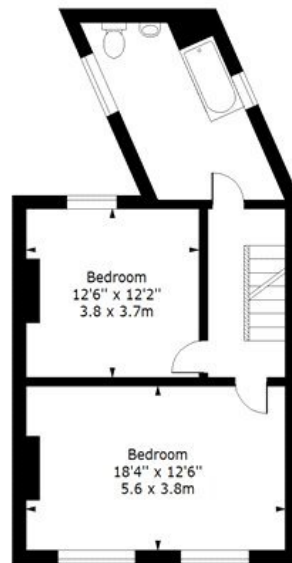


**Winkworth**

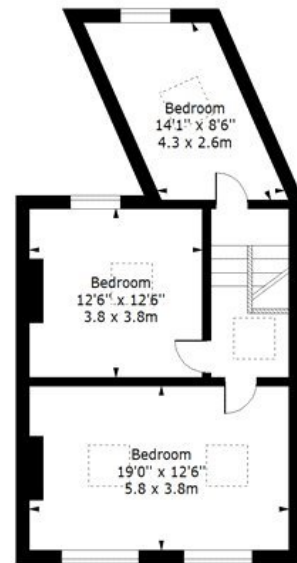
**Victoria Park Road, E9**  
 Approx. Gross Internal Area 20.32 Sq Ft - 188.77 Sq M



**Ground Floor**  
 Floor Area 864 Sq Ft - 80.27 Sq M



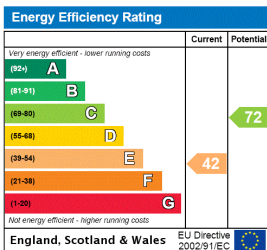
**First Floor**  
 Floor Area 584 Sq Ft - 54.25 Sq M



**Second Floor**  
 Floor Area 584 Sq Ft - 54.25 Sq M

For illustration Purposes Only - Not To Scale  
 www.ipaplus.com

This floorplan is for illustration purposes only and is not to scale. The position and size of doors, windows, appliances and other features are approximate.



Hackney | 020 8986 4216 | [hackney@winkworth.co.uk](mailto:hackney@winkworth.co.uk)



[winkworth.co.uk](http://winkworth.co.uk)

See things differently

Winkworth wishes to inform prospective buyers and tenants that these particulars are a guide and act as information only. All our details are given in good faith and believed to be correct at the time of printing but they don't form part of an offer or contract. No Winkworth employee has authority to make or give any representation or warranty in relation to this property. All fixtures and fittings, whether fitted or not are deemed removable by the vendor unless stated otherwise and room sizes are measured between internal wall surfaces, including furnishings.