



**BLOOMSBURY CLOSE, LONDON, W5**

**£425,000 SHARE OF FREEHOLD**

Lease: 957 Years Remaining on Underlying Lease

Ground Rent: Peppercorn

Service Charge: £1,584 per annum

*(Information Supplied by the Seller)*

Council Tax Band: C

EPC Band: C

Ealing & Acton | 0208 896 0123 | ealing@winkworth.co.uk

**Winkworth**

for every step...

[winkworth.co.uk](http://winkworth.co.uk)





### DESCRIPTION:

This charming two-bedroom purpose-built flat spans two levels and features a separate kitchen and a spacious reception room. Upstairs, you'll find two well-sized bedrooms and a well-appointed bathroom. This secure gated development further benefits from electric pedestrian and vehicle gates and CCTV.

Located in a desirable area, this flat offers easy access to local amenities and transport links. Ideal for professionals, couples, or small families, this split-level home combines style and convenience.

*\*Imagery : please note furniture has been superimposed into certain photos*



**Winkworth**

for every step...





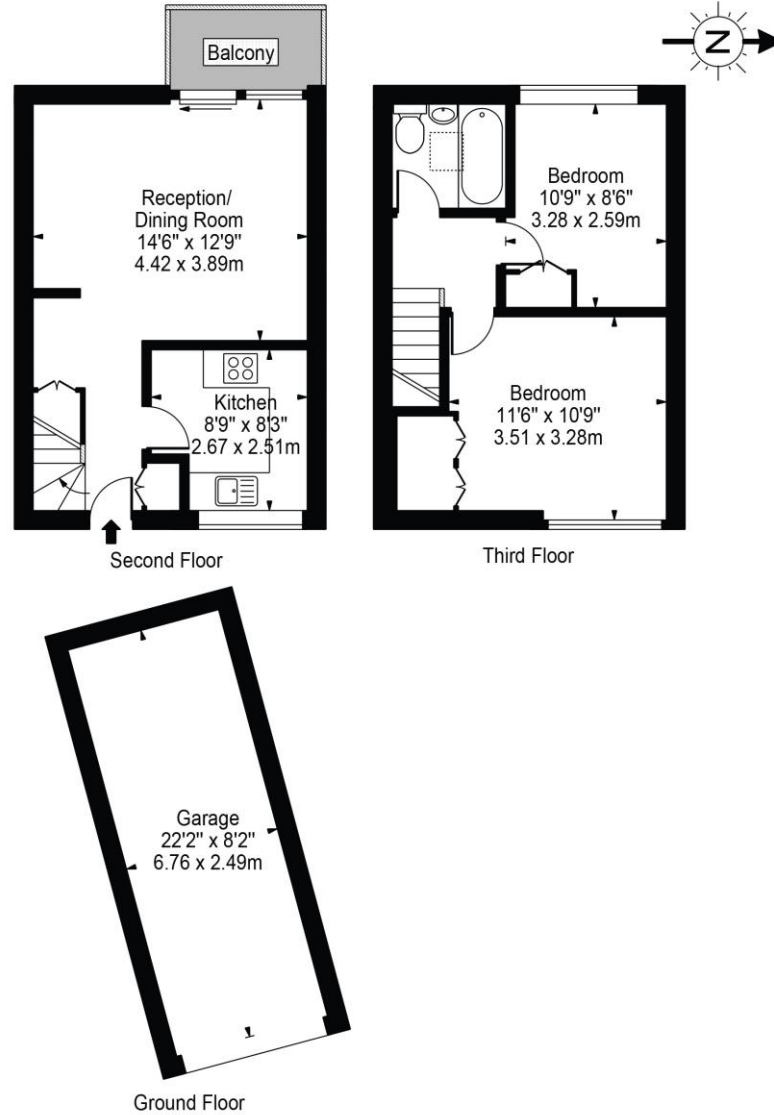
**Winkworth**

for every step...

# Bloomsbury Close, W5

Approx. Gross Internal Area 629 Sq Ft - 58.44 Sq M  
(Excluding Garage)

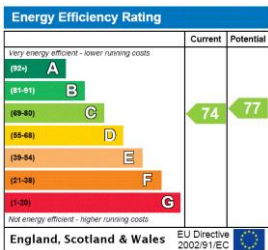
Approx. Gross Internal Area Of Garage 181 Sq Ft - 16.83 Sq M



For Illustration Purposes Only - Not To Scale Floor Plan by Mira Nikolova Photography

This floor plan should be used as a general outline for guidance only and does not constitute in whole or in part an offer or contract. Any intending purchaser or lessee should satisfy themselves by inspection, searches, enquiries and full survey as to the correctness of each statement. Any areas, measurements or distances quoted are approximate and should not be used to value a property or be the basis of any sale or let.

This floorplan is for illustration purposes only and is not to scale. The position and size of doors, windows, appliances and other features are approximate.



**Tenure:** Share of Freehold

**Council Tax Band:** C

Where no figures are shown, we have been unable to ascertain the information. All figures that are shown were correct at the time of printing.

Ealing & Acton | 0208 896 0123 | ealing@winkworth.co.uk



for every step...

winkworth.co.uk

Winkworth wishes to inform prospective buyers and tenants that these particulars are a guide and act as information only. All our details are given in good faith and believed to be correct at the time of printing but they don't form part of an offer or contract. No Winkworth employee has authority to make or give any representation or warranty in relation to this property. All fixtures and fittings, whether fitted or not are deemed removable by the vendor unless stated otherwise and room sizes are measured between internal wall surfaces, including furnishings.