



MITCHELL HOUSE, COLLEGE CROSS, LONDON, N1  
OIEO £350,000 LEASEHOLD

## A LOVELY STUDIO FLAT SITUATED ON A SOUGHT AFTER STREET IN BARNSBURY CLOSE TO UPPER STREET

Islington | 0207 354 2480 | [islington@winkworth.co.uk](mailto:islington@winkworth.co.uk)

**Winkworth**





## DESCRIPTION:

Located on popular College Cross in the heart of Barnsbury, moments from Upper Street with its abundance of amenities, this recently refurbished studio is close to excellent transport links, being equidistance to both Highbury & Islington and Angel stations and is immaculate throughout.

The flat comprises spacious double bedroom/living area, separate kitchen, a shower room and a communal garden.

Additional Information -

Lease Term: 104 years

Insurance = £167 pa

Service charge = £1,274 pa

Service charge review: Annually

Ground Rent: £10 pa

Ground rent review: Never

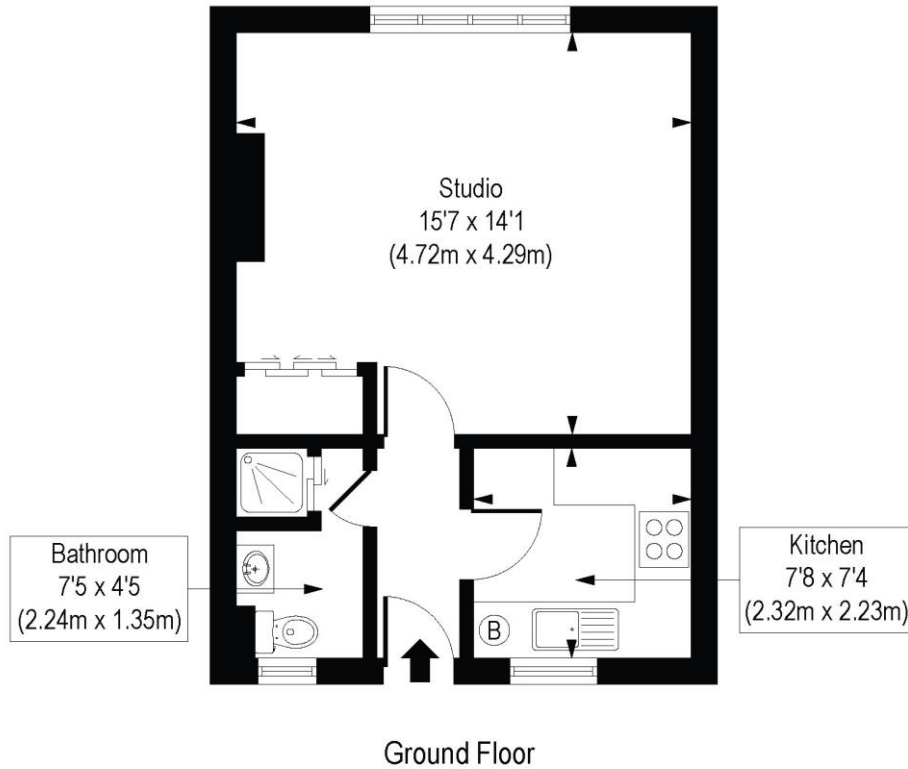
**Winkworth**





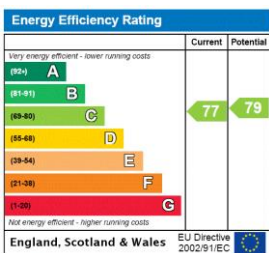
**Winkworth**

Mitchell House College Cross, N1  
 Approx. Gross Internal Floor Area 349 sq. ft / 32.40 sq. m



COMPLIANT WITH RICS CODE OF MEASURING PRACTICE. Floorplan is for illustrative purposes only and is not to scale. Every attempt has been made to ensure the accuracy of the floorplan shown, however all measurements, fixtures, fittings and data shown are an approximate interpretation for illustrative purposes only. Liability for errors, omissions or mis-statement through negligence or otherwise is hereby excluded.

This floorplan is for illustration purposes only and is not to scale. The position and size of doors, windows, appliances and other features are approximate.



Islington | 0207 354 2480 | islington@winkworth.co.uk



winkworth.co.uk

See things differently

Winkworth wishes to inform prospective buyers and tenants that these particulars are a guide and act as information only. All our details are given in good faith and believed to be correct at the time of printing but they don't form part of an offer or contract. No Winkworth employee has authority to make or give any representation or warranty in relation to this property. All fixtures and fittings, whether fitted or not are deemed removable by the vendor unless stated otherwise and room sizes are measured between internal wall surfaces, including furnishings.