



**ONE BEDROOM FLAT, SLOANE GARDENS, CHELSEA, SW1W  
£725,000 SHARE OF FREEHOLD**

**CHARMING APARTMENT IN A PRIME  
LOCATION. A RARE OPPORTUNITY TO OWN A  
PIECE OF HISTORY!**



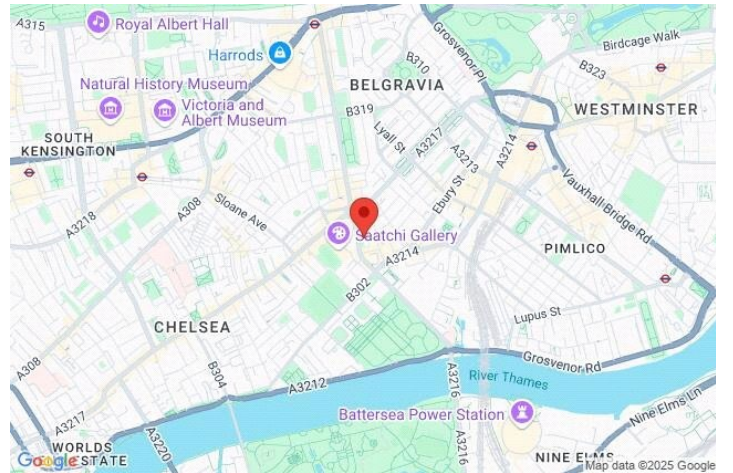


## DESCRIPTION:

Apartment with period charm. This lower ground flat boasts 1 bedroom and residents' parking. The property offers a unique living space. Don't miss out on this opportunity to own a piece of history in a prime location.



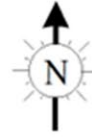




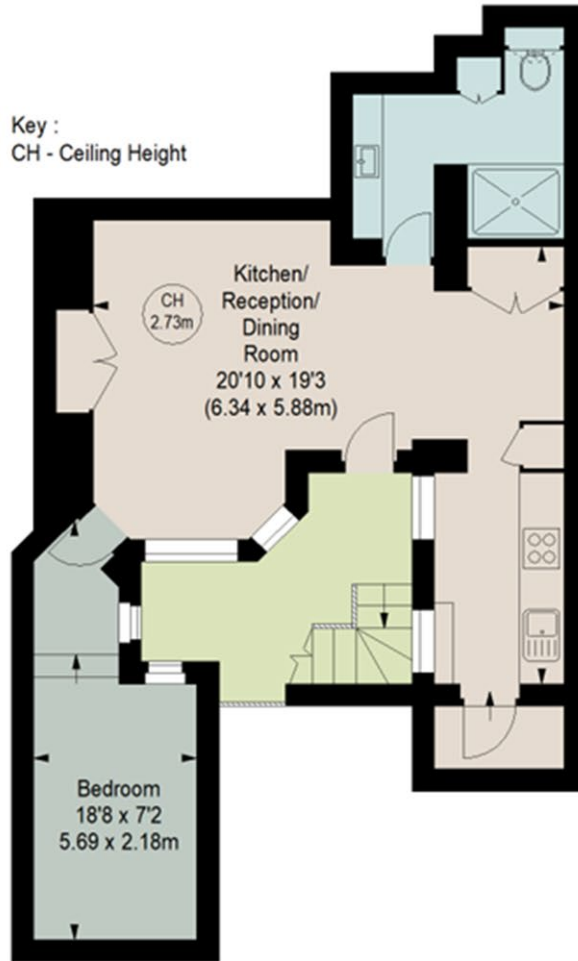
# SLOANE GARDENS, SW1W

Approximate gross internal area

517 sq ft / 48.03 sq m



Key :  
CH - Ceiling Height



## LOWER GROUND FLOOR

Although every attempt has been made to ensure accuracy, all measurements are approximate.  
This floorplan is for illustrative purposes only and not to scale.  
Measured in accordance with RICS standards.

This floorplan is for illustration purposes only and is not to scale. The position and size of doors, windows, appliances and other features are approximate.

Energy Efficiency Rating		Current	Potential
Very energy efficient - lower running costs			
(92-100)	A		
(81-91)	B		
(69-80)	C		
(55-68)	D	55	72
(39-54)	E		
(21-38)	F		
(1-20)	G		
Not energy efficient - higher running costs			
England, Scotland & Wales		EU Directive 2002/91/EC	

**Tenure:** Lease Hold

**Term:** 988 year and 9 months

**Service Charge:** £4,700 per annum

**Ground Rent:** Peppercorn

**Council Tax Band:** F

Where no figures are shown, we have been unable to ascertain the information. All figures that are shown were correct at the time of printing.