



FLAT 68, HAWFINCH HOUSE, MOORHEN DRIVE, LONDON, NW9
£450,000 LEASEHOLD

TWO BEDROOM, TWO BATHROOM APARTMENT IN HENDON WATERSIDE CHAIN FREE

Hendon | 020 8202 1031 | hendon@winkworth.co.uk

Winkworth

for every step...

winkworth.co.uk



DESCRIPTION: Discover this stunning two-bedroom, two-bathroom apartment on the 11th floor, showcasing breathtaking lake views and located in the prestigious Hendon Waterside development. Designed for modern living, this residence offers a sophisticated blend of style, comfort, and unparalleled convenience.

The apartment's open-plan layout is flooded with natural light, highlighting the seamless flow between the living, dining, and kitchen areas. Large windows frame the lake views, while a private balcony offers an ideal spot to take in the tranquil scenery. The primary bedroom includes an en-suite, complemented by a second spacious bedroom and additional bathroom.

Residents enjoy the convenience of a concierge service, ensuring a smooth, worry-free living experience. Hendon Waterside offers landscaped gardens, lakeside paths, and on-site amenities, along with easy access to transport, shopping, and dining.



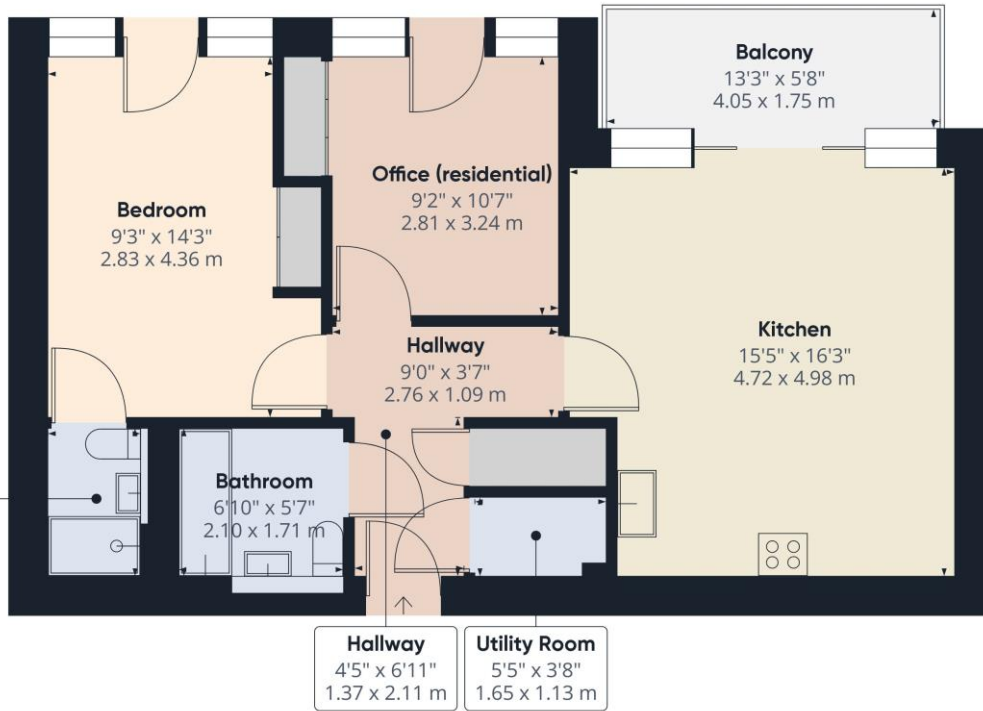
Winkworth

for every step...



Winkworth

for every step...



Approximate total area⁽¹⁾
672.85 ft²
62.51 m²

Balconies and terraces
75.67 ft²
7.03 m²

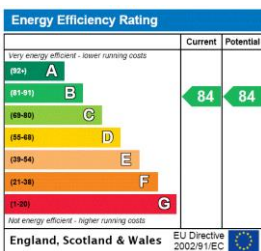
(1) Excluding balconies and terraces

While every attempt has been made to ensure accuracy, all measurements are approximate, not to scale. This floor plan is for illustrative purposes only.

Calculations are based on RICS IPMS 3C standard.

GIRAFFE360

This floorplan is for illustration purposes only and is not to scale. The position and size of doors, windows, appliances and other features are approximate.



Tenure: Leasehold

Term: 143 years and 0 months

Service Charge: £3,599.19 per annum

Ground Rent: £663 Annually (subject to increase)

Council Tax Band: D

Where no figures are shown, we have been unable to ascertain the information. All figures that were shown were correct at the time of printing.

Hendon | 020 8202 1031 | hendon@winkworth.co.uk

Winkworth

for every step...

winkworth.co.uk

Winkworth wishes to inform prospective buyers and tenants that these particulars are a guide and act as information only. All our details are given in good faith and believed to be correct at the time of printing but they don't form part of an offer or contract. No Winkworth employee has authority to make or give any representation or warranty in relation to this property. All fixtures and fittings, whether fitted or not are deemed removable by the vendor unless stated otherwise and room sizes are measured between internal wall surfaces, including furnishings.