



WEST GROVE, HERSHAM, WALTON-ON-THAMES, SURREY, KT12
£3,500 PER MONTH

FIVE BEDROOM HOUSE, CONVENIENTLY LOCATED FOR THE LOCAL AMENITIES AND TRAIN STATION

Weybridge | 01932 854400 | weybridge@winkworth.co.uk

Tenant Fees Apply: Details of fees for tenant referencing, tenancy agreement admin fees and renewal fees are available on the Winkworth website and the link can be found with the displayed rent for the property. Tenants should ensure they are fully conversant with these upfront fees and other costs that are involved at the outset of the tenancy before making an offer to rent and your local Winkworth office will provide written details upon request.

winkworth.co.uk



for every step...



DESCRIPTION:

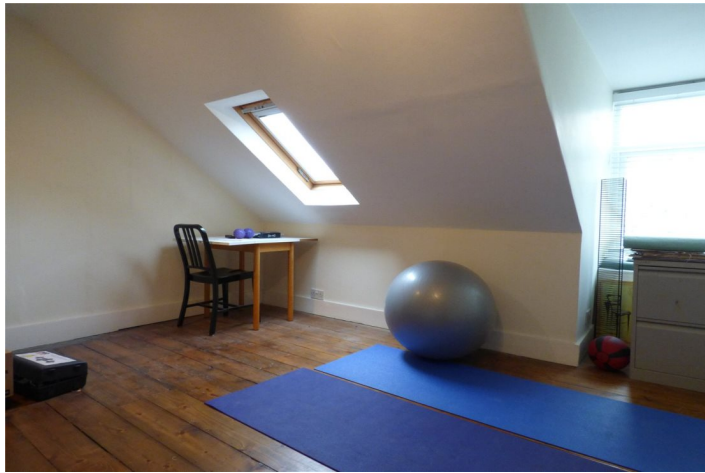
Conveniently located for the local amenities and train station, this large three storey house offers bundles of character and space.

The property benefits from off-street parking and a garage and has a medium sized, fully enclosed garden to the rear.

The ground floor has two reception rooms with a further kitchen/breakfast room with downstairs cloakroom and utility room. Upstairs there are 5 bedrooms and 2 bathrooms.

Winkworth

for every step...



Winkworth

for every step...



This floorplan is for illustration purposes only and is not to scale. The position and size of doors, windows, appliances and other features are approximate.

Energy Efficiency Rating	
	Potential
Very energy efficient - lower running costs	
(92-100) A	
(81-91) B	83
(69-80) C	
(55-68) D	60
(39-54) E	
(21-38) F	
(1-20) G	
Not energy efficient - higher running costs	
England, Scotland & Wales	EU Directive 2002/91/EC

Weybridge | 01932 854400 | weybridge@winkworth.co.uk



for every step...

winkworth.co.uk

Winkworth wishes to inform prospective buyers and tenants that these particulars are a guide and act as information only. All our details are given in good faith and believed to be correct at the time of printing but they don't form part of an offer or contract. No Winkworth employee has authority to make or give any representation or warranty in relation to this property. All fixtures and fittings, whether fitted or not are deemed removable by the vendor unless stated otherwise and room sizes are measured between internal wall surfaces, including furnishings.