



CROSSWAY, PINNER, MIDDLESEX, HA5
OFFERS OVER £500,000 FREEHOLD

THREE BEDROOM END OF TERRACE HOME IN A DESIRABLE LOCATION

Kingsbury | 020 8204 0000 | kingsbury@winkworth.co.uk

Winkworth

for every step...

winkworth.co.uk



DESCRIPTION: Located in the vibrant and ever popular Pinner, this well-three-bedroom end of terrace house presents an ideal family home. The ground floor hosts a comfortable lounge, a sleek modern kitchen, and a contemporary bathroom. Upstairs, there are three well-sized bedrooms offering versatile living spaces. Externally, the property boasts off-street parking and a well lovely private garden. With the added benefit of scope to extend (STPP), there's opportunity to further enhance and add value to this already appealing property. Perfectly positioned within the catchment area for some of the area's most regarded primary and secondary schools, and a short distance from Pinner's array of chic shopping and dining options. Excellent transport links are close by, including Pinner and Northwood Hills Stations (Metropolitan Line). A fantastic opportunity for homebuyers looking to settle in a desirable part of town.



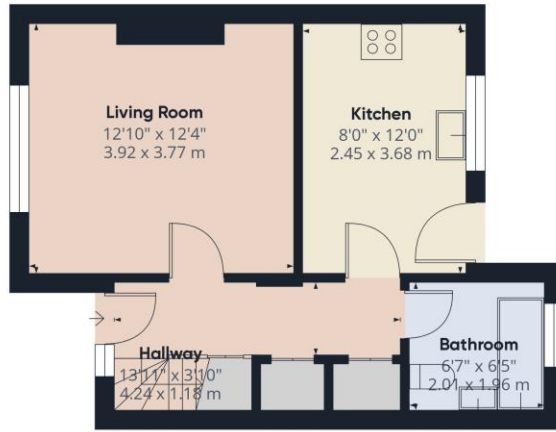
Winkworth

for every step...



Winkworth

for every step...



Ground Floor



Floor 1

Approximate total area⁽¹⁾
695.68 ft²
64.63 m²

(1) Excluding balconies and terraces

Reduced headroom
..... Below 5 ft/1.5 m

While every attempt has been made to ensure accuracy, all measurements are approximate, not to scale. This floor plan is for illustrative purposes only.
Calculations are based on RICS IPMS 3C standard.

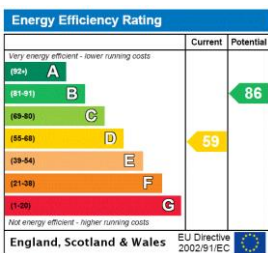
GIRAFFE360

This floorplan is for illustration purposes only and is not to scale. The position and size of doors, windows, appliances and other features are approximate.

Tenure: Freehold

Council Tax Band: D - Harrow

Where no figures are shown, we have been unable to ascertain the information. All figures that are shown were correct at the time of printing.



Kingsbury | 020 8204 0000 | kingsbury@winkworth.co.uk