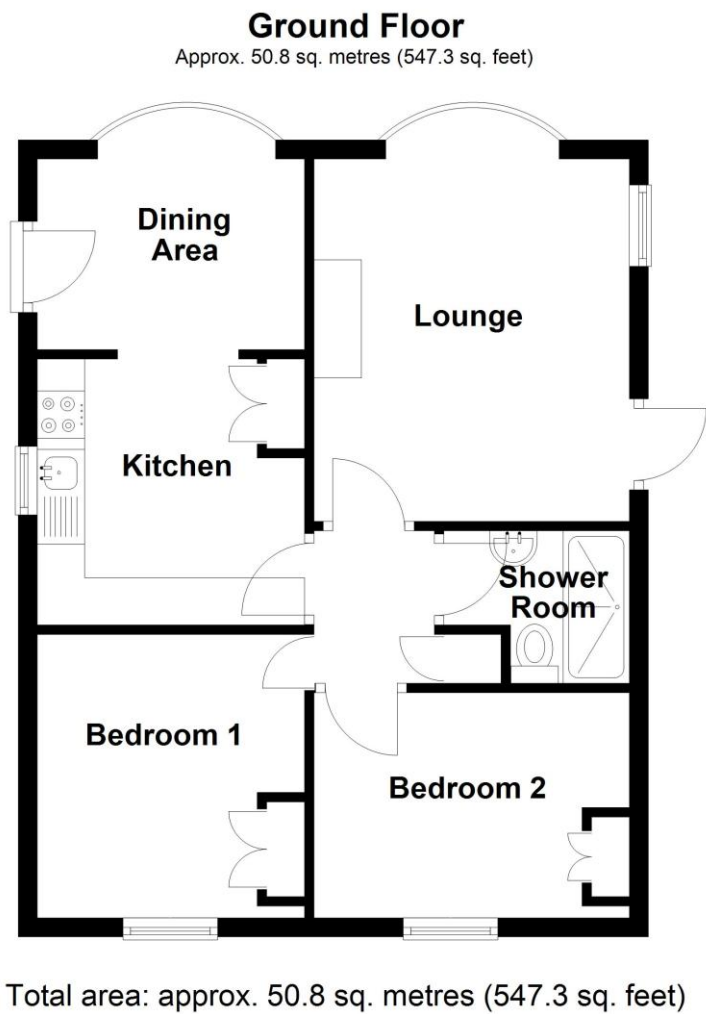


The Orchards Park, Ruskington,
Sleaford

This floorplan is for illustration purposes only and is not to scale. The position and size of doors, windows, appliances and other features are approximate.



53 The Orchards Park, Ruskington, Sleaford, Lincolnshire, NG34 9DH

£89,950 Leasehold

Tucked-Away Two-Bedroom Park Home on Generous Corner Plot – NO ONWARD CHAIN

Two Bedroom Park Home | Private Position Corner Plot | Exclusive Over 50's Development | Popular Village with Fantastic Amenities | No Onward Chain

Winkworth

Winkworth Sleaford | 01529 303377 | sleaford@winkworth.co.uk

winkworth.co.uk/sleaford

See things differently.

Under the Property Misdescriptions Act 1991 these particulars are a guide and act as information only. All details are given in good faith and are believed to be correct at time of printing. Winkworth give no representation as to their accuracy and potential purchasers or tenants must satisfy themselves or otherwise as to their correctness. No employee of Winkworth has authority to make or give any representation or warranty in relation to this property.

Winkworth

See things differently.

DESCRIPTION

We're pleased to bring to market this well-presented two-bedroom park home, offered with no onward chain and quietly positioned in a private corner plot on the ever-popular Orchards Park in Ruskington – an exclusive development for the over 50s.

Set on one of the larger plots within the park, this home enjoys a peaceful wraparound garden that offers both privacy and outdoor space, perfect for pottering, relaxing, or entertaining in warmer months.

Internally, the property comprises an Entrance Hall, a bright and airy Lounge/Diner with a separate dining room off the kitchen, a well-appointed Kitchen, two double bedrooms, and a separate Shower Room. Additional features include uPVC double glazing and excellent potential to personalise to your taste.

This is a rare opportunity to secure a lovely, low-maintenance home in a secluded and tranquil position with all the benefits of a friendly and well-maintained community.

For further details or to arrange a viewing, call today – this won't stay on the market for long!

ACCOMMODATION

Lounge - 12'7" x 10'10" (3.84m x 3.3m)

Dining Room - 6'8" x 8'2" (2.03m x 2.5m)

Kitchen - 9'3" x 8'2" (2.82m x 2.5m)

Shower Room - 6'5" x 5'3" (1.96m x 1.6m)

Bedroom 1 - 9'9" x 9'5" (2.97m x 2.87m)

Bedroom 2 - 9'5" x 7' (2.87m x 2.13m)

LOCAL AUTHORITY

North Kesteven District Council

TENURE

Leasehold

COUNCIL TAX BAND

A

