







A beautifully presented first floor flat forming part of this attractive period building in Southfields. Sold with a Share of the Freehold, this fantastic property benefits from a lovely reception room with feature fireplace, separate fitted kitchen with exposed brick wall. Two double bedrooms are serviced by a modern bathroom. To the rear is a large shared garden. Sold with no onward chain.

Wimbledon Park Road is superbly located close to the variety of shops, bars and restaurants in Southfields. The nearest station is Southfields Underground Station (District Line) which offers swift access to central London, with excellent bus links also nearby. Numerous green spaces are also within easy reach with King George's Park and Wimbledon Park close by.

- Period Flat
- First Floor
- Spacious Reception Room
- Two Bedrooms
- Modern Bathroom
- Shared Garden
- No Onward Chain



# Wimbledon Park Road, Southfields, SW18 5SJ



## Share of Freehold

Internal area

Approximate gross internal area:

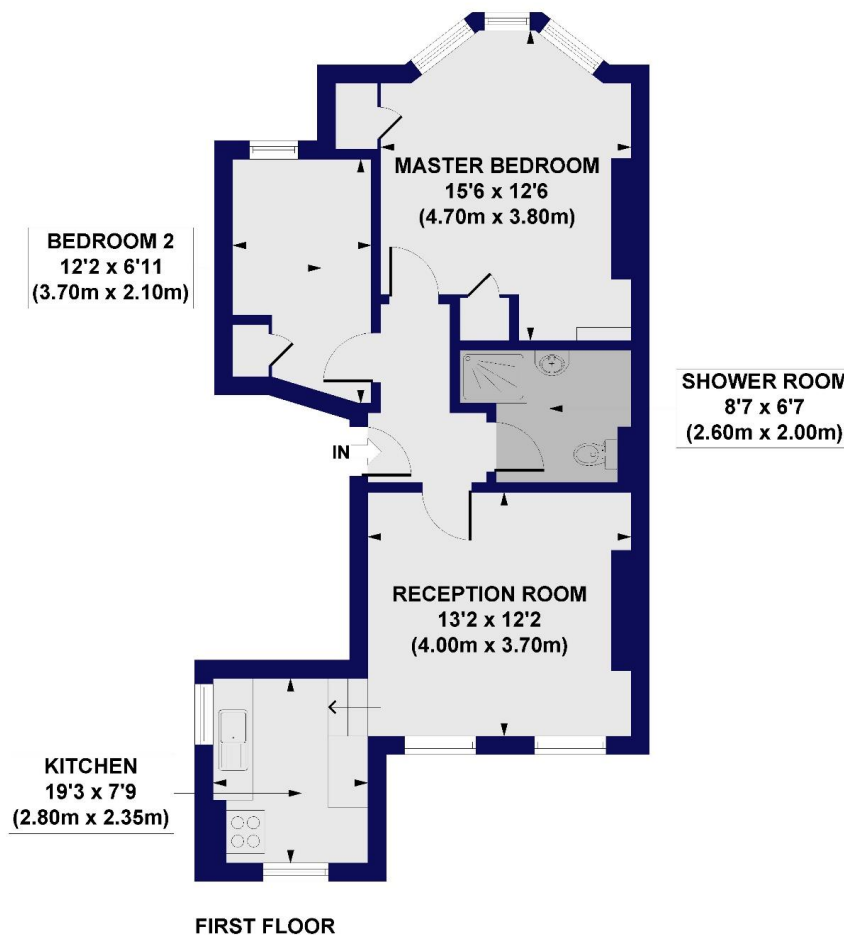
**Total 596 sq ft / 55.34 sq m**

Service Charge: approx.. £1,800 p.a

Council Tax Band : D

Wimbledon Park Road, SW18

Approx. Gross Internal Floor Area 596 sq. ft / 55.34 sq. m



All measurements of walls, doors, windows, fittings and appliances, including their size and location, are shown as standard sizes and do not constitute any warranty or representation by the seller, their agent or CP Creative. Any intending purchaser must satisfy himself by inspection or otherwise as to the correctness of the information contained in these plans. This plan is for illustrative purposes only and should be used as such by any prospective purchasers.

**Winkworth**

W621 Ravensworth 01670 713330

**Winkworth**

Under the Property Misdescriptions Act these particulars are intended as a guide and act as information only. They give a fair overall description for the guidance of potential purchasers or tenants but do not constitute an offer or part of a contract. All details and approximate measurements are given in good faith and are believed to be correct at the time of printing, but any potential purchasers or tenants should not rely on the mis-statements or representations of fact but must satisfy themselves by inspection or otherwise as to their correctness. No employee of Winkworth has authority to make or give any representation or warranty to this property.

Southfields office 241 Wimbledon Park Road, London SW18 5RJ | Tel: 0208 877 1000 | E-mail: Southfields@winkworth.co.uk  
[winkworth.co.uk](http://winkworth.co.uk)