



LAWRIE COURT, HARROW, MIDDLESEX, HA3
£340,000 LEASEHOLD APPROX 135 YEARS REMAINING

TWO BEDROOM GROUND FLOOR FLAT

- SERVICE CHARGE APPROX £1,527 PER ANNUM
- GROUND RENT APPROX £25 PER ANNUM

Kingsbury | 020 8204 0000 | kingsbury@winkworth.co.uk

Winkworth

for every step...

winkworth.co.uk



DESCRIPTION: This lovely two-bedroom ground-floor flat is ideally situated in a sought-after location, offering easy access to the amenities of both Stanmore and Harrow. The property boasts two well-proportioned bedrooms, providing comfortable living spaces for residents. The inviting lounge is perfect for relaxing, while the practical kitchen is well-equipped for daily use. The position of the shower room adds convenience to the home. Externally, the property features a private garden area, offering a peaceful outdoor retreat. With its excellent location and cozy atmosphere, this flat is a perfect choice for those seeking a blend of comfort and convenience. An internal viewing is advised.



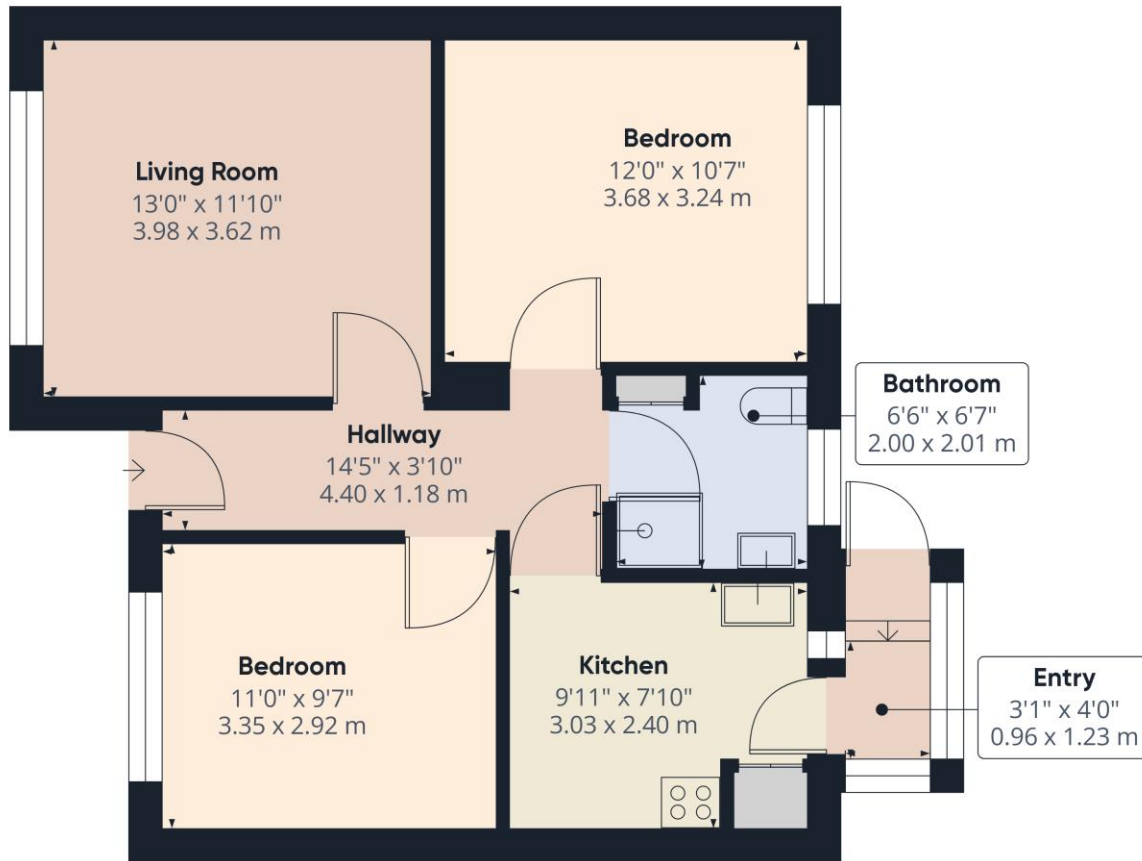
Winkworth

for every step...



Winkworth

for every step...



Approximate total area⁽¹⁾
599.77 ft²
55.72 m²

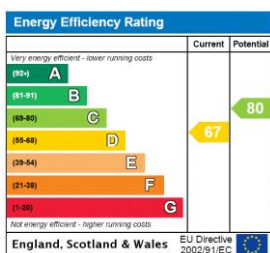
(1) Excluding balconies and terraces

While every attempt has been made to ensure accuracy, all measurements are approximate, not to scale. This floor plan is for illustrative purposes only.

Calculations are based on RICS IPMS 3C standard.

GIRAFFE360

This floorplan is for illustration purposes only and is not to scale. The position and size of doors, windows, appliances and other features are approximate.



Tenure: Leasehold

Term: 135 year and 7 months

Service Charge: £1527 per annum

Ground Rent: £ 25 Annually (subject to increase)

Council Tax Band: C

Where no figures are shown, we have been unable to ascertain the information. All figures that are shown were correct at the time of printing.