



HIGHWOOD COURT, LONDON, NW10
£2,500 PER MONTH PART FURNISHED

A MEWS HOUSE SET WITHIN A GATED COMMUNITY

Kensal Rise & Queens Park | 0208 960 4947 | kensalrise@winkworth.co.uk

Winkworth

for every step...

winkworth.co.uk



DESCRIPTION:

Set within a gated community this three bedroom mews house is set over three floors. With two bedrooms on the ground floor and a family bathroom, a spacious living room on the middle floor which links well with the kitchen and further master bedroom with en-suite and a private balcony. This rare opportunity offered to the lettings market part furnished and in a great condition.

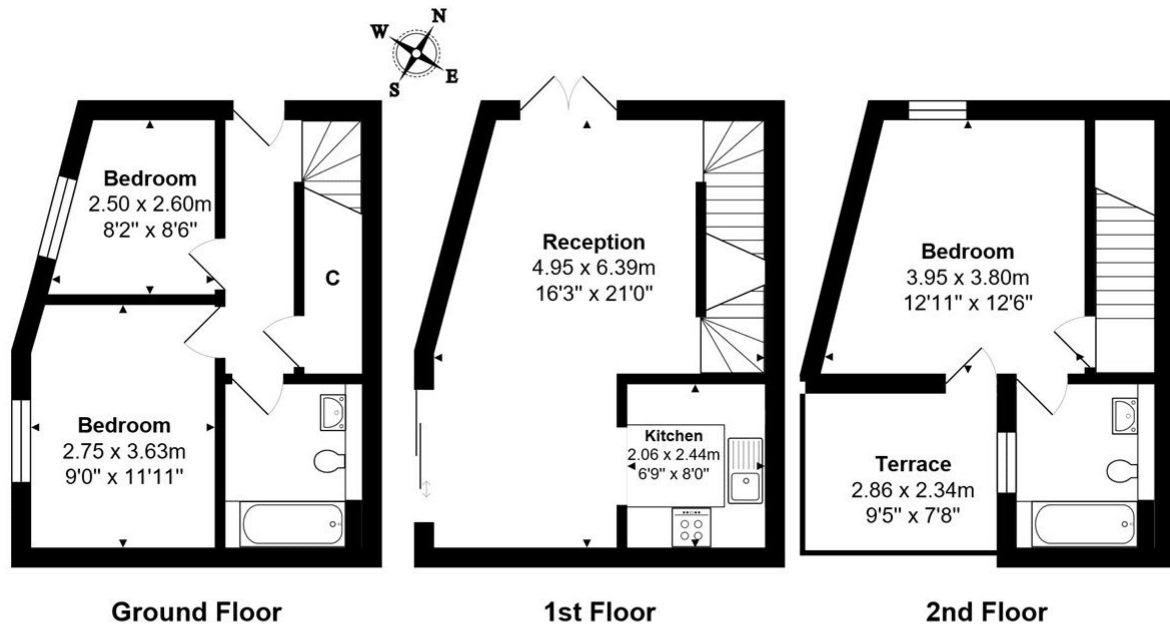
NO PETS IN THE MEWS DEVELOPMENT UNFORTUNATELY

Council tax - (Band D)

Ward - Kensal Green

Managed By Winkworth





Total Area: 82.9 m² ... 892 ft² (excluding terrace)
 All measurements are approximate and for display purposes only

This floorplan is for illustration purposes only and is not to scale. The position and size of doors, windows, appliances and other features are approximate.

Energy Efficiency Rating		Current	Potential
Very energy efficient - lower running costs			
(92-100)	A		
(81-91)	B		
(69-80)	C		
(55-68)	D	65	65
(39-54)	E		
(21-38)	F		
(1-20)	G		
Not energy efficient - higher running costs			
England, Scotland & Wales		EU Directive 2002/91/EC	

Deposit: 5 weeks rent

Holding Deposit: 1 weeks rent

Council Tax Band: D

Where no figures are shown, we have been unable to ascertain the information. All figures that are shown were correct at the time of printing.



Kensal Rise & Queens Park | 0208 960 4947 | kensalrise@winkworth.co.uk

for every step...

winkworth.co.uk

Winkworth wishes to inform prospective buyers and tenants that these particulars are a guide and act as information only. All our details are given in good faith and believed to be correct at the time of printing but they don't form part of an offer or contract. No Winkworth employee has authority to make or give any representation or warranty in relation to this property. All fixtures and fittings, whether fitted or not are deemed removable by the vendor unless stated otherwise and room sizes are measured between internal wall surfaces, including furnishings.