



GREYSWOOD STREET, LONDON, SW16
£550,000 LEASEHOLD

AN IMMACULATLY PRESENTED TWO DOUBLE BEDROOM FIRST FLOOR FLAT

Tooting | 020 8767 5221 | tooting@winkworth.co.uk

Winkworth

for every step...

winkworth.co.uk



DESCRIPTION:

This beautifully presented two-bedroom split-level flat features a bright, open-plan kitchen and reception area with large windows, an original Victorian fireplace, wooden flooring, and a contemporary kitchen. The property also boasts two spacious and bright double bedrooms, both with wooden floors and built-in storage, along with a modern bathroom and a separate WC.

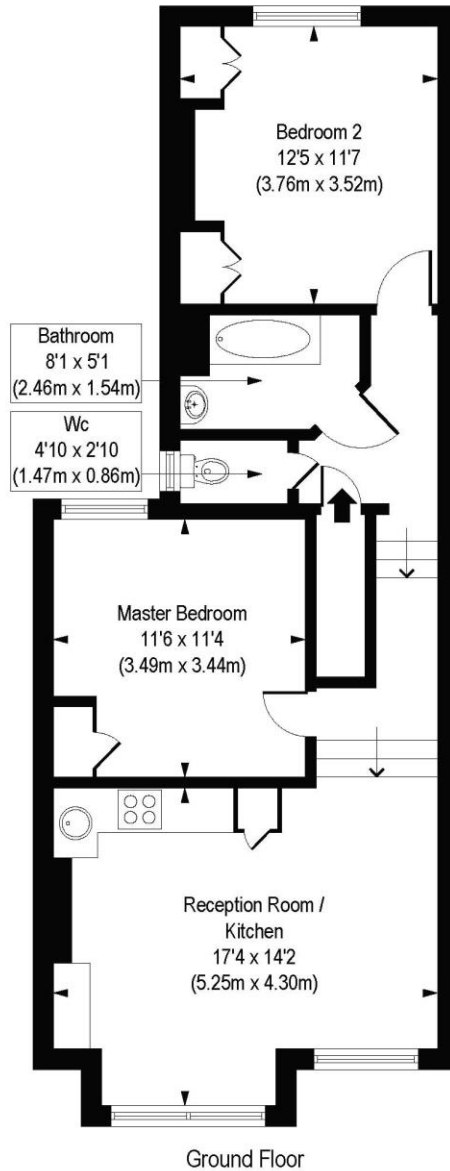
Situated on Greyswood Street in the desirable Furzedown area, this flat benefits from easy access to a range of local amenities on Moyser Road and Tooting High Road. Transport links include Tooting Train Station (0.8 miles), Tooting Bec Underground Station (Northern Line, 1.1 miles), Streatham Common Station (offering direct services to London Bridge, Victoria, and Clapham Junction), and Streatham Overground Station (0.8 miles, providing Thameslink services). The property is also within walking distance of reputable primary and secondary schools.

Wandsworth Council Tax Band: C



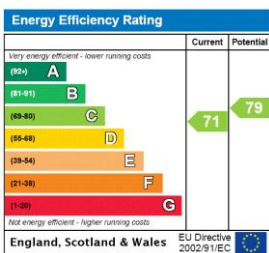
Greyswood Street, SW16

Approx. Gross Internal Floor Area 652 sq. ft / 60.57 sq. m



COMPLIANT WITH RICS CODE OF MEASURING PRACTICE. Floorplan is for illustrative purposes only and is not to scale. Every attempt has been made to ensure the accuracy of the floorplan shown, however all measurements, fixtures, fittings and data shown are an approximate interpretation for illustrative purposes only. Liability for errors, omissions or mis-statement through negligence or otherwise is hereby excluded.

This floorplan is for illustration purposes only and is not to scale. The position and size of doors, windows, appliances and other features are approximate.



for every step...

Tooting | 020 8767 5221 | tooting@winkworth.co.uk

winkworth.co.uk

Winkworth wishes to inform prospective buyers and tenants that these particulars are a guide and act as information only. All our details are given in good faith and believed to be correct at the time of printing but they don't form part of an offer or contract. No Winkworth employee has authority to make or give any representation or warranty in relation to this property. All fixtures and fittings, whether fitted or not are deemed removable by the vendor unless stated otherwise and room sizes are measured between internal wall surfaces, including furnishings.