



## Elvaston Place, South Kensington, London, SW7

£400 per week\* / £1,733.33 per month – Furnished

A well-proportioned one bedroom flat at this ever popular South Kensington address.

1 Bedroom | 1 Reception Room | 1 Bathroom | Lower Ground Floor | 497 Approx sq ft | EPC: D

APPLICANT FEES MAY BE APPLICABLE  
HOLDING DEPOSIT OF 1 WEEK'S RENT  
SECURITY DEPOSIT OF 5 WEEKS' RENT

**Winkworth**

[winkworth.co.uk](http://winkworth.co.uk)

for every step...

## DESCRIPTION


With a private entrance on the lower ground floor and wooden floors throughout, accommodation is comprised of one bedroom with built-in wardrobes, bathroom, a good-sized south-facing reception/studio room and a separate kitchen. The property offers very flexible living/storage options, and is ideally located for the transport links, shops, schools and universities in the area. The property is available from mid-August on a furnished basis.

## ACCOMMODATION

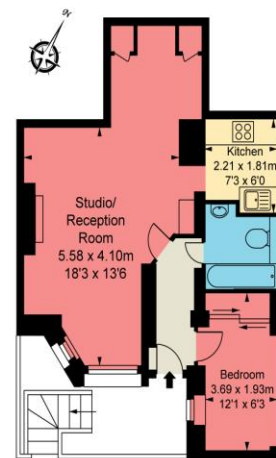
1 Bedroom, 1 Reception Room,  
1 Bathroom, Lower Ground Floor,  
Furnished, 497 Approx Sq ft

## COUNCIL TAX BAND

Band E

Energy Efficiency Rating		
	Current	Potential
Very energy efficient - lower running costs		
(92+) <b>A</b>		
(81-91) <b>B</b>		
(69-80) <b>C</b>		
(55-68) <b>D</b>	<b>67</b>	<b>67</b>
(39-54) <b>E</b>		
(21-38) <b>F</b>		
(1-20) <b>G</b>		
Not energy efficient - higher running costs		
England, Scotland & Wales	EU Directive 2002/91/EC	

Eivaston Place, SW7  
Approximate Gross Internal Area  
497 sq ft / 46.16 sq m



Lower Ground Floor

ILLUSTRATION FOR IDENTIFICATION PURPOSES ONLY  
ALL MEASUREMENTS ARE MAXIMUM AND INCLUDE WINDOW BAYS AND WARDROBES WHERE APPLICABLE  
THIS PLAN MUST NOT BE REPRODUCED BY ANY OTHER PERSON WITHOUT PERMISSION.

*This floorplan is for illustration purposes only and is not to scale. The position and size of doors, windows, appliances and other features are approximate.*

*\*Please note, rent cannot be paid on a weekly basis*

South Kensington Lettings | 020 7370 6767 | [lettings.southken@winkworth.co.uk](mailto:lettings.southken@winkworth.co.uk)

[winkworth.co.uk](http://winkworth.co.uk)



for every step...

Winkworth wishes to inform prospective buyers and tenants that these particulars are a guide and act as information only. All our details are given in good faith and believed to be correct at the time of printing but they don't form part of an offer or contract. No Winkworth employee has authority to make or give any representation or warranty in relation to this property. All fixtures and fittings, whether fitted or not are deemed removable by the vendor unless stated otherwise and room sizes are measured between internal wall surfaces, including furnishings.