



VICTORIA CRESCENT, SE19
£1,950 PER MONTH UNFURNISHED

NEWLY REFURBISHED TWO BEDROOM FLAT FOR RENT

Crystal Palace | 02038693222 | crystalpalace@winkworth.co.uk

Winkworth

for every step...

winkworth.co.uk



DESCRIPTION:

Winkworth is pleased to offer this newly refurbished two-bedroom ground floor flat available to rent on Victoria Crescent.

Located on the ground floor the property comprises entrance hallway, larger than average main bedroom with bay window allowing for an abundance of natural light and fitted wardrobes, second bedroom which would work well as a home office, nursery or walk in wardrobe, modern bathroom suite, reception room and separate fitted shaker kitchen.

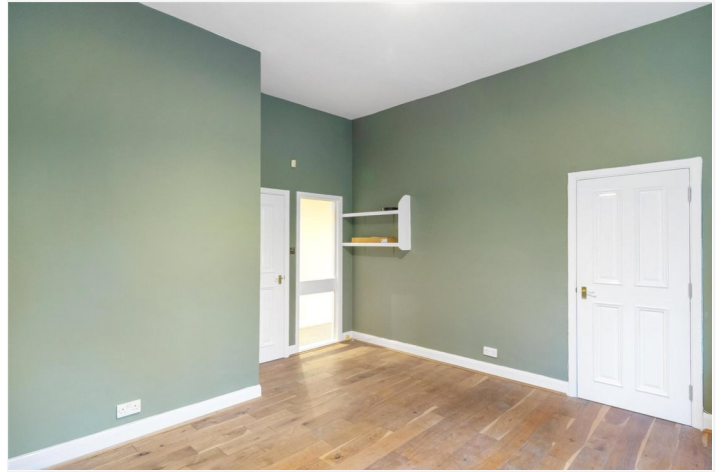
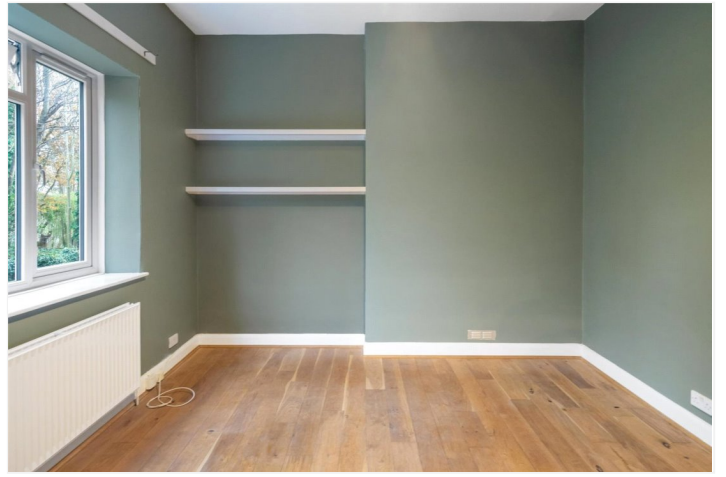
The property has been completely refurbished throughout to a modern standard, benefits from high ceilings and access to a well-maintained communal garden.

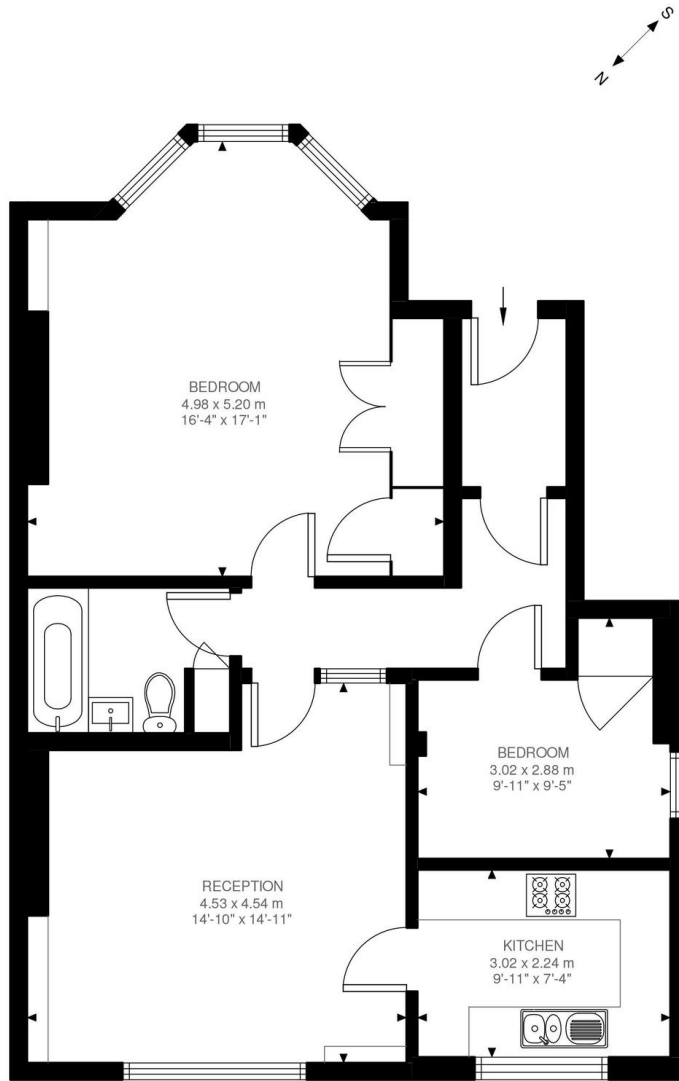
Offered unfurnished & available immediately.

AT A GLANCE

- Two bedrooms
- Ground floor
- Newly refurbished throughout
- Unfurnished
- Available now
- Holding Deposit: £450.00 (1 weeks rent)
- Deposit: £2,250.00 (5 weeks rent)
- Lambeth Council Tax Band C: £1,658.14pa







Ground Floor
771 ft²

Victoria Crescent, SE19
Approximate Gross Internal Area
71.62 SQ.M / 771 SQ.FT

Illustration for identification purposes only. Not to scale.
Floor Plan Drawn According To RICS Guidelines.

This floorplan is for illustration purposes only and is not to scale. The position and size of doors, windows, appliances and other features are approximate.

Deposit: £0.00

Holding Deposit:

Council Tax Band:

Where no figures are shown, we have been unable to ascertain the information. All figures that are shown were correct at the time of printing.

Energy Efficiency Rating		Current	Potential
Most energy efficient - lower running costs			
(92-100)	A		
(81-91)	B		
(69-80)	C	75	83
(55-68)	D		
(39-54)	E		
(21-38)	F		
(1-20)	G		
Not energy efficient - higher running costs			
England, Scotland & Wales		EU Directive 2002/91/EC	

Crystal Palace | 02038693222 | crystalpalace@winkworth.co.uk

Winkworth

for every step...

winkworth.co.uk

Winkworth wishes to inform prospective buyers and tenants that these particulars are a guide and act as information only. All our details are given in good faith and believed to be correct at the time of printing but they don't form part of an offer or contract. No Winkworth employee has authority to make or give any representation or warranty in relation to this property. All fixtures and fittings, whether fitted or not are deemed removable by the vendor unless stated otherwise and room sizes are measured between internal wall surfaces, including furnishings.