



## Cornwall Gardens, South Kensington, London, SW7

£775 per week\* / £3,358.33 per month – Furnished

A spacious, well-presented two double bedroom flat with private entrance, patio and access to communal gardens.

2 Bedrooms | 1 Reception Room | 2 Bathrooms | Lower Ground Floor | Patio | Communal Gardens |  
Approx 1,006 sq ft | EPC: D

APPLICANT FEES MAY BE APPLICABLE  
HOLDING DEPOSIT OF 1 WEEK'S RENT  
SECURITY DEPOSIT OF 5 WEEKS' RENT

**Winkworth**

[winkworth.co.uk](http://winkworth.co.uk)

for every step...



## DESCRIPTION

Stretching to 1,006 sq ft (93.5 sq m), the property features a large open-plan kitchen/reception room, two double bedrooms, two bathrooms (one en-suite) and private patio accessed via the bedrooms. The flat further benefits from high ceilings, wooden floors throughout, and access to communal gardens (by separate arrangement). Located on the Lower Ground floor, the apartment is ideally situated at the preferred Western end of one of South Kensington's finest Garden Squares, moments from Gloucester Road station. The property is available from the end of March on a furnished basis.





## ACCOMMODATION

2 Bedrooms, 1 Reception Room,  
2 Bathrooms, Lower Ground Floor, Patio,  
Communal Gardens, Furnished,  
1,006 Approx Sq ft

## COUNCIL TAX BAND

Band E



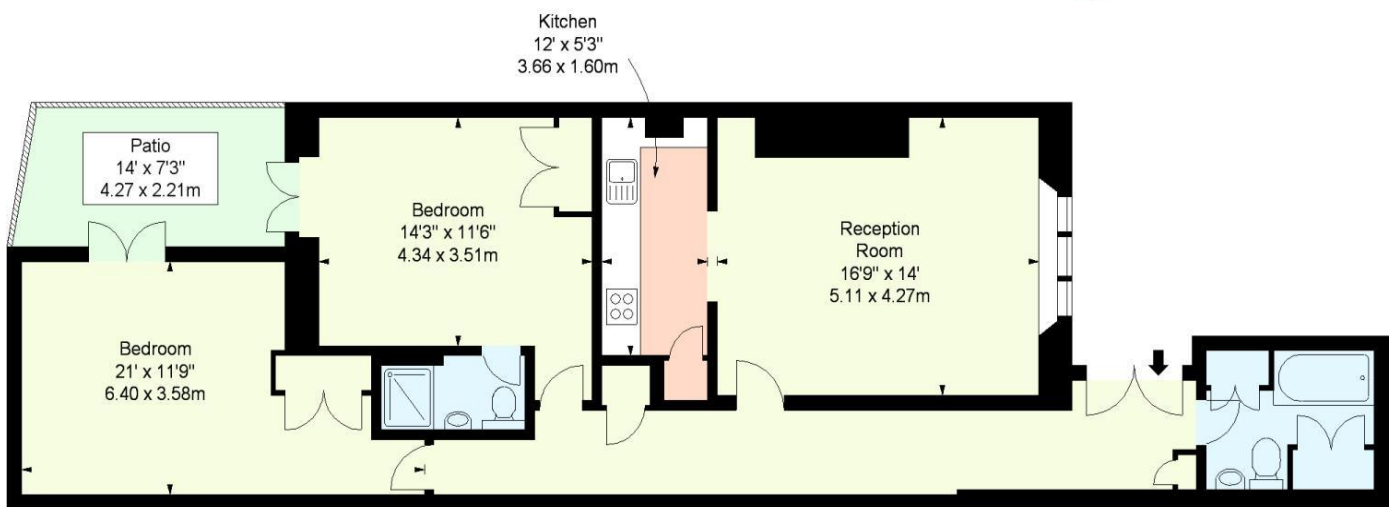
Energy Efficiency Rating		
	Current	Potential
Very energy efficient - lower running costs		
(92+) <b>A</b>		
(81-91) <b>B</b>		80
(69-80) <b>C</b>		
(55-68) <b>D</b>	62	
(39-54) <b>E</b>		
(21-38) <b>F</b>		
(1-20) <b>G</b>		
Not energy efficient - higher running costs		
England, Scotland & Wales	EU Directive 2002/91/EC	



## CORNWALL GARDENS, SW7

APPROX. GROSS INTERNAL AREA \*  
1006 Ft<sup>2</sup> - 93.45 M<sup>2</sup>

ILLUSTRATION FOR IDENTIFICATION PURPOSES ONLY. NOT TO SCALE  
\* As Defined by RICS - Code of Measuring Practice



LOWER GROUND FLOOR

**BKR**

www.bkrfloorplans.co.uk  
T: 0845 257 2023  
© BKR 2004

*This floorplan is for illustration purposes only and is not to scale. The position and size of doors, windows, appliances and other features are approximate.*

*\*Please note, the rent cannot be paid on a weekly basis*

South Kensington Lettings | 020 7370 6767 | [lettings.southken@winkworth.co.uk](mailto:lettings.southken@winkworth.co.uk)

**Winkworth**

[winkworth.co.uk](http://winkworth.co.uk)

**for every step...**

Winkworth wishes to inform prospective buyers and tenants that these particulars are a guide and act as information only. All our details are given in good faith and believed to be correct at the time of printing but they don't form part of an offer or contract. No Winkworth employee has authority to make or give any representation or warranty in relation to this property. All fixtures and fittings, whether fitted or not are deemed removable by the vendor unless stated otherwise and room sizes are measured between internal wall surfaces, including furnishings.