



**RIVERSIDE HOUSE, READING, BERKSHIRE, RG1 6BH
£1,550 PER MONTH FURNISHED**

**TWO BEDROOM 4TH FLOOR RIVERSIDE
APARTMENT. AVAILABLE NOW. FURNISHED.**

Reading | 0118 4022 300 | reading@winkworth.co.uk

Winkworth

for every step...

winkworth.co.uk



DESCRIPTION:

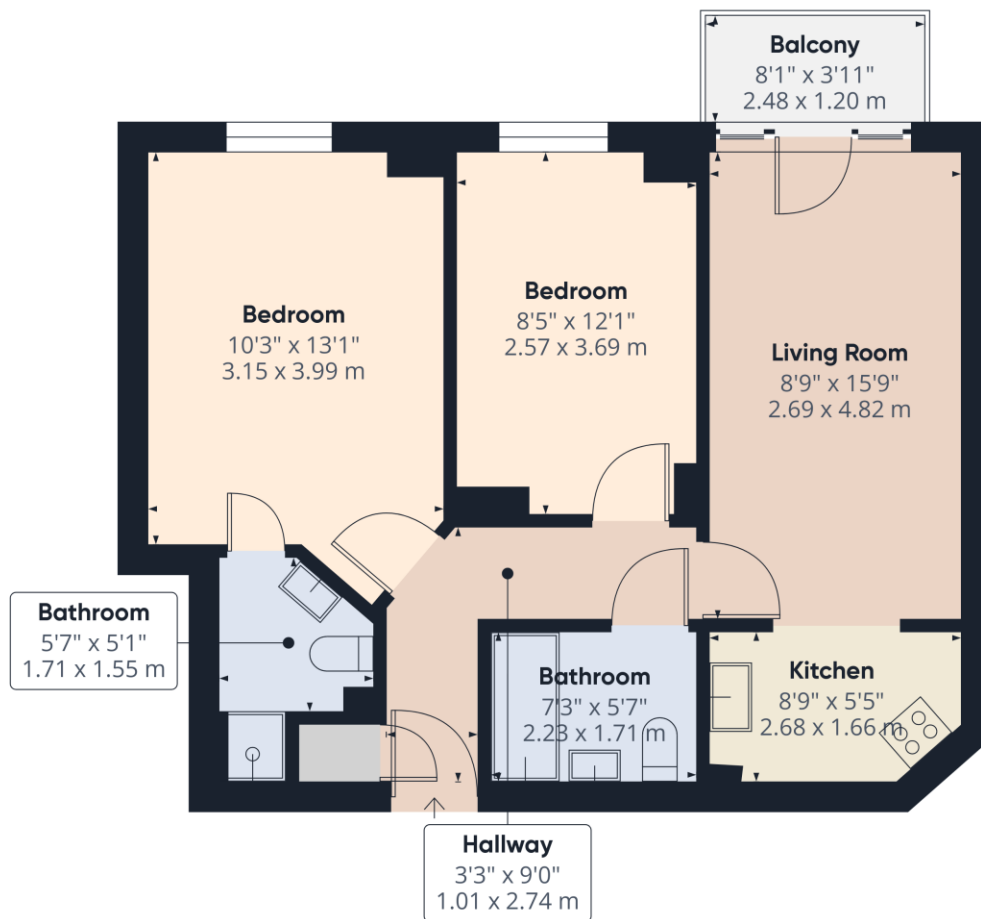
A fourth floor town centre apartment in an excellent location opposite the Oracle shopping and entertainment complex and a short walk to Reading Station. This well presented apartment comprises; two double bedrooms, the master with an en suite shower, a three piece bathroom, a fitted kitchen and open plan living/dining room with a balcony. Available now. Furnished.

AT A GLANCE

- Two bedroom apartment
- 4th floor
- Open Plan Living Room
- Council tax band D
- Two Bathrooms
- Balcony
- NO PARKING
- Furnished
- Available now







Approximate total area⁽¹⁾
 561.22 ft²
 52.14 m²

Balconies and terraces
 31.75 ft²
 2.95 m²

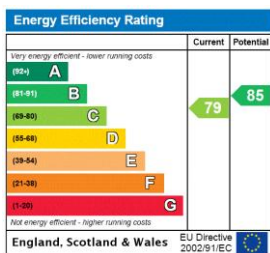
(1) Excluding balconies and terraces

While every attempt has been made to ensure accuracy, all measurements are approximate, not to scale. This floor plan is for illustrative purposes only.

Calculations are based on RICS IPMS 3C standard.

GIRAFFE360

This floorplan is for illustration purposes only and is not to scale. The position and size of doors, windows, appliances and other features are approximate.



Deposit: £1788.46

Holding Deposit: £357.69

Council Tax Band: D

Where no figures are shown, we have been unable to ascertain the information. All figures that are shown were correct at the time of printing.

Reading | 0118 4022 300 | reading@winkworth.co.uk



for every step...

winkworth.co.uk

Winkworth wishes to inform prospective buyers and tenants that these particulars are a guide and act as information only. All our details are given in good faith and believed to be correct at the time of printing but they don't form part of an offer or contract. No Winkworth employee has authority to make or give any representation or warranty in relation to this property. All fixtures and fittings, whether fitted or not are deemed removable by the vendor unless stated otherwise and room sizes are measured between internal wall surfaces, including furnishings.