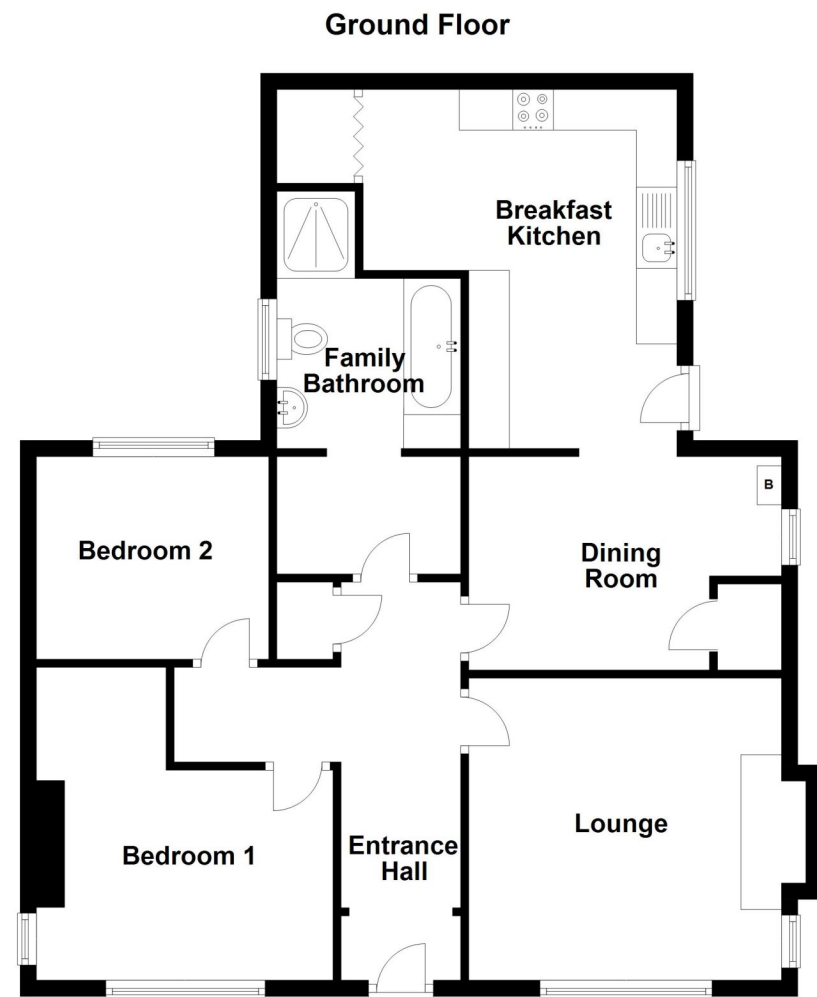


EPC TO FILE



33 Main Street, Kirkby Green, Lincoln, Lincolnshire, LN4 3PE

£230,000 Freehold

NO CHAIN Situated in the idyllic and serene village of Kirkby Green, is this stunning 1930's Two Bedroom Detached Bungalow. The property boasts a corner plot with stunning wrap around gardens and ample off street parking. The gardens are a real credit to the current owners, being principally laid to lawn with numerous well established, plants, fruit trees and various shrubs, sheds, a greenhouse and summer house, perfect for enjoying the afternoon sun. Just a short walk from the property is endless countryside walks to enjoy.

Detached 1930's Bungalow | Idyllic Village | Serene Countryside Walks | Fantastic Corner Plot | Spacious Kitchen | Two Double Bedrooms | Stylish Family Bathroom | Oil Fired Central Heating | UPVC Double Glazing | Ample Off Road Parking | Detached Garage | No Onward Chain



ACCOMMODATION

Entrance Hall

Lounge - 12'9" x 11'11" (3.89m x 3.63m)

Dining Room - 12'9" x 7'8" (3.89m x 2.34m)

Kitchen - 14'6" x 16'2" (4.42m x 4.93m)

Bedroom One - 12' x 12' (3.66m x 3.66m)

Bedroom Two - 9'5" x 8' (2.87m x 2.44m)

Family Bathroom - 7'2" x 7'4" (2.18m x 2.24m)

Garage

LOCAL AUTHORITY

North Kesteven District Council

TENURE

Freehold

COUNCIL TAX BAND

B

