



LONDON ROAD, BENFLEET, ESSEX, SS7
£1,100 PER MONTH UNFURNISHED

DECEPTIVELY LARGE ONE BEDROOM THIRD FLOOR FLAT

Leigh On Sea | 01702 470625 | leighonsea@winkworth.co.uk

Winkworth

for every step...

winkworth.co.uk



DESCRIPTION:

Winkworth are delighted to offer to let within this new development a luxury this larger than average one bedroom third floor apartment situated in the centre of Hadleigh. The property includes one allocated parking space, good quality integrated appliances including fridge freezer, washer dryer, dishwasher and oven/hob and large balcony off the lounge/diner. Providing easy access to both Leigh and Benfleet C2C trainlines, bus routes and the A127, this apartment provides comfortable living for commuters.

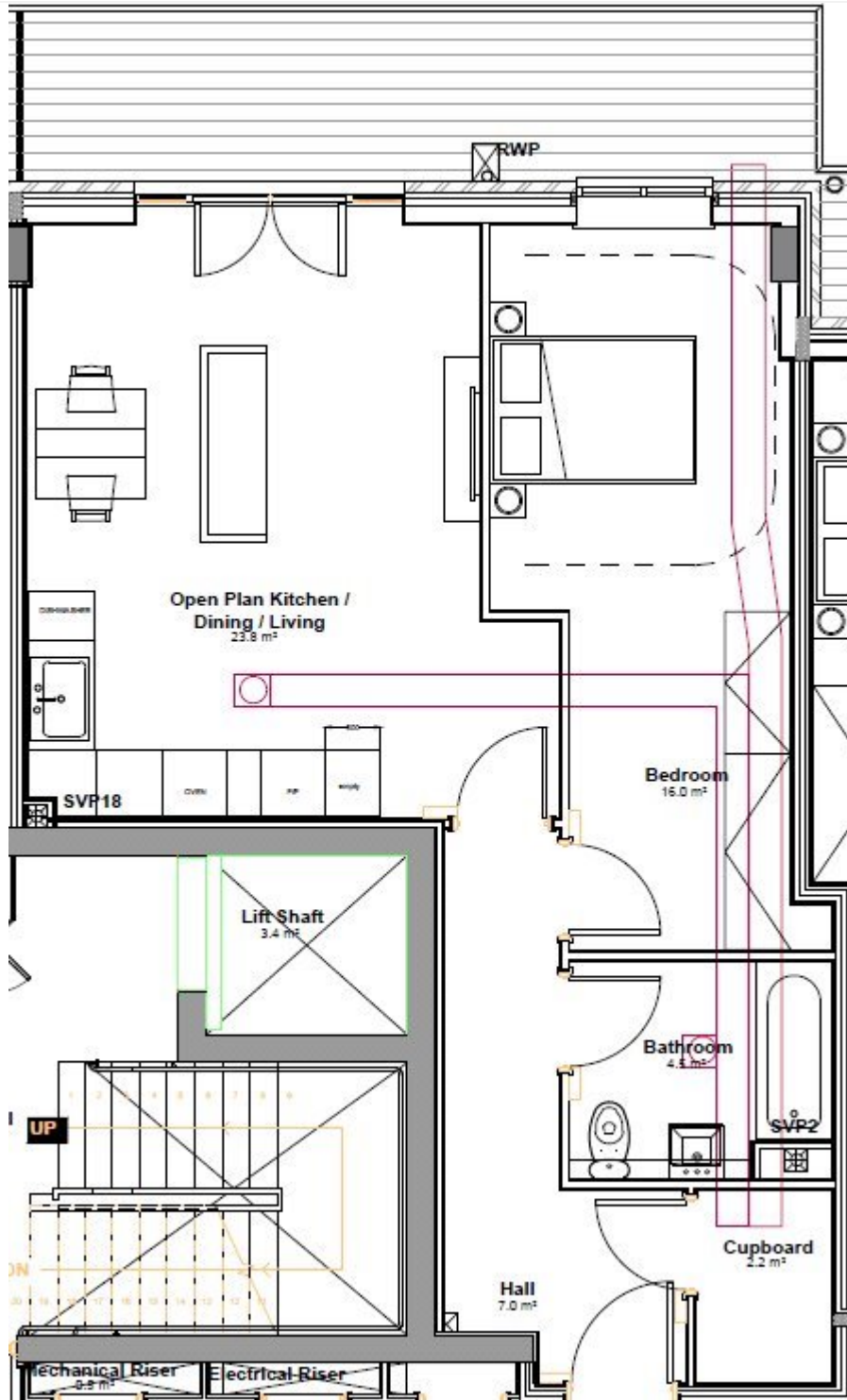
Finished to an exceptional standard the apartments benefit from stunning fully fitted kitchens with quartz worktops, bespoke bathrooms, high quality video entry phone system, resident's car park with electronic security gates, lift to all floors, solar powered infrared ceiling panel heaters that provide energy efficient, discreet heating.

Council Tax Band B – Castle Point Council. EPC rating B. No pets or smokers. Available 18th December.

ACCOMMODATION

Minimum term 6 months, 1 Bedrooms, 1 Reception Rooms, 1 Bathrooms, Flat/Apartment, Upper Floor with Lift, Balcony, Off Street Parking, Modern, Town/City, Purpose Built, Unfurnished





This floorplan is for illustration purposes only and is not to scale. The position and size of doors, windows, appliances and other features are approximate.

Energy Efficiency Rating		Current	Potential
Very energy efficient - lower running costs			
(92)	A	91	91
(81-91)	B		
(69-80)	C		
(55-68)	D		
(39-54)	E		
(21-38)	F		
(1-20)	G		
Not energy efficient - higher running costs			
England, Scotland & Wales		EU Directive 2002/91/EC	

Leigh On Sea | 01702 470625 | leighonsea@winkworth.co.uk



for every step...

winkworth.co.uk

Winkworth wishes to inform prospective buyers and tenants that these particulars are a guide and act as information only. All our details are given in good faith and believed to be correct at the time of printing but they don't form part of an offer or contract. No Winkworth employee has authority to make or give any representation or warranty in relation to this property. All fixtures and fittings, whether fitted or not are deemed removable by the vendor unless stated otherwise and room sizes are measured between internal wall surfaces, including furnishings.